

For Research Use Only

WFS1 Monoclonal antibody

Catalog Number: 67291-1-Ig



Basic Information

Catalog Number:

67291-1-Ig

Concentration:

1500 ug/ml

Source:

Mouse

Isotype:

IgG1

Immunogen Catalog Number:

AG25735

GenBank Accession Number:

BC030130

GeneID (NCBI):

7466

UNIPROT ID:

O76024

Full Name:

Wolfram syndrome 1 (wolframin)

Calculated MW:

890 aa, 100 kDa

Observed MW:

100 kDa

Purification Method:

Protein G purification

CloneNo.:

4C2B5

Recommended Dilutions:

WB 1:1000-1:5000

Applications

Tested Applications:

WB, ELISA

Species Specificity:

human, mouse, rat, pig

Positive Controls:

WB : HeLa cells, SH-SY5Y cells, A172 cells, HT-29 cells, HEK-293 cells, C6 cells, U-251 cells, PC-12 cells, Neuro-2a cells, SW480 cells, HepG2 cells

Background Information

Wolfram syndrome protein (WFS1), also called wolframin, is a transmembrane protein, which is located primarily in the endoplasmic reticulum and its expression is induced in response to ER stress, partially through transcriptional activation. ER localization suggests that WFS1 protein has physiological functions in membrane trafficking, secretion, processing and/or regulation of ER calcium homeostasis. It is ubiquitously expressed with highest levels in brain, pancreas, heart, and insulinoma beta-cell lines. Mutations of the WFS1 gene are responsible for two hereditary diseases, autosomal recessive Wolfram syndrome and autosomal dominant low frequency sensorineural hearing loss.

Storage

Storage:

Store at -20°C. Stable for one year after shipment.

Storage Buffer:

PBS with 0.02% sodium azide and 50% glycerol, pH7.3

Aliquoting is unnecessary for -20°C storage

For technical support and original validation data for this product please contact:

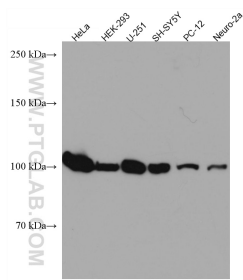
T: 4006900926

E: Proteintech-CN@ptglab.com

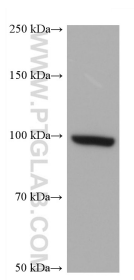
W: ptgcn.com

This product is exclusively available under Proteintech Group brand and is not available to purchase from any other manufacturer.

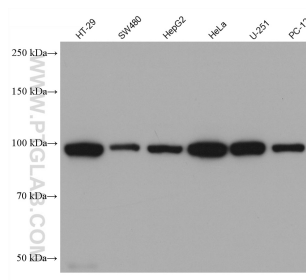
Selected Validation Data



Various lysates were subjected to SDS PAGE followed by western blot with 67291-1-Ig (WFS1 antibody) at dilution of 1:3000 incubated at room temperature for 1.5 hours.



A172 cells were subjected to SDS PAGE followed by western blot with 67291-1-Ig (WFS1 antibody) at dilution of 1:5000 incubated at room temperature for 1.5 hours.



Various lysates were subjected to SDS PAGE followed by western blot with 67291-1-Ig (WFS1 antibody) at dilution of 1:5000 incubated at room temperature for 1.5 hours.