

For Research Use Only

Rat Ins1 Monoclonal antibody, PBS Only



Catalog Number: 67284-1-PBS

Basic Information

Catalog Number:

67284-1-PBS

Size:

1 mg/ml

Source:

Mouse

Isotype:

IgG2a

Immunogen Catalog Number:

AG28809

GenBank Accession Number:

NM_019129.3

GeneID (NCBI):

24505

UNIPROT ID:

P01322

Full Name:

insulin 1

Calculated MW:

12 kDa

Purification Method:

Protein A purification

CloneNo.:

3A11C1

Applications

Tested Applications:

Indirect ELISA, IHC, IF

Species Specificity:

Rat, mouse

Background Information

Storage

Storage:

Store at -80°C.

The product is shipped with ice packs. Upon receipt, store it immediately at -80°C

Storage Buffer:

PBS Only

For technical support and original validation data for this product please contact:

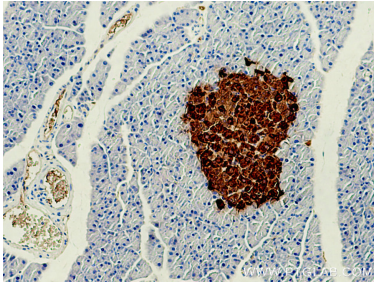
T: 4006900926

E: Proteintech-CN@ptglab.com

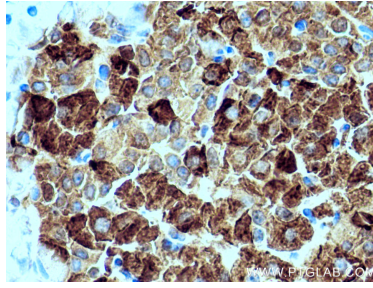
W: ptgcn.com

This product is exclusively available under Proteintech Group brand and is not available to purchase from any other manufacturer.

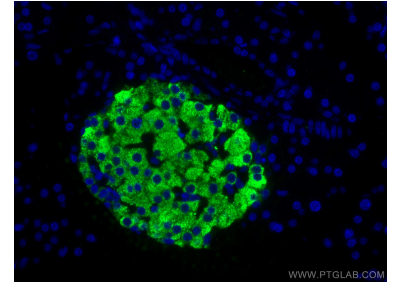
Selected Validation Data



Immunohistochemical analysis of paraffin-embedded rat pancreas tissue slide using 67284-1-Ig (Insulin1 antibody) at dilution of 1:10000 (under 10x lens). Heat mediated antigen retrieval with Tris-EDTA buffer (pH 9.0). This data was developed using the same antibody clone with 67284-1-PBS in a different storage buffer formulation.



Immunohistochemical analysis of paraffin-embedded rat pancreas tissue slide using 67284-1-Ig (Insulin1 antibody) at dilution of 1:10000 (under 40x lens). Heat mediated antigen retrieval with Tris-EDTA buffer (pH 9.0). This data was developed using the same antibody clone with 67284-1-PBS in a different storage buffer formulation.



Immunofluorescent analysis of (4% PFA) fixed rat pancreas tissue using Ins1 antibody (67284-1-Ig, Clone: 3A11C1) at dilution of 1:200 and CoraLite®488-Conjugated AffiniPure Goat Anti-Mouse IgG(H+L). This data was developed using the same antibody clone with 67284-1-PBS in a different storage buffer formulation.