

Ins1 Monoclonal antibody

Catalog Number: 67284-1-Ig

Basic Information

Catalog Number:

67284-1-Ig

Size:

1500 µg/ml

Source:

Mouse

Isotype:

IgG2a

Immunogen Catalog Number:

AG28809

GenBank Accession Number:

NM_019129.3

GeneID (NCBI):

24505

UNIPROT ID:

P01322

Full Name:

insulin 1

Calculated MW:

12 kDa

Purification Method:

Protein A purification

CloneNo.:

3A11C1

Recommended Dilutions:

IHC 1:5000-1:10000

IF-P 1:50-1:500

Applications

Tested Applications:

IF-P, IHC, ELISA

Species Specificity:

Rat, mouse

**Note-IHC: suggested antigen retrieval with
TE buffer pH 9.0; (*) Alternatively, antigen
retrieval may be performed with citrate
buffer pH 6.0**

Positive Controls:

IHC : rat pancreas tissue, mouse pancreas tissue

IF-P : rat pancreas tissue,

Background Information

Storage

Storage:

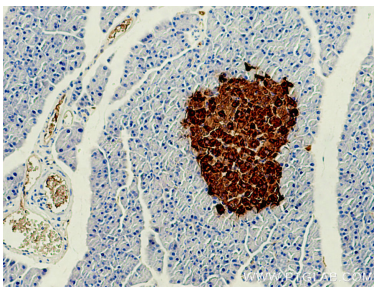
Store at -20°C.

Storage Buffer:

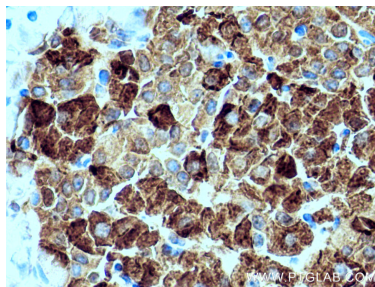
PBS with 0.02% sodium azide and 50% glycerol pH 7.3.

Aliquoting is unnecessary for -20°C storage

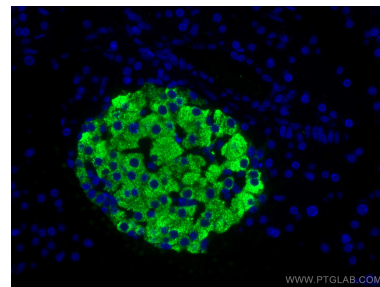
Selected Validation Data



Immunohistochemical analysis of paraffin-embedded rat pancreas tissue slide using 67284-1-Ig (Insulin1 antibody) at dilution of 1:10000 (under 10x lens). Heat mediated antigen retrieval with Tris-EDTA buffer (pH 9.0).



Immunohistochemical analysis of paraffin-embedded rat pancreas tissue slide using 67284-1-Ig (Insulin1 antibody) at dilution of 1:10000 (under 40x lens). Heat mediated antigen retrieval with Tris-EDTA buffer (pH 9.0).



Immunofluorescent analysis of (4% PFA) fixed rat pancreas tissue using Ins1 antibody (67284-1-Ig, Clone: 3A11C1) at dilution of 1:200 and CoraLite®488-Conjugated AffiniPure Goat Anti-Mouse IgG(H+L).