

## NEDD4L Monoclonal antibody

Catalog Number: 67276-1-Ig 2 Publications

## Basic Information

Catalog Number:

67276-1-Ig

Concentration:

1500 µg/ml

Source:

Mouse

Isotype:

IgG1

Immunogen Catalog Number:

AG4565

GenBank Accession Number:

BC032597

GeneID (NCBI):

23327

UNIPROT ID:

Q96PU5

Full Name:

neural precursor cell expressed,  
developmentally down-regulated 4-  
like

Calculated MW:

854 aa, 96 kDa

Observed MW:

112 kDa, 125 kDa

Purification Method:

Protein G purification

CloneNo.:

2F6H6

Recommended Dilutions:

WB 1:3000-1:10000

IF/ICC 1:1500-1:6000

## Applications

Tested Applications:

WB, IF/ICC, ELISA

Cited Applications:

WB, ColP

Species Specificity:

Human, Mouse, Rat

Cited Species:

human

Positive Controls:

WB: Jurkat cells, HSC-T6 cells, NIH/3T3 cells, 4T1 cells

IF/ICC: PC-3 cells, Jurkat cells

## Background Information

NEDD4L(E3 ubiquitin-protein ligase NEDD4-like) is also named as KIAA0439, NEDL3, Nedd4-2. It accepts ubiquitin from an E2 ubiquitin-conjugating enzyme in the form of a thioester and then directly transfers the ubiquitin to targeted substrates and is the principal ubiquitin ligase that selectively targets activated SMAD2 and SMAD3 for destruction (PMID:19917253). Nedd4L binds the PY motif of ENaC COOH terminals and catalyzes ubiquitination of the NH2 terminus of the protein for subsequent degradation (PMID:18268134). It has some isoforms produced by alternative splicing. This antibody may have cross reaction with NEDD4 due to the high homology of the antigen.

## Notable Publications

Author	Pubmed ID	Journal	Application
Guozhu Chen	39775116	Cell Biol Toxicol	WB
Guozhu Chen	39260747	Biochim Biophys Acta Mol Cell Res	WB, ColP

## Storage

Storage:

Store at -20°C. Stable for one year after shipment.

Storage Buffer:

PBS with 0.02% sodium azide and 50% glycerol pH 7.3.

Aliquoting is unnecessary for -20°C storage

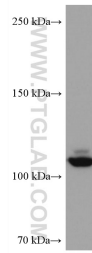
For technical support and original validation data for this product please contact:

T: 4006900926

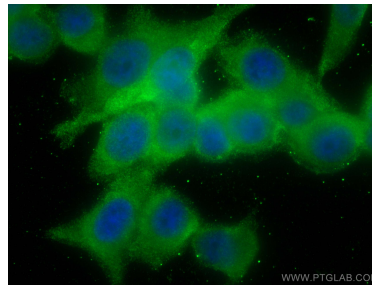
E: [Proteintech-CN@ptglab.com](mailto:Proteintech-CN@ptglab.com)W: [ptgcn.com](http://ptgcn.com)

This product is exclusively available under Proteintech Group brand and is not available to purchase from any other manufacturer.

## Selected Validation Data



Jurkat cells were subjected to SDS PAGE followed by western blot with 67276-1-Ig (NEDD4L antibody) at dilution of 1:10000 incubated at room temperature for 1.5 hours.



Immunofluorescent analysis of (-20°C Methanol) fixed PC-3 cells using NEDD4L antibody (67276-1-Ig, Clone: 2F6H6 ) at dilution of 1:3000 and CoraLite®488-Conjugated Goat Anti-Mouse IgG(H+L).