

# Biglycan Monoclonal antibody, PBS Only

Catalog Number: 67275-1-PBS

## Basic Information

Catalog Number: 67275-1-PBS	GenBank Accession Number: BC004244	Purification Method: Protein A purification
Size: 1mg/ml	GeneID (NCBI): 633	CloneNo.: 1E3F2
Source: Mouse	UNIPROT ID: P21810	
Isotype: IgG2a	Full Name: biglycan	
Immunogen Catalog Number: AG8012	Calculated MW: 42 kDa	
	Observed MW: 48 kDa	

## Applications

**Tested Applications:**  
Indirect ELISA, IHC, WB

**Species Specificity:**  
pig, mouse, human

## Background Information

Biglycan is a member of the small leucine-rich proteoglycan (SLRP) family (PMID: 18463092). It consists of a core protein of 42 kDa containing leucine-rich repeats (LRRs), to which two chondroitin/dermatan sulfate side chains are covalently bound (PMID: 2212616; 10383378). The tissue-specific chondroitin- or dermatan-sulfate glycosaminoglycan chains of biglycan are attached to amino acid residues at the N-terminus of the core protein (PMID: 22821552). Biglycan is a ubiquitous component of connective tissue matrix and may act as a signaling molecule (PMID: 22821552). Upregulation of biglycan has been reported in multiple types of solid cancer (PMID: 32194659).

## Storage

**Storage:**  
Store at -80°C.  
**The product is shipped with ice packs. Upon receipt, store it immediately at -80°C**

**Storage Buffer:**  
PBS Only

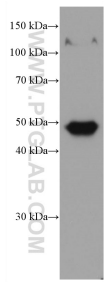
For technical support and original validation data for this product please contact:

T: 4006900926

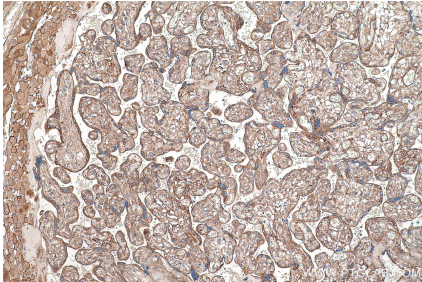
E: [Proteintech-CN@ptglab.com](mailto:Proteintech-CN@ptglab.com)W: [ptgcn.com](http://ptgcn.com)

**This product is exclusively available under Proteintech Group brand and is not available to purchase from any other manufacturer.**

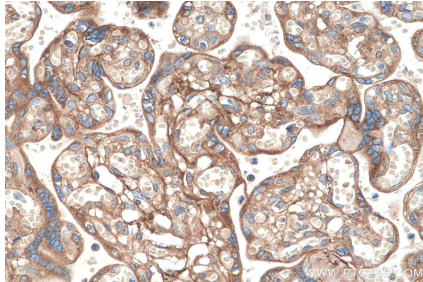
Selected Validation Data



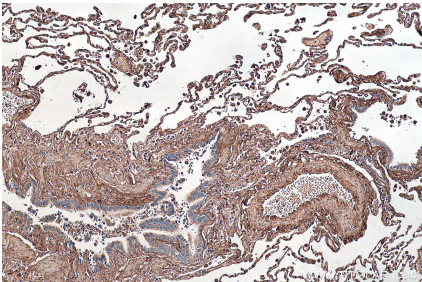
pig skin tissue were subjected to SDS PAGE followed by western blot with 67275-1-Ig (Biglycan antibody) at dilution of 1:5000 incubated at room temperature for 1.5 hours. This data was developed using the same antibody clone with 67275-1-PBS in a different storage buffer formulation.



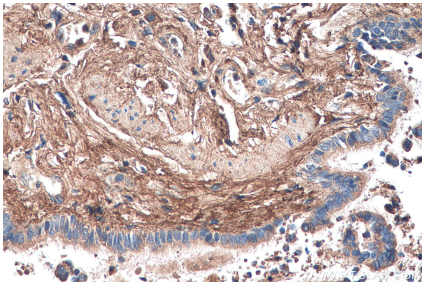
Immunohistochemical analysis of paraffin-embedded human placenta tissue slide using 67275-1-Ig (Biglycan antibody) at dilution of 1:4000 (under 10x lens). Heat mediated antigen retrieval with Tris-EDTA buffer (pH 9.0). This data was developed using the same antibody clone with 67275-1-PBS in a different storage buffer formulation.



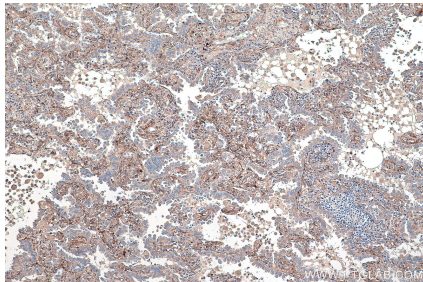
Immunohistochemical analysis of paraffin-embedded human placenta tissue slide using 67275-1-Ig (Biglycan antibody) at dilution of 1:4000 (under 40x lens). Heat mediated antigen retrieval with Tris-EDTA buffer (pH 9.0). This data was developed using the same antibody clone with 67275-1-PBS in a different storage buffer formulation.



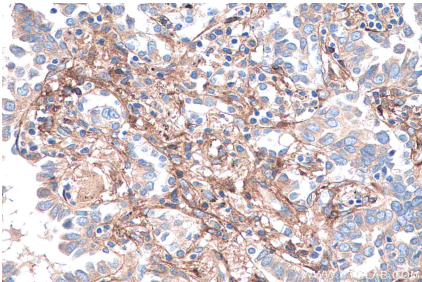
Immunohistochemical analysis of paraffin-embedded human lung tissue slide using 67275-1-Ig (Biglycan antibody) at dilution of 1:4000 (under 10x lens). Heat mediated antigen retrieval with Tris-EDTA buffer (pH 9.0). This data was developed using the same antibody clone with 67275-1-PBS in a different storage buffer formulation.



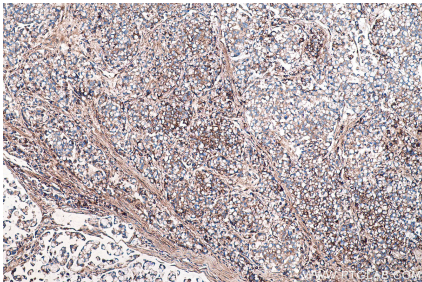
Immunohistochemical analysis of paraffin-embedded human lung tissue slide using 67275-1-Ig (Biglycan antibody) at dilution of 1:4000 (under 40x lens). Heat mediated antigen retrieval with Tris-EDTA buffer (pH 9.0). This data was developed using the same antibody clone with 67275-1-PBS in a different storage buffer formulation.



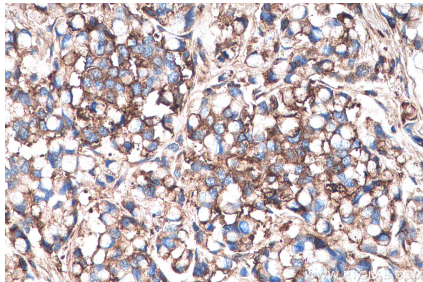
Immunohistochemical analysis of paraffin-embedded human lung cancer tissue slide using 67275-1-Ig (Biglycan antibody) at dilution of 1:4000 (under 10x lens). Heat mediated antigen retrieval with Tris-EDTA buffer (pH 9.0). This data was developed using the same antibody clone with 67275-1-PBS in a different storage buffer formulation.



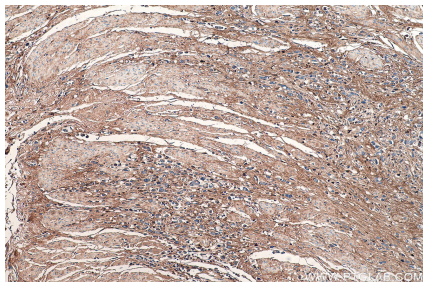
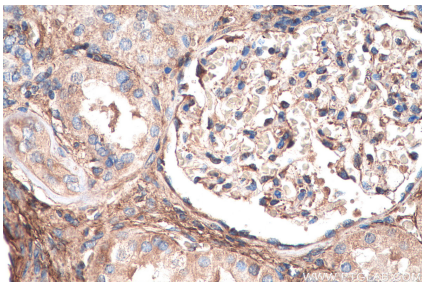
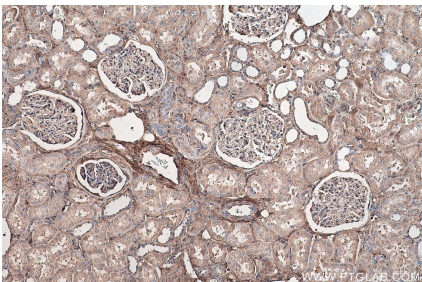
Immunohistochemical analysis of paraffin-embedded human lung cancer tissue slide using 67275-1-Ig (Biglycan antibody) at dilution of 1:4000 (under 40x lens). Heat mediated antigen retrieval with Tris-EDTA buffer (pH 9.0). This data was developed using the same antibody clone with 67275-1-PBS in a different storage buffer formulation.



Immunohistochemical analysis of paraffin-embedded human colon cancer tissue slide using 67275-1-Ig (Biglycan antibody) at dilution of 1:4000 (under 10x lens). Heat mediated antigen retrieval with Tris-EDTA buffer (pH 9.0). This data was developed using the same antibody clone with 67275-1-PBS in a different storage buffer formulation.

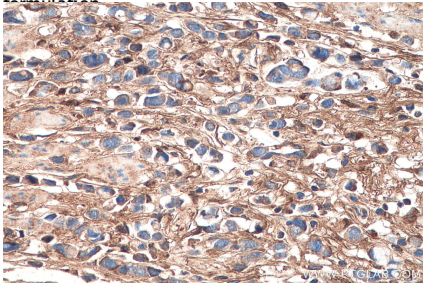


Immunohistochemical analysis of paraffin-embedded human colon cancer tissue slide using 67275-1-Ig (Biglycan antibody) at dilution of 1:4000 (under 40x lens). Heat mediated antigen retrieval with Tris-EDTA buffer (pH 9.0). This data was developed using the same antibody clone with 67275-1-PBS in a different storage buffer formulation.

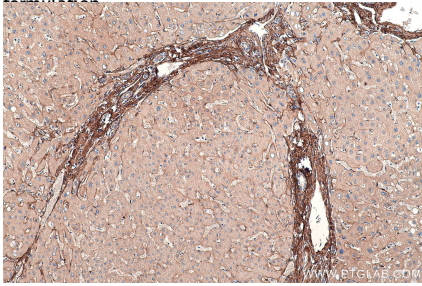




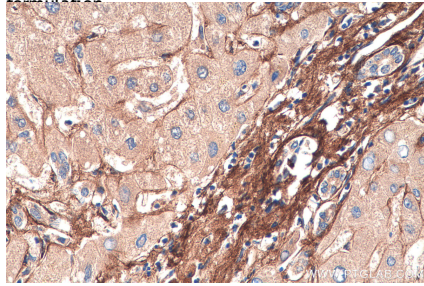
Immunohistochemical analysis of paraffin-embedded human kidney tissue slide using 67275-1-Ig (Biglycan antibody) at dilution of 1:4000 (under 10x lens). Heat mediated antigen retrieval with Tris-EDTA buffer (pH 9.0). This data was developed using the same antibody clone with 67275-1-PBS in a different storage buffer formulation.



Immunohistochemical analysis of paraffin-embedded human kidney tissue slide using 67275-1-Ig (Biglycan antibody) at dilution of 1:4000 (under 40x lens). Heat mediated antigen retrieval with Tris-EDTA buffer (pH 9.0). This data was developed using the same antibody clone with 67275-1-PBS in a different storage buffer formulation.



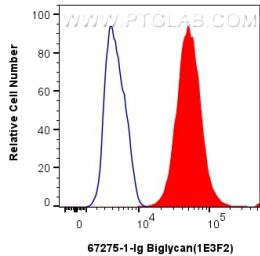
Immunohistochemical analysis of paraffin-embedded human stomach cancer tissue slide using 67275-1-Ig (Biglycan antibody) at dilution of 1:4000 (under 10x lens). Heat mediated antigen retrieval with Tris-EDTA buffer (pH 9.0). This data was developed using the same antibody clone with 67275-1-PBS in a different storage buffer formulation.



Immunohistochemical analysis of paraffin-embedded human stomach cancer tissue slide using 67275-1-Ig (Biglycan antibody) at dilution of 1:4000 (under 40x lens). Heat mediated antigen retrieval with Tris-EDTA buffer (pH 9.0). This data was developed using the same antibody clone with 67275-1-PBS in a different storage buffer formulation.

Immunohistochemical analysis of paraffin-embedded human liver tissue slide using 67275-1-Ig (Biglycan antibody) at dilution of 1:4000 (under 10x lens). Heat mediated antigen retrieval with Tris-EDTA buffer (pH 9.0). This data was developed using the same antibody clone with 67275-1-PBS in a different storage buffer formulation.

Immunohistochemical analysis of paraffin-embedded human liver tissue slide using 67275-1-Ig (Biglycan antibody) at dilution of 1:4000 (under 40x lens). Heat mediated antigen retrieval with Tris-EDTA buffer (pH 9.0). This data was developed using the same antibody clone with 67275-1-PBS in a different storage buffer formulation.



1x10<sup>6</sup> HepG2 cells were intracellularly stained with 0.4 ug Biglycan Monoclonal antibody (67275-1-Ig, Clone:1E3F2) and CoraLite®488-Conjugated AffiniPure Goat Anti-Mouse IgG(H+L) (SA00013-1)(red), or 0.4 ug Mouse IgG2a isotype control Mouse McAb (66360-2-Ig, Clone: 11A1B2) (blue). Cells were fixed with 4% PFA and permeabilized with Flow Cytometry Perm Buffer (PF00011-C). This data was developed using the same antibody clone with 67275-1-PBS in a

