

# Biglycan Monoclonal antibody

Catalog Number: 67275-1-Ig 2 Publications

## Basic Information

<b>Catalog Number:</b> 67275-1-Ig	<b>GenBank Accession Number:</b> BC004244	<b>Purification Method:</b> Protein A purification
<b>Size:</b> 1900 µg/ml	<b>GeneID (NCBI):</b> 633	<b>CloneNo.:</b> 1E3F2
<b>Source:</b> Mouse	<b>UNIPROT ID:</b> P21810	<b>Recommended Dilutions:</b> WB 1:2000-1:10000 IHC 1:2000-1:8000
<b>Isotype:</b> IgG2a	<b>Full Name:</b> biglycan	
<b>Immunogen Catalog Number:</b> AG8012	<b>Calculated MW:</b> 42 kDa <b>Observed MW:</b> 48 kDa	

## Applications

<b>Tested Applications:</b> WB, IHC, FC (Intra), ELISA	<b>Positive Controls:</b>
<b>Cited Applications:</b> WB, IHC	<b>WB :</b> pig skin tissue, HepG2 cells, pig colon tissue, mouse testis tissue
<b>Species Specificity:</b> human, mouse, pig	<b>IHC :</b> human kidney tissue, human placenta tissue, human lung tissue, human lung cancer tissue, human colon cancer tissue, human stomach cancer tissue, human liver tissue
<b>Cited Species:</b> human	
<b>Note-IHC: suggested antigen retrieval with TE buffer pH 9.0; (*) Alternatively, antigen retrieval may be performed with citrate buffer pH 6.0</b>	

## Background Information

Biglycan is a member of the small leucine-rich proteoglycan (SLRP) family (PMID: 18463092). It consists of a core protein of 42 kDa containing leucine-rich repeats (LRRs), to which two chondroitin/dermatan sulfate side chains are covalently bound (PMID: 2212616; 10383378). The tissue-specific chondroitin- or dermatan-sulfate glycosaminoglycan chains of biglycan are attached to amino acid residues at the N-terminus of the core protein (PMID: 22821552). Biglycan is a ubiquitous component of connective tissue matrix and may act as a signaling molecule (PMID: 22821552). Upregulation of biglycan has been reported in multiple types of solid cancer (PMID: 32194659).

## Notable Publications

Author	Pubmed ID	Journal	Application
Wenhong Lu	38740818	Sci Rep	IHC
Yuyu Xu	37664615	iScience	WB

## Storage

**Storage:**  
Store at -20°C. Stable for one year after shipment.  
**Storage Buffer:**  
PBS with 0.02% sodium azide and 50% glycerol pH 7.3.  
Aliquoting is unnecessary for -20°C storage

For technical support and original validation data for this product please contact:

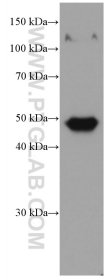
T: 4006900926

E: [Proteintech-CN@ptglab.com](mailto:Proteintech-CN@ptglab.com)

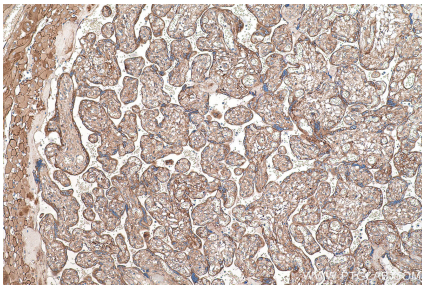
W: [ptgcn.com](http://ptgcn.com)

This product is exclusively available under Proteintech Group brand and is not available to purchase from any other manufacturer.

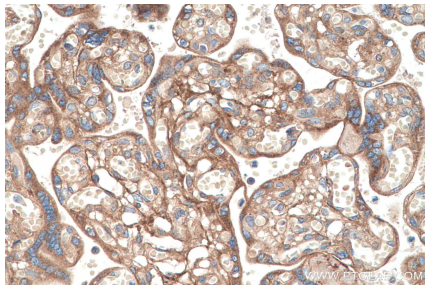
Selected Validation Data



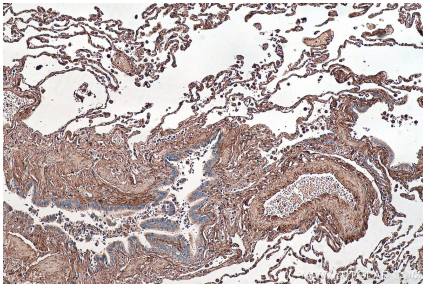
pig skin tissue were subjected to SDS PAGE followed by western blot with 67275-1-Ig (Biglycan antibody) at dilution of 1:5000 incubated at room temperature for 1.5 hours.



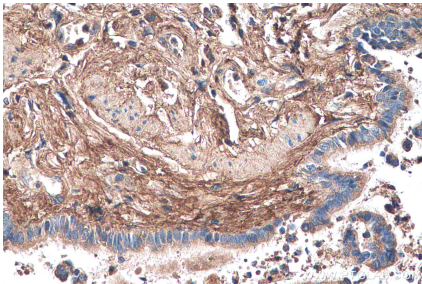
Immunohistochemical analysis of paraffin-embedded human placenta tissue slide using 67275-1-Ig (Biglycan antibody) at dilution of 1:4000 (under 10x lens). Heat mediated antigen retrieval with Tris-EDTA buffer (pH 9.0).



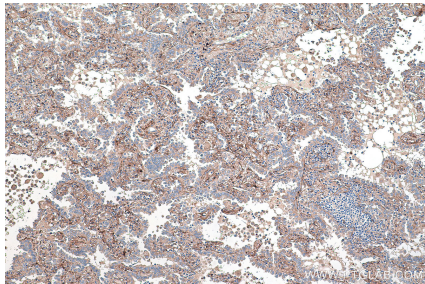
Immunohistochemical analysis of paraffin-embedded human placenta tissue slide using 67275-1-Ig (Biglycan antibody) at dilution of 1:4000 (under 40x lens). Heat mediated antigen retrieval with Tris-EDTA buffer (pH 9.0).



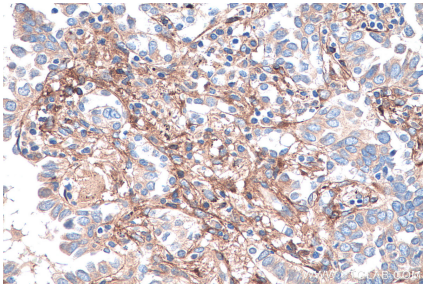
Immunohistochemical analysis of paraffin-embedded human lung tissue slide using 67275-1-Ig (Biglycan antibody) at dilution of 1:4000 (under 10x lens). Heat mediated antigen retrieval with Tris-EDTA buffer (pH 9.0).



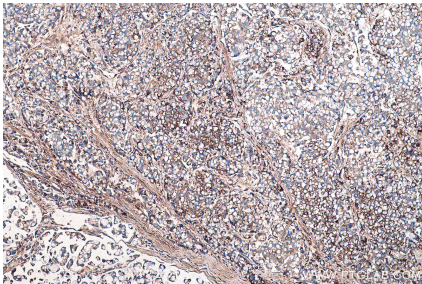
Immunohistochemical analysis of paraffin-embedded human lung tissue slide using 67275-1-Ig (Biglycan antibody) at dilution of 1:4000 (under 40x lens). Heat mediated antigen retrieval with Tris-EDTA buffer (pH 9.0).



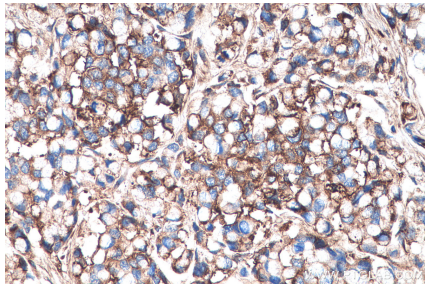
Immunohistochemical analysis of paraffin-embedded human lung cancer tissue slide using 67275-1-Ig (Biglycan antibody) at dilution of 1:4000 (under 10x lens). Heat mediated antigen retrieval with Tris-EDTA buffer (pH 9.0).



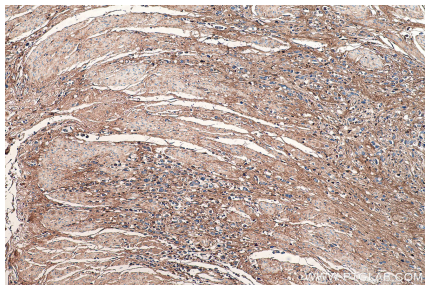
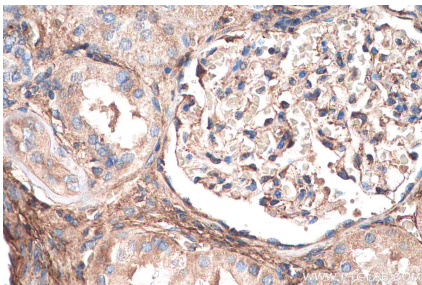
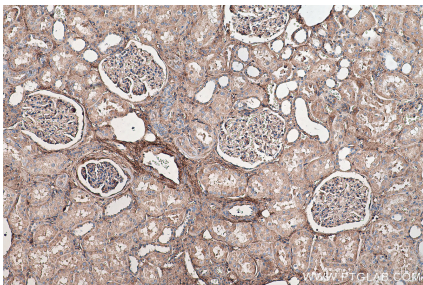
Immunohistochemical analysis of paraffin-embedded human lung cancer tissue slide using 67275-1-Ig (Biglycan antibody) at dilution of 1:4000 (under 40x lens). Heat mediated antigen retrieval with Tris-EDTA buffer (pH 9.0).



Immunohistochemical analysis of paraffin-embedded human colon cancer tissue slide using 67275-1-Ig (Biglycan antibody) at dilution of 1:4000 (under 10x lens). Heat mediated antigen retrieval with Tris-EDTA buffer (pH 9.0).

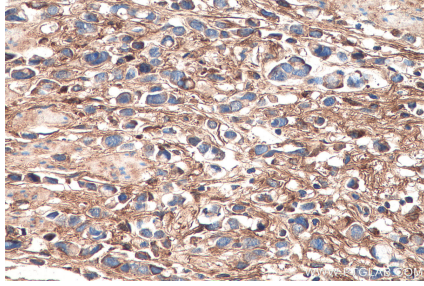


Immunohistochemical analysis of paraffin-embedded human colon cancer tissue slide using 67275-1-Ig (Biglycan antibody) at dilution of 1:4000 (under 40x lens). Heat mediated antigen retrieval with Tris-EDTA buffer (pH 9.0).

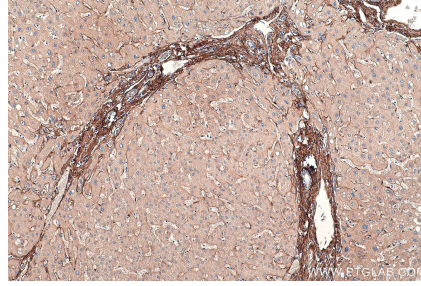




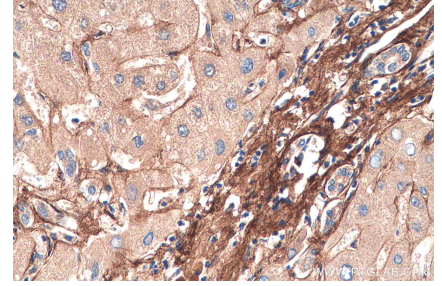
Immunohistochemical analysis of paraffin-embedded human kidney tissue slide using 67275-1-Ig (Biglycan antibody) at dilution of 1:4000 (under 10x lens). Heat mediated antigen retrieval with Tris-EDTA buffer (pH 9.0).



Immunohistochemical analysis of paraffin-embedded human kidney tissue slide using 67275-1-Ig (Biglycan antibody) at dilution of 1:4000 (under 40x lens). Heat mediated antigen retrieval with Tris-EDTA buffer (pH 9.0).



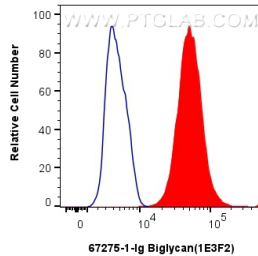
Immunohistochemical analysis of paraffin-embedded human stomach cancer tissue slide using 67275-1-Ig (Biglycan antibody) at dilution of 1:4000 (under 10x lens). Heat mediated antigen retrieval with Tris-EDTA buffer (pH 9.0).



Immunohistochemical analysis of paraffin-embedded human stomach cancer tissue slide using 67275-1-Ig (Biglycan antibody) at dilution of 1:4000 (under 40x lens). Heat mediated antigen retrieval with Tris-EDTA buffer (pH 9.0).

Immunohistochemical analysis of paraffin-embedded human liver tissue slide using 67275-1-Ig (Biglycan antibody) at dilution of 1:4000 (under 10x lens). Heat mediated antigen retrieval with Tris-EDTA buffer (pH 9.0).

Immunohistochemical analysis of paraffin-embedded human liver tissue slide using 67275-1-Ig (Biglycan antibody) at dilution of 1:4000 (under 40x lens). Heat mediated antigen retrieval with Tris-EDTA buffer (pH 9.0).



1x10<sup>6</sup> HepG2 cells were intracellularly stained with 0.4 ug Biglycan Monoclonal antibody (67275-1-Ig, Clone:1E3F2) and Coralite®488-Conjugated AffiniPure Goat Anti-Mouse IgG(H+L) (SA00013-1) (red), or 0.4 ug Mouse IgG2a isotype control Mouse McAb (66360-2-Ig, Clone: 11A1B2) (blue). Cells were fixed with 4% PFA and permeabilized with Flow Cytometry Perm Buffer (PF00011-C).