

For Research Use Only

PSG1 Monoclonal antibody, PBS Only (Capture)

Catalog Number: 67269-1-PBS



Basic Information

Catalog Number:

67269-1-PBS

Size:

1mg/ml

Source:

Mouse

Isotype:

IgG1

Immunogen Catalog Number:

AG28604

GenBank Accession Number:

BC022338

GeneID (NCBI):

5669

UNIPROT ID:

P11464

Full Name:

pregnancy specific beta-1-glycoprotein 1

Calculated MW:

426 aa, 48 kDa

Observed MW:

54-70 kDa

Purification Method:

Protein G purification

CloneNo.:

1C6C4

Applications

Tested Applications:

WB, IHC, IF-P, Cytometric bead array, Indirect ELISA

Species Specificity:

human

Background Information

Storage

Storage:

Store at -80°C.

The product is shipped with ice packs. Upon receipt, store it immediately at -80°C

Storage Buffer:

PBS Only

For technical support and original validation data for this product please contact:

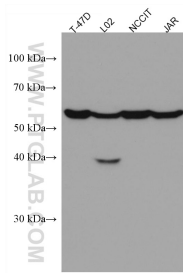
T: 4006900926

E: Proteintech-CN@ptglab.com

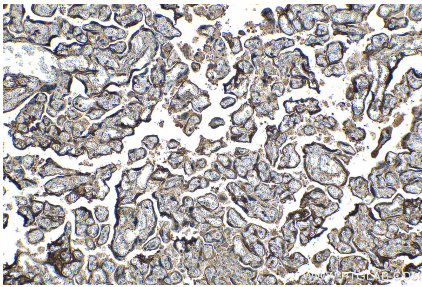
W: ptgcn.com

This product is exclusively available under Proteintech Group brand and is not available to purchase from any other manufacturer.

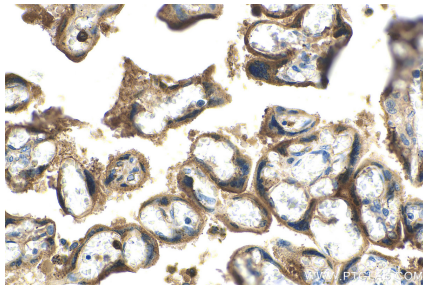
Selected Validation Data



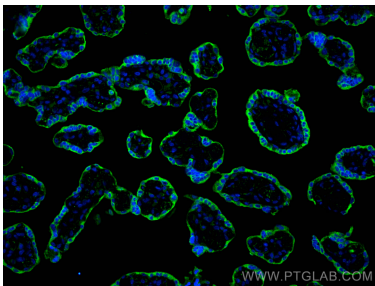
T-47D cells were subjected to SDS PAGE followed by western blot with 67269-1-Ig (PSG1 antibody) at dilution of 1:20000 incubated at room temperature for 1.5 hours. This data was developed using the same antibody clone with 67269-1-PBS in a different storage buffer formulation.



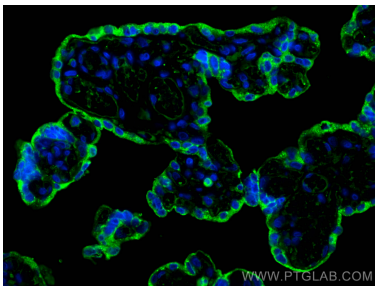
Immunohistochemical analysis of paraffin-embedded human placenta tissue slide using 67269-1-Ig (PSG1 antibody) at dilution of 1:5000 (under 10x lens). Heat mediated antigen retrieval with Tris-EDTA buffer (pH 9.0). This data was developed using the same antibody clone with 67269-1-PBS in a different storage buffer formulation.



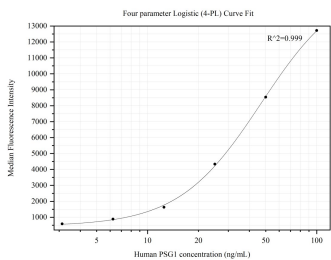
Immunohistochemical analysis of paraffin-embedded human placenta tissue slide using 67269-1-Ig (PSG1 antibody) at dilution of 1:5000 (under 40x lens). Heat mediated antigen retrieval with Tris-EDTA buffer (pH 9.0). This data was developed using the same antibody clone with 67269-1-PBS in a different storage buffer formulation.



Immunofluorescent analysis of (4% PFA) fixed paraffin-embedded human placenta tissue using PSG1 antibody (67269-1-Ig, Clone: 1C6C4) at dilution of 1:400 and CoraLite® 488-Conjugated AffiniPure Goat Anti-Mouse IgG(H+L) (SA00013-1). Heat mediated antigen retrieval with Tris-EDTA buffer (pH 9.0). This data was developed using the same antibody clone with 67269-1-PBS in a different storage buffer formulation.



Immunofluorescent analysis of (4% PFA) fixed paraffin-embedded human placenta tissue using PSG1 antibody (67269-1-Ig, Clone: 1C6C4) at dilution of 1:400 and CoraLite® 488-Conjugated AffiniPure Goat Anti-Mouse IgG(H+L) (SA00013-1). Heat mediated antigen retrieval with Tris-EDTA buffer (pH 9.0). This data was developed using the same antibody clone with 67269-1-PBS in a different storage buffer formulation.



Cytometric bead array standard curve of MP50302-2, PSG1 Monoclonal Matched Antibody Pair, PBS Only. Capture antibody: 67269-1-PBS. Detection antibody: 67269-4-PBS. Standard: Ag28604. Range: 3.125-100 ng/mL.