

For Research Use Only

PSG1 Monoclonal antibody

Catalog Number: 67269-1-Ig



Basic Information

Catalog Number:

67269-1-Ig

Size:

1600 ug/ml

Source:

Mouse

Isotype:

IgG1

Immunogen Catalog Number:

AG28604

GenBank Accession Number:

BC022338

GeneID (NCBI):

5669

UNIPROT ID:

P11464

Full Name:

pregnancy specific beta-1-glycoprotein 1

Calculated MW:

426 aa, 48 kDa

Observed MW:

54-70 kDa

Purification Method:

Protein G purification

CloneNo.:

1C6C4

Recommended Dilutions:

WB 1:5000-1:50000

IHC 1:2500-1:10000

IF-P 1:200-1:800

Applications

Tested Applications:

WB, IHC, IF-P, ELISA

Species Specificity:

human

Note-IHC: suggested antigen retrieval with TE buffer pH 9.0; (*) Alternatively, antigen retrieval may be performed with citrate buffer pH 6.0

Positive Controls:

WB : T-47D cells, L02 cells, NCCIT cells, JAR cells

IHC : human placenta tissue,

IF-P : human placenta tissue,

Background Information

Storage

Storage:

Store at -20°C. Stable for one year after shipment.

Storage Buffer:

PBS with 0.02% sodium azide and 50% glycerol pH 7.3.

Aliquoting is unnecessary for -20°C storage

For technical support and original validation data for this product please contact:

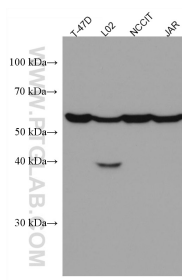
T: 4006900926

E: Proteintech-CN@ptglab.com

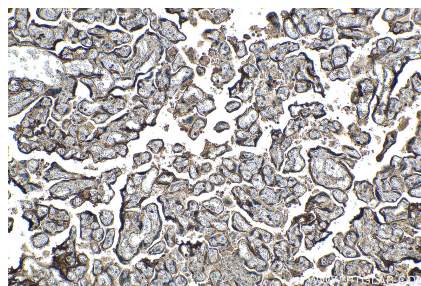
W: ptgcn.com

This product is exclusively available under Proteintech Group brand and is not available to purchase from any other manufacturer.

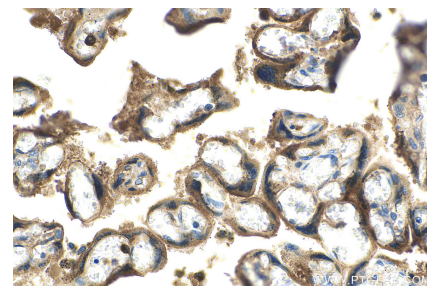
Selected Validation Data



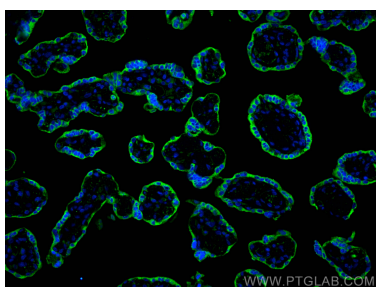
T-47D cells were subjected to SDS PAGE followed by western blot with 67269-1-Ig (PSG1 antibody) at dilution of 1:20000 incubated at room temperature for 1.5 hours.



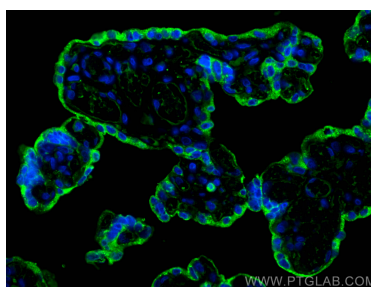
Immunohistochemical analysis of paraffin-embedded human placenta tissue slide using 67269-1-Ig (PSG1 antibody) at dilution of 1:5000 (under 10x lens). Heat mediated antigen retrieval with Tris-EDTA buffer (pH 9.0).



Immunohistochemical analysis of paraffin-embedded human placenta tissue slide using 67269-1-Ig (PSG1 antibody) at dilution of 1:5000 (under 40x lens). Heat mediated antigen retrieval with Tris-EDTA buffer (pH 9.0).



Immunofluorescent analysis of (4% PFA) fixed paraffin-embedded human placenta tissue using PSG1 antibody (67269-1-Ig, Clone: 1C6C4) at dilution of 1:400 and CoraLite® 488-Conjugated AffiniPure Goat Anti-Mouse IgG(H+L) (SA00013-1). Heat mediated antigen retrieval with Tris-EDTA buffer (pH 9.0).



Immunofluorescent analysis of (4% PFA) fixed paraffin-embedded human placenta tissue using PSG1 antibody (67269-1-Ig, Clone: 1C6C4) at dilution of 1:400 and CoraLite® 488-Conjugated AffiniPure Goat Anti-Mouse IgG(H+L) (SA00013-1). Heat mediated antigen retrieval with Tris-EDTA buffer (pH 9.0).