

For Research Use Only

# KRAS-2A-specific Monoclonal antibody



Catalog Number: 67266-1-Ig

## Basic Information

Catalog Number:

67266-1-Ig

Size:

1700  $\mu$ g/ml

Source:

Mouse

Isotype:

IgG2a

GenBank Accession Number:

NM\_033360

GeneID (NCBI):

3845

UNIPROT ID:

P01116

Full Name:

v-Ki-ras2 Kirsten rat sarcoma viral oncogene homolog

Calculated MW:

21 kDa

Observed MW:

22 kDa

Purification Method:

Protein A purification

CloneNo.:

3C8F5

Recommended Dilutions:

WB 1:1000-1:5000

IF 1:50-1:500

## Applications

Tested Applications:

IF/ICC, WB, ELISA

Species Specificity:

Human, mouse, rat, pig

Positive Controls:

WB : HeLa cells, HEK-293 cells, MCF-7 cells, SH-SY5Y cells, PC-12 cells, Neuro-2a cells

IF : HeLa cells,

## Background Information

### Storage

Storage:

Store at  $-20^{\circ}\text{C}$ . Stable for one year after shipment.

Storage Buffer:

PBS with 0.02% sodium azide and 50% glycerol pH 7.3.

Aliquoting is unnecessary for  $-20^{\circ}\text{C}$  storage

For technical support and original validation data for this product please contact:

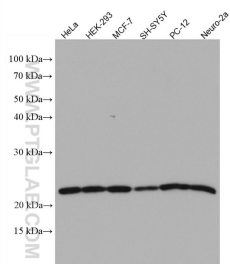
T: 4006900926

E: [Proteintech-CN@ptglab.com](mailto:Proteintech-CN@ptglab.com)

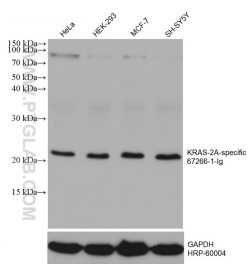
W: [ptgcn.com](http://ptgcn.com)

This product is exclusively available under Proteintech Group brand and is not available to purchase from any other manufacturer.

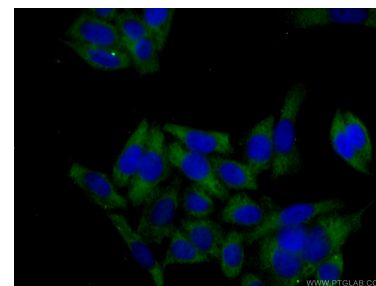
## Selected Validation Data



Various lysates were subjected to SDS PAGE followed by western blot with 67266-1-Ig (KRAS-2A-specific antibody) at dilution of 1:3000 incubated at room temperature for 1.5 hours.



Various lysates were subjected to SDS PAGE followed by western blot with 67266-1-Ig (KRAS-2A-specific antibody) at dilution of 1:3000 incubated at room temperature for 1.5 hours. The membrane was stripped and reblotted with HRP-conjugated GAPDH Monoclonal antibody (HRP-60004) as loading control.



Immunofluorescent analysis of (-20°C Ethanol) fixed HeLa cells using 67266-1-Ig (KRAS-2A-specific antibody) at dilution of 1:100 and CoraLite488-Conjugated AffiniPure Goat Anti-Mouse IgG(H+L).