

For Research Use Only

# CYP2E1-Specific Monoclonal antibody

Catalog Number: 67263-1-Ig **7 Publications**



## Basic Information

Catalog Number:	67263-1-Ig	GenBank Accession Number:	NM_000773	Purification Method:	Protein A purification
Source:	Mouse	GeneID (NCBI):	1571	CloneNo.:	1F12G7
Isotype:	IgG2b	UNIPROT ID:	P05181	Recommended Dilutions:	
		Full Name:	cytochrome P450, family 2, subfamily E, polypeptide 1	WB:	1:1000-1:6000
		Calculated MW:	57 kDa	IHC:	1:500-1:2000
		Observed MW:	50-57 kDa	IF-P:	1:400-1:1600
				IF-Fro:	1:200-1:800

## Applications

Tested Applications:	WB, IHC, IF-P, IF-Fro, ELISA	Positive Controls:	
Cited Applications:	WB, IHC	WB :	pig liver tissue, rat liver tissue, mouse liver tissue
Species Specificity:	mouse, rat, pig	IHC :	human liver tissue, human liver cancer tissue
Cited Species:	mouse	IF-P :	mouse liver tissue,
		IF-Fro :	mouse liver tissue,
<b>Note-IHC: suggested antigen retrieval with TE buffer pH 9.0; (*) Alternatively, antigen retrieval may be performed with citrate buffer pH 6.0</b>			

## Background Information

CYP2E1, also named as CYP11E1, 4-nitrophenol 2-hydroxylase, P450-J and CYP2E, belongs to the cytochrome P450 family. CYP2E1 metabolizes several precarcinogens, drugs, and solvents to reactive metabolites. It inactivates a number of drugs and xenobiotics and also bioactivates many xenobiotic substrates to their hepatotoxic or carcinogenic forms. CYP2E1 catalyze the reaction: 4-nitrophenol + NADPH + O<sub>2</sub> = 4-nitrocatechol + NADP<sup>+</sup> + H<sub>2</sub>O. CYP2E1 can be detected as 50-57 kDa(full-length) and ~40 kDa(N-terminal signal peptide cleaved) (PMID: 21130154). The antibody is specific to CYP2E1.

## Notable Publications

Author	Pubmed ID	Journal	Application
Min Wei	36182737	Biomed Pharmacother	WB
Huan Yang	34366426	Med Sci Monit	WB
Qianqian Xu	35559264	Front Pharmacol	WB,IHC

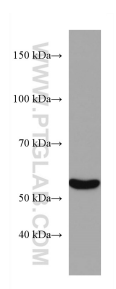
## Storage

**Storage:**  
Store at -20°C. Stable for one year after shipment.  
**Storage Buffer:**  
PBS with 0.02% sodium azide and 50% glycerol, pH7.3  
Aliquoting is unnecessary for -20°C storage

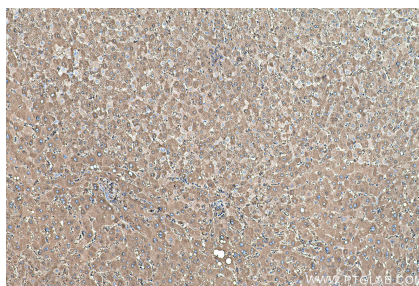
For technical support and original validation data for this product please contact:  
T: 4006900926 E: Proteintech-CN@ptglab.com W: ptgcn.com

This product is exclusively available under Proteintech Group brand and is not available to purchase from any other manufacturer.

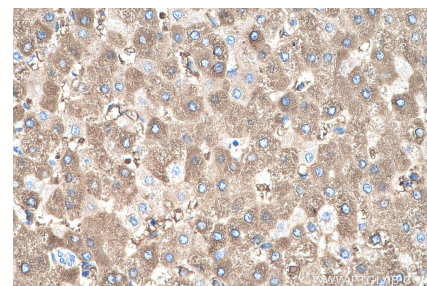
## Selected Validation Data



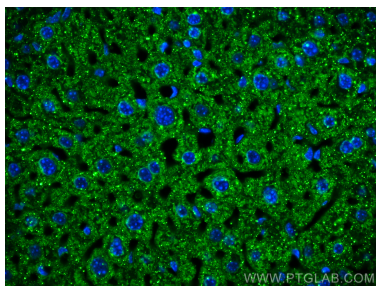
pig liver tissue were subjected to SDS PAGE followed by western blot with 67263-1-Ig (CYP2E1-Specific antibody) at dilution of 1:3000 incubated at room temperature for 1.5 hours.



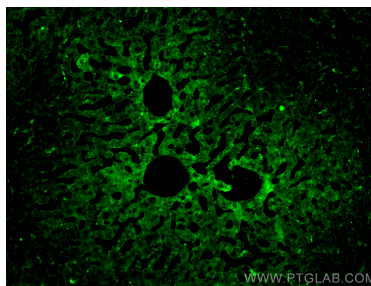
Immunohistochemical analysis of paraffin-embedded human liver tissue slide using 67263-1-Ig (CYP2E1-Specific antibody) at dilution of 1:1000 (under 10x lens). Heat mediated antigen retrieval with Tris-EDTA buffer (pH 9.0).



Immunohistochemical analysis of paraffin-embedded human liver tissue slide using 67263-1-Ig (CYP2E1-Specific antibody) at dilution of 1:1000 (under 40x lens). Heat mediated antigen retrieval with Tris-EDTA buffer (pH 9.0).



Immunofluorescent analysis of (4% PFA) fixed paraffin-embedded mouse liver tissue using CYP2E1-Specific antibody (67263-1-Ig, Clone: 1F12G7) at dilution of 1:800 and CoraLite® 488-Conjugated Goat Anti-Mouse IgG(H+L) (SA00013-1). Heat mediated antigen retrieval with Tris-EDTA buffer (pH 9.0).



Immunofluorescent analysis of (4% PFA) fixed frozen OCT-embedded mouse liver tissue using 67263-1-Ig (CYP2E1-Specific antibody) at dilution of 1:400 and CoraLite® 488-Conjugated AffiniPure Goat Anti-Mouse IgG(H+L).