

For Research Use Only

LAMC3-Specific Monoclonal antibody, PBS Only (Capture)

Catalog Number: 67261-1-PBS



Basic Information

Catalog Number:

67261-1-PBS

Concentration:

1000 μ g/ml

Source:

Mouse

Isotype:

IgG2a

Immunogen Catalog Number:

AG19568

GenBank Accession Number:

NM_006059

GeneID (NCBI):

10319

UNIPROT ID:

Q9Y6N6

Full Name:

laminin, gamma 3

Calculated MW:

1575 aa, 171 kDa

Observed MW:

180-200 kDa

Purification Method:

Protein A purification

CloneNo.:

4B8C5

Applications

Tested Applications:

WB, IF-P, Cytometric bead array, Indirect ELISA

Species Specificity:

human, mouse

Background Information

Storage

Storage:

Store at -80°C.

The product is shipped with ice packs. Upon receipt, store it immediately at -80°C

Storage Buffer:

PBS only, pH7.3

For technical support and original validation data for this product please contact:

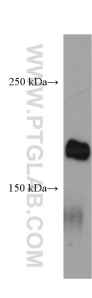
T: 4006900926

E: Proteintech-CN@ptglab.com

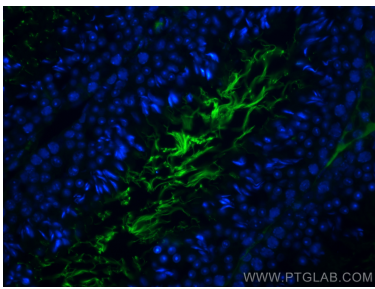
W: ptgcn.com

This product is exclusively available under Proteintech Group brand and is not available to purchase from any other manufacturer.

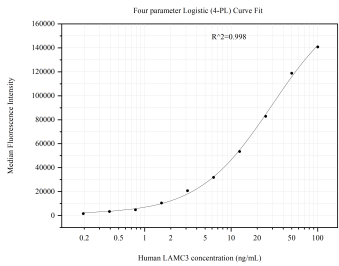
Selected Validation Data



human testis tissue were subjected to SDS PAGE followed by western blot with 67261-1-Ig (LAMC3-Specific antibody) at dilution of 1:1500 incubated at room temperature for 1.5 hours. This data was developed using the same antibody clone with 67261-1-PBS in a different storage buffer formulation.



Immunofluorescent analysis of (4% PFA) fixed mouse testis tissue using LAMC3-Specific antibody (67261-1-Ig, Clone: 4B8C5) at dilution of 1:400 and CoraLite®488-Conjugated AffiniPure Goat Anti-Mouse IgG(H+L). This data was developed using the same antibody clone with 67261-1-PBS in a different storage buffer formulation.



Cytometric bead array standard curve of MP51059-1, LAMC3-Specific Monoclonal Matched Antibody Pair, PBS Only. Capture antibody: 67261-1-PBS. Detection antibody: 67261-2-PBS. Standard:Ag19568. Range: 0.195-100 ng/mL