

# BCR Monoclonal antibody

Catalog Number: 67260-1-Ig

## Basic Information

Catalog Number:

67260-1-Ig

Size:

1600 µg/ml

Source:

Mouse

Isotype:

IgG2b

Immunogen Catalog Number:

AG28953

GenBank Accession Number:

BC066122

GeneID (NCBI):

613

UNIPROT ID:

P11274

Full Name:

breakpoint cluster region

Calculated MW:

143 kDa

Observed MW:

150-160 kDa

Purification Method:

Protein A purification

CloneNo.:

2C2E3

Recommended Dilutions:

WB 1:2000-1:10000

## Applications

Tested Applications:

WB, ELISA, FC (Intra)

Species Specificity:

Human, rat

Positive Controls:

WB : Jurkat cells, HEK-293 cells, HeLa cells

## Background Information

The Bcr gene, mapping on chromosome 22, was originally identified by its presence in the chimeric Bcr-Abl oncogene. The Bcr gene encodes for the break point cluster region protein (Bcr). Although the BCR-ABL fusion protein has been extensively studied, the function of the normal BCR gene product is not clear. The protein has serine/threonine kinase activity and is a GTPase-activating protein for RAC1 and CDC42. A chromosomal aberration involving BCR has been found in patients with chronic myeloid leukemia.

## Storage

Storage:

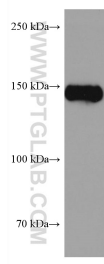
Store at -20°C. Stable for one year after shipment.

Storage Buffer:

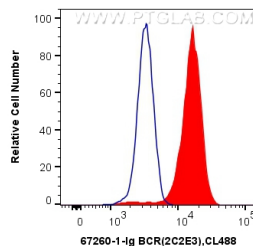
PBS with 0.02% sodium azide and 50% glycerol pH 7.3.

Aliquoting is unnecessary for -20°C storage

## Selected Validation Data



Jurkat cells were subjected to SDS PAGE followed by western blot with 67260-1-Ig (BCR antibody) at dilution of 1:5000 incubated at room temperature for 1.5 hours.



1X10<sup>6</sup> K-562 cells were intracellularly stained with 0.4 ug Anti-Human BCR (67260-1-Ig, Clone:2C2E3) and CoraLite®488-Conjugated AffiniPure Goat Anti-Mouse IgG(H+L) at dilution 1:1000 (red), or 0.4 ug Mouse IgG2b Isotype Control (66360-3-Ig, Clone:K11B8C4B5) (blue). Cells were fixed with 4% PFA and permeabilized with Flow Cytometry Perm Buffer (PF00011-C).