

For Research Use Only

# P glycoprotein Monoclonal antibody

Catalog Number: 67258-2-Ig



## Basic Information

Catalog Number:

67258-2-Ig

Size:

1000 µg/ml

Source:

Mouse

Isotype:

IgG1

Immunogen Catalog Number:

AG17811

GenBank Accession Number:

BC130424

GeneID (NCBI):

5243

UNIPROT ID:

P08183

Full Name:

ATP-binding cassette, sub-family B (MDR/TAP), member 1

Calculated MW:

1280 aa, 142 kDa

Observed MW:

130-150 kDa

Purification Method:

Protein G purification

CloneNo.:

1G6C2

Recommended Dilutions:

WB 1:1000-1:6000

IHC 1:1000-1:4000

## Applications

Tested Applications:

IHC, WB, ELISA

Species Specificity:

Human

**Note-IHC: suggested antigen retrieval with TE buffer pH 9.0; (\*) Alternatively, antigen retrieval may be performed with citrate buffer pH 6.0**

Positive Controls:

WB: unboiled HeLa cells, unboiled HepG2 cells, SH-SY5Y cells

IHC: human kidney tissue,

## Background Information

ABCB1 (also known as P-gp/ P-glycoprotein, MDR1/multidrug-resistance 1) is a plasma membrane protein first discovered in multidrug resistant tumor cells. ABCB1 can extrude a large number of medically relevant compounds from cells and causes drug resistance. ABCB1 is expressed in a variety of human cancers as well as normal tissues including brain, and placenta. Overexpression of ABCB1 correlates with a negative prognosis in several types of cancer. For optimal WB detection, we recommend to avoid boiling the sample after lysis.

## Storage

Storage:

Store at -20°C. Stable for one year after shipment.

Storage Buffer:

PBS with 0.02% sodium azide and 50% glycerol pH 7.3.

Aliquoting is unnecessary for -20°C storage

For technical support and original validation data for this product please contact:

T: 4006900926

E: [Proteintech-CN@ptglab.com](mailto:Proteintech-CN@ptglab.com)

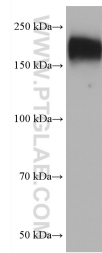
W: [ptgcn.com](http://ptgcn.com)

**This product is exclusively available under Proteintech Group brand and is not available to purchase from any other manufacturer.**

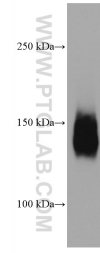
## Selected Validation Data



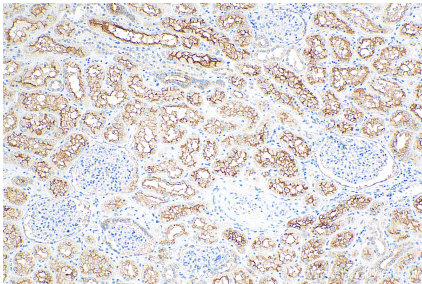
unboiled HeLa cells were subjected to SDS PAGE followed by western blot with 67258-2-Ig (ABCB1 antibody) at dilution of 1:3000 incubated at room temperature for 1.5 hours.



SH-SY5Y cells were subjected to SDS PAGE followed by western blot with 67258-2-Ig (ABCB1 antibody) at dilution of 1:3000 incubated at room temperature for 1.5 hours.



unboiled HepG2 cells were subjected to SDS PAGE followed by western blot with 67258-2-Ig (ABCB1 antibody) at dilution of 1:10000 incubated at room temperature for 1.5 hours.



Immunohistochemical analysis of paraffin-embedded human kidney tissue slide using 67258-2-Ig (ABCB1 antibody) at dilution of 1:2000 (under 10x lens). Heat mediated antigen retrieval with Tris-EDTA buffer (pH 9.0).