

For Research Use Only

CD300a Monoclonal antibody, PBS Only (Detector)

Catalog Number: 67242-1-PBS



Basic Information

Catalog Number:

67242-1-PBS

Concentration:

1 mg/ml

Source:

Mouse

Isotype:

IgG1

Immunogen Catalog Number:

AG5776

GenBank Accession Number:

BC032352

GeneID (NCBI):

11314

UNIPROT ID:

Q9UGN4

Full Name:

CD300a molecule

Calculated MW:

299 aa, 33 kDa

Observed MW:

50-60 kDa

Purification Method:

Protein G purification

CloneNo.:

2F9C5

Applications

Tested Applications:

WB, Cytometric bead array, Indirect ELISA

Species Specificity:

human

Background Information

Storage

Storage:

Store at -80°C.

The product is shipped with ice packs. Upon receipt, store it immediately at -80°C

Storage Buffer:

PBS only, pH7.3

For technical support and original validation data for this product please contact:

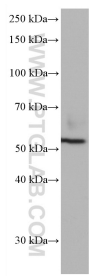
T: 4006900926

E: Proteintech-CN@ptglab.com

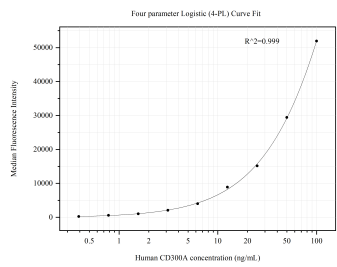
W: ptgcn.com

This product is exclusively available under Proteintech Group brand and is not available to purchase from any other manufacturer.

Selected Validation Data



THP-1 cells were subjected to SDS PAGE followed by western blot with 67242-1-Ig (CD300A antibody) at dilution of 1:2000 incubated at room temperature for 1.5 hours. This data was developed using the same antibody clone with 67242-1-PBS in a different storage buffer formulation.



Cytometric bead array standard curve of MP50466-1, CD300A Monoclonal Matched Antibody Pair, PBS Only. Capture antibody: 67242-2-PBS. Detection antibody: 67242-1-PBS. Standard:Ag5776. Range: 0.391-100 ng/mL