

For Research Use Only

CDC27; APC3 Monoclonal antibody, PBS Only



Catalog Number: 67239-1-PBS

Basic Information

Catalog Number: 67239-1-PBS	GenBank Accession Number: BC011656	Purification Method: Protein A purification
Size: 1mg/ml	GeneID (NCBI): 996	CloneNo.: 2F10G2
Source: Mouse	UNIPROT ID: P30260	
Isotype: IgG2b	Full Name: cell division cycle 27 homolog (S. cerevisiae)	
Immunogen Catalog Number: AG25588	Calculated MW: 92 kDa	
	Observed MW: 90-100 kDa	

Applications

Tested Applications:
WB, IHC, IF/ICC, IF-P, Indirect ELISA

Species Specificity:
human, mouse, rat

Background Information

CDC27/APC3 is a component of the anaphase-promoting complex (APC/cyclosome), which is composed of eight subunits and highly conserved in eukaryotic cells. The APC/cyclosome complex acts as a cell cycle-regulated E3 ubiquitin ligase which mediates ubiquitination and subsequent degradation of target proteins, and lead to the progression control through mitosis and the G1 phase of the cell cycle.

Storage

Storage:
Store at -80°C.

The product is shipped with ice packs. Upon receipt, store it immediately at -80°C

Storage Buffer:
PBS Only

For technical support and original validation data for this product please contact:

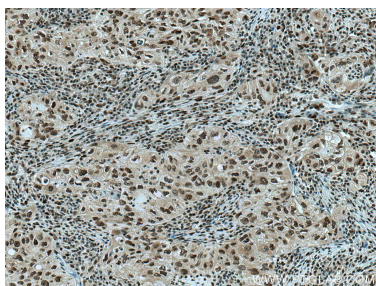
T: 4006900926

E: Proteintech-CN@ptglab.com

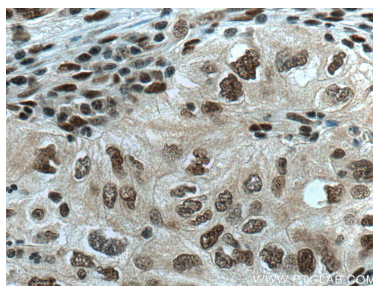
W: ptgcn.com

This product is exclusively available under Proteintech Group brand and is not available to purchase from any other manufacturer.

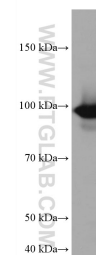
Selected Validation Data



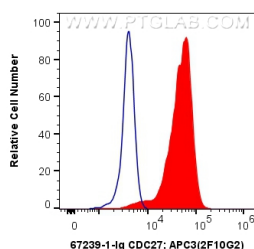
Immunohistochemical analysis of paraffin-embedded human lung cancer tissue slide using 67239-1-Ig (CDC27; APC3 antibody) at dilution of 1:5000 (under 10x lens). Heat mediated antigen retrieval with Tris-EDTA buffer (pH 9.0). This data was developed using the same antibody clone with 67239-1-PBS in a different storage buffer formulation.



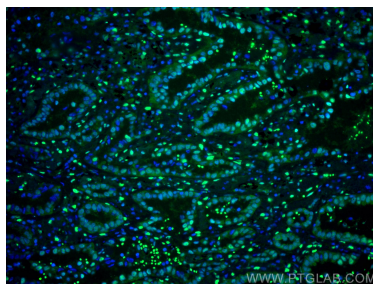
Immunohistochemical analysis of paraffin-embedded human lung cancer tissue slide using 67239-1-Ig (CDC27; APC3 antibody) at dilution of 1:5000 (under 40x lens). Heat mediated antigen retrieval with Tris-EDTA buffer (pH 9.0). This data was developed using the same antibody clone with 67239-1-PBS in a different storage buffer formulation.



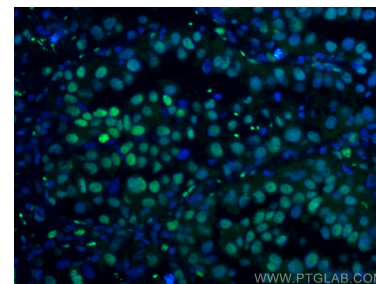
Jurkat cells were subjected to SDS PAGE followed by western blot with 67239-1-Ig (CDC27; APC3 antibody) at dilution of 1:20000 incubated at room temperature for 1.5 hours. This data was developed using the same antibody clone with 67239-1-PBS in a different storage buffer formulation.



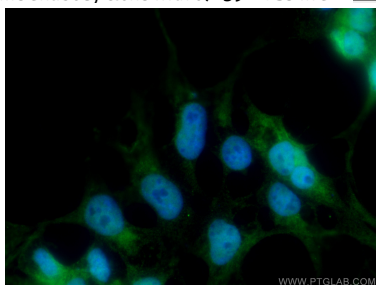
1X10⁶ K-562 cells were intracellularly stained with 0.4 ug Anti-Human CDC27; APC3 (67239-1-Ig, Clone: 2F10G2) and CoraLite®488-Conjugated AffiniPure Goat Anti-Mouse IgG(H+L) at dilution 1:1000 (red), or 0.4 ug Mouse IgG2b Isotype Control (MPC-11) (65128-1-Ig, Clone: MPC-11) (blue). Cells were fixed and permeabilized with Transcription Factor Staining Buffer Kit (PF00011). This data was developed using the same antibody clone with 67239-1-PBS in a



Immunofluorescent analysis of (4% PFA) fixed human lung cancer tissue using CDC27; APC3 antibody (67239-1-Ig, Clone: 2F10G2) at dilution of 1:400 and CoraLite®488-Conjugated AffiniPure Goat Anti-Mouse IgG(H+L). This data was developed using the same antibody clone with 67239-1-PBS in a different storage buffer formulation.



Immunofluorescent analysis of (4% PFA) fixed human lung cancer tissue using CDC27; APC3 antibody (67239-1-Ig, Clone: 2F10G2) at dilution of 1:400 and CoraLite®488-Conjugated AffiniPure Goat Anti-Mouse IgG(H+L). This data was developed using the same antibody clone with 67239-1-PBS in a different storage buffer formulation.



Immunofluorescent analysis of (4% PFA) fixed HEK-293 cells using CDC27; APC3 antibody (67239-1-Ig, Clone: 2F10G2) at dilution of 1:200 and CoraLite®488-Conjugated AffiniPure Goat Anti-Mouse IgG(H+L). This data was developed using the same antibody clone with 67239-1-PBS in a different storage buffer formulation.