

For Research Use Only

EIF5A Monoclonal antibody, PBS Only (Detector)

Catalog Number: 67214-3-PBS



Basic Information

Catalog Number:

67214-3-PBS

Concentration:

1 mg/ml

Source:

Mouse

Isotype:

IgG1

Immunogen Catalog Number:

AG28588

GenBank Accession Number:

BC001832

GeneID (NCBI):

1984

UNIPROT ID:

P63241

Full Name:

eukaryotic translation initiation factor 5A

Calculated MW:

18 kDa

Purification Method:

Protein G Magarose purification

CloneNo.:

1D6C11

Applications

Tested Applications:

Cytometric bead array, Sandwich ELISA, Indirect ELISA, Sample test

Species Specificity:

human

Background Information

Storage

Storage:

Store at -80°C.

The product is shipped with ice packs. Upon receipt, store it immediately at -80°C

Storage Buffer:

PBS Only

For technical support and original validation data for this product please contact:

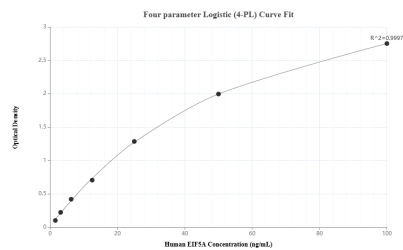
T: 4006900926

E: Proteintech-CN@ptglab.com

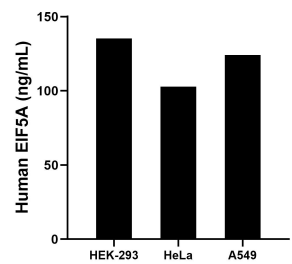
W: ptgcn.com

This product is exclusively available under Proteintech Group brand and is not available to purchase from any other manufacturer.

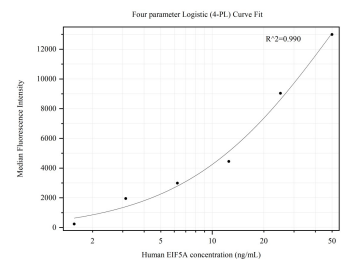
Selected Validation Data



Sandwich ELISA standard curve of MP50372-1, Human EIF5A Monoclonal Matched Antibody Pair - PBS only. 67214-2-PBS was coated to a plate as the capture antibody and incubated with serial dilutions of standard Ag1849. 67214-3-PBS was HRP conjugated as the detection antibody. Range: 1.56-100 ng/mL



The mean EIF5A concentration was determined to be 135.22 ng/mL in HEK-293 cell extract based on a 2.2 mg/mL extract load, 102.87 ng/mL in HeLa cell extract based on a 1.8 mg/mL extract load and 124.18 ng/mL in A549 cell extract based on a 3.1 mg/mL extract load.



Cytometric bead array standard curve of MP50372-1, EIF5A Monoclonal Matched Antibody Pair, PBS Only. Capture antibody: 67214-2-PBS. Detection antibody: 67214-3-PBS. Standard: Ag1849. Range: 1.563-50 ng/mL