

For Research Use Only

# EIF5A Monoclonal antibody, PBS Only (Capture)

Catalog Number: 67214-2-PBS



## Basic Information

Catalog Number: 67214-2-PBS	GenBank Accession Number: BC001832	Purification Method: Protein G purification
Concentration: 1 mg/ml	GeneID (NCBI): 1984	CloneNo.: 1E3E10
Source: Mouse	UNIPROT ID: P63241	
Isotype: IgG1	Full Name: eukaryotic translation initiation factor 5A	
Immunogen Catalog Number: AG28588	Calculated MW: 18 kDa	

## Applications

**Tested Applications:**  
Cytometric bead array, Sandwich ELISA, Indirect ELISA, Sample test

**Species Specificity:**  
human

## Background Information

### Storage

**Storage:**  
Store at -80°C.  
**The product is shipped with ice packs. Upon receipt, store it immediately at -80°C**

**Storage Buffer:**  
PBS Only

For technical support and original validation data for this product please contact:

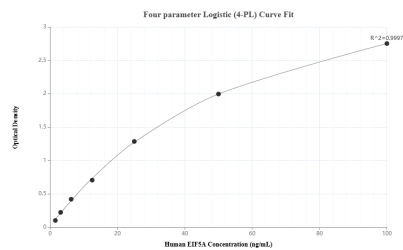
T: 4006900926

E: [Proteintech-CN@ptglab.com](mailto:Proteintech-CN@ptglab.com)

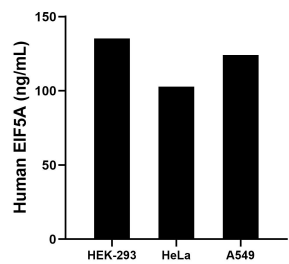
W: [ptgcn.com](http://ptgcn.com)

**This product is exclusively available under Proteintech Group brand and is not available to purchase from any other manufacturer.**

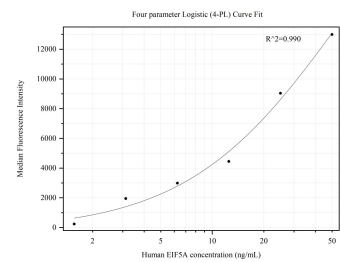
## Selected Validation Data



Sandwich ELISA standard curve of MP50372-1, Human EIF5A Monoclonal Matched Antibody Pair - PBS only. 67214-2-PBS was coated to a plate as the capture antibody and incubated with serial dilutions of standard Ag1849. 67214-3-PBS was HRP conjugated as the detection antibody. Range: 1.56-100 ng/mL



The mean EIF5A concentration was determined to be 135.22 ng/mL in HEK-293 cell extract based on a 2.2 mg/mL extract load, 102.87 ng/mL in HeLa cell extract based on a 1.8 mg/mL extract load and 124.18 ng/mL in A549 cell extract based on a 3.1 mg/mL extract load.



Cytometric bead array standard curve of MP50372-1, EIF5A Monoclonal Matched Antibody Pair, PBS Only. Capture antibody: 67214-2-PBS. Detection antibody: 67214-3-PBS. Standard: Ag1849. Range: 1.563-50 ng/mL