

For Research Use Only

DTX2 Monoclonal antibody, PBS Only (Detector)

Catalog Number: 67209-2-PBS



Basic Information

Catalog Number: 67209-2-PBS	GenBank Accession Number: BC064535	Purification Method: Protein A purification
Concentration: 1 mg/ml	GeneID (NCBI): 113878	CloneNo.: 1B8E2
Source: Mouse	UNIPROT ID: Q86UW9	
Isotype: IgG2b	Full Name: deltex homolog 2 (Drosophila)	
Immunogen Catalog Number: AG12022	Calculated MW: 253aa, 28 kDa; 575aa, 64 kDa	

Applications

Tested Applications:
Cytometric bead array, Indirect ELISA, Sample test

Species Specificity:
human

Background Information

Storage

Storage:
Store at -80°C.
The product is shipped with ice packs. Upon receipt, store it immediately at -80°C

Storage Buffer:
PBS only, pH7.3

For technical support and original validation data for this product please contact:

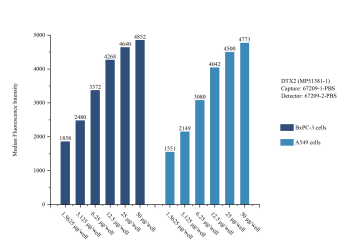
T: 4006900926

E: Proteintech-CN@ptglab.com

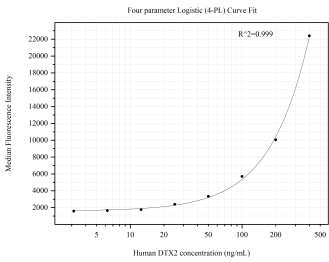
W: ptgcn.com

This product is exclusively available under Proteintech Group brand and is not available to purchase from any other manufacturer.

Selected Validation Data



Sample test of MP51381-1, DTX2 Monoclonal Matched Antibody Pair, PBS Only. Capture antibody: 67209-1-PBS. Detection antibody: 67209-2-PBS.



Cytometric bead array standard curve of MP51381-1, DTX2 Monoclonal Matched Antibody Pair, PBS Only. Capture antibody: 67209-1-PBS. Detection antibody: 67209-2-PBS. Standard:Ag12022. Range: 3.125-400 ng/mL