

# IFIT3 Monoclonal antibody

Catalog Number: 67208-1-Ig

## Basic Information

Catalog Number:

67208-1-Ig

Size:

1700 µg/ml

Source:

Mouse

Isotype:

IgG2a

Immunogen Catalog Number:

AG7518

GenBank Accession Number:

BC004977

GeneID (NCBI):

3437

UNIPROT ID:

O14879

Full Name:

IFIT3

Calculated MW:

56 kDa

Observed MW:

60 kDa

Purification Method:

Protein A purification

CloneNo.:

2C8B10

Recommended Dilutions:

WB 1:1000-1:6000

IHC 1:150-1:600

IF/ICC 1:200-1:800

## Applications

Tested Applications:

IF/ICC, IHC, WB, ELISA

Species Specificity:

Human

**Note-IHC: suggested antigen retrieval with TE buffer pH 9.0; (\*) Alternatively, antigen retrieval may be performed with citrate buffer pH 6.0**

Positive Controls:

WB : HeLa cells, HepG2 cells, SGC-7901 cells, Caco-2 cells

IHC : human spleen tissue,

IF/ICC : HepG2 cells,

## Background Information

IFIT3 (IFN-induced protein with tetratricopeptide repeats 3), also known as IFIT-4, ISG-60 or RIG-G, is a 56 kDa IFN induced protein. IFIT3 has been identified to be associated with strong IFN antiviral activity. Upon RNA virus infection, IFIT3 is significantly induced, ectopic expression or knockdown of IFIT3 could, respectively, enhance or impair IFN regulatory factor 3 (IRF3)-mediated gene expression. IFIT3 thus may serve as an important modulator in innate immunity, revealing a new function of the IFIT family proteins.

## Storage

Storage:

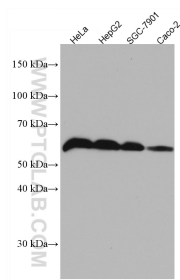
Store at -20°C.

Storage Buffer:

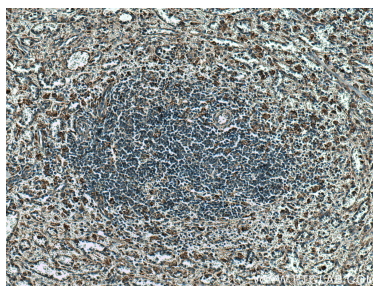
PBS with 0.02% sodium azide and 50% glycerol pH 7.3.

Aliquoting is unnecessary for -20°C storage

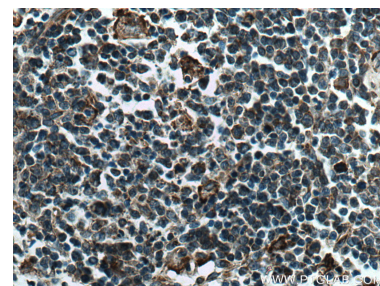
## Selected Validation Data



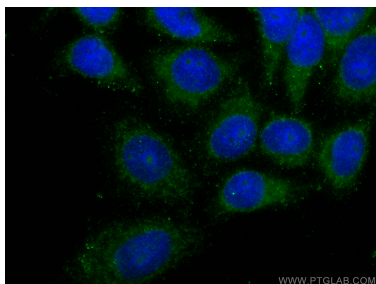
Various lysates were subjected to SDS PAGE followed by western blot with 67208-1-Ig (IFIT3 antibody) at dilution of 1:3000 incubated at room temperature for 1.5 hours.



Immunohistochemical analysis of paraffin-embedded human spleen tissue slide using 67208-1-Ig (IFIT3 antibody) at dilution of 1:300 (under 10x lens). Heat mediated antigen retrieval with Tris-EDTA buffer (pH 9.0).



Immunohistochemical analysis of paraffin-embedded human spleen tissue slide using 67208-1-Ig (IFIT3 antibody) at dilution of 1:300 (under 40x lens). Heat mediated antigen retrieval with Tris-EDTA buffer (pH 9.0).



Immunofluorescent analysis of (-20°C Ethanol) fixed HepG2 cells using IFIT3 antibody (67208-1-Ig, Clone: 2C8B10) at dilution of 1:400 and CoraLite®488-Conjugated AffiniPure Goat Anti-Mouse IgG(H+L).