

For Research Use Only

DCC-Specific Monoclonal antibody

Catalog Number: 67203-1-Ig **2 Publications**



Basic Information

Catalog Number: 67203-1-Ig	GenBank Accession Number: NM_005215	Purification Method: Protein A purification
Size: 2400 µg/ml	GeneID (NCBI): 1630	CloneNo.: 2G4G4
Source: Mouse	UNIPROT ID: P43146	Recommended Dilutions: WB 1:1000-1:4000
Isotype: IgG2a	Full Name: deleted in colorectal carcinoma	
Immunogen Catalog Number: AG20569	Calculated MW: 1447 aa, 158 kDa	
	Observed MW: 180 kDa	

Applications

Tested Applications: WB, ELISA	Positive Controls: WB : mouse brain tissue,
Cited Applications: WB, IF	
Species Specificity: Human, Mouse	
Cited Species: mouse	

Background Information

DCC, also named as IGDCC1, belongs to the immunoglobulin superfamily and DCC family. DCC is a receptor for netrin required for axon guidance. DCC plays a key role in the developing nervous system. Its association with UNC5 proteins may trigger signaling for axon repulsion. It also acts as a dependence receptor required for apoptosis induction when not associated with netrin ligand. DCC gene is a tumor suppressor gene. This antibody recognizes endogenous DCC with an apparent molecular weight of 180 kDa. As the predicted molecular mass of DCC is 158 kDa, the slower mobility is likely attributable to post-translational modification, perhaps by glycosylation at potential N-linked glycosylation sites (PMID: 7926722; 8044801).

Notable Publications

Author	Pubmed ID	Journal	Application
Shaojie Yang	39224830	Neurobiol Stress	WB,IF
Jiamin Hu	38848974	J Ethnopharmacol	WB,IF

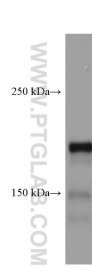
Storage

Storage:
Store at -20°C.
Storage Buffer:
PBS with 0.02% sodium azide and 50% glycerol pH 7.3.
Aliquoting is unnecessary for -20°C storage

For technical support and original validation data for this product please contact:
T: 4006900926 E: Proteintech-CN@ptglab.com W: ptgcn.com

This product is exclusively available under Proteintech Group brand and is not available to purchase from any other manufacturer.

Selected Validation Data



mouse brain tissue were subjected to SDS PAGE followed by western blot with 67203-1-Ig (DCC-Specific antibody) at dilution of 1:2000 incubated at room temperature for 1.5 hours.