

For Research Use Only

# PITX2 Monoclonal antibody

Catalog Number: 67201-1-Ig

Featured Product

2 Publications



## Basic Information

Catalog Number:

67201-1-Ig

Concentration:

1500 ug/ml

Source:

Mouse

Isotype:

IgG1

Immunogen Catalog Number:

AG27924

GenBank Accession Number:

BC013998

GeneID (NCBI):

5308

UNIPROT ID:

Q99697

Full Name:

paired-like homeodomain 2

Calculated MW:

36 kDa

Observed MW:

30 kDa

Purification Method:

Protein A purification

CloneNo.:

1E3B1

Recommended Dilutions:

WB 1:5000-1:50000

## Applications

Tested Applications:

WB, ELISA

Cited Applications:

WB

Species Specificity:

human, mouse, rat

Cited Species:

mouse, rat

Positive Controls:

WB : rat brain tissue, HEK-293 cells, mouse brain tissue, rat cerebellum tissue, mouse cerebellum tissue

## Background Information

PITX2 belongs to the bicoid class of homeodomain transcription factors, which play essential roles in embryonic development. Various PITX2 isoforms are involved in a wide variety of developmental programs, including left-right signaling. It controls cell proliferation in a tissue-specific manner and is involved in morphogenesis. During embryonic development, PITX2 is involved in the expansion of muscle progenitors. In addition, it may play a role in the proper localization of asymmetric organs such as the heart and stomach. PITX2 can be bound by some other proteins, and are part of a much larger atrial transcriptional complex. This antibody specifically recognizes isoform PTX2C.

## Notable Publications

Author	Pubmed ID	Journal	Application
Heng Zhang	37950730	Aging (Albany NY)	WB
Yi Yang	35836351	Oral Dis	WB

## Storage

Storage:

Store at -20°C. Stable for one year after shipment.

Storage Buffer:

PBS with 0.02% sodium azide and 50% glycerol, pH7.3

Aliquoting is unnecessary for -20°C storage

For technical support and original validation data for this product please contact:

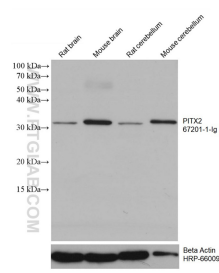
T: 4006900926

E: [Proteintech-CN@ptglab.com](mailto:Proteintech-CN@ptglab.com)

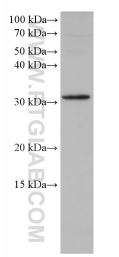
W: [ptgcn.com](http://ptgcn.com)

This product is exclusively available under Proteintech Group brand and is not available to purchase from any other manufacturer.

## Selected Validation Data



Various lysates were subjected to SDS PAGE followed by western blot with 67201-1-Ig (PITX2 antibody) at dilution of 1:10000 incubated at room temperature for 1.5 hours. The membrane was stripped and reblotted with HRP-conjugated Beta Actin Monoclonal antibody (HRP-66009) as loading control.



HEK-293 cells were subjected to SDS PAGE followed by western blot with 67201-1-Ig (PITX2 antibody) at dilution of 1:10000 incubated at room temperature for 1.5 hours.