

For Research Use Only

SBDS Monoclonal antibody

Catalog Number: 67200-1-Ig

Featured Product

1 Publications



Basic Information

Catalog Number:

67200-1-Ig

Size:

1500 µg/ml

Source:

Mouse

Isotype:

IgG2a

Immunogen Catalog Number:

AG11731

GenBank Accession Number:

BC065700

GeneID (NCBI):

51119

UNIPROT ID:

Q9Y3A5

Full Name:

Shwachman-Bodian-Diamond syndrome

Calculated MW:

250 aa, 29 kDa

Observed MW:

29-31 kDa

Purification Method:

Protein A purification

CloneNo.:

1F8A10

Recommended Dilutions:

WB 1:5000-1:50000

IHC 1:1000-1:4000

IF 1:50-1:500

Applications

Tested Applications:

IF/ICC, IHC, WB, ELISA

Cited Applications:

WB

Species Specificity:

Human, mouse, rat

Cited Species:

human

Note-IHC: suggested antigen retrieval with TE buffer pH 9.0; (*) Alternatively, antigen retrieval may be performed with citrate buffer pH 6.0

Positive Controls:

WB : HeLa cells, HEK-293 cells, HepG2 cells, Jurkat cells, HSC-T6 cells, NIH/3T3 cells, 4T1 cells

IHC : human breast cancer tissue,

IF : HepG2 cells,

Background Information

Shwachman-Bodian-Diamond syndrome (SBDS) is a member of a highly conserved protein family that exists from archaea to vertebrates and plants. The protein may function in RNA metabolism. Mutations within its gene are associated with Shwachman-Bodian-Diamond syndrome. This gene encodes a member of a highly conserved protein family that exists from archaea to vertebrates and plants. The encoded protein may function in RNA metabolism. Mutations within this gene are associated with Shwachman-Bodian-Diamond syndrome. An alternative transcript has been described, but its biological nature has not been determined.

Notable Publications

Author	Pubmed ID	Journal	Application
David P Dannheisig	34944838	Cancers (Basel)	WB

Storage

Storage:

Store at -20°C. Stable for one year after shipment.

Storage Buffer:

PBS with 0.02% sodium azide and 50% glycerol pH 7.3.

Aliquoting is unnecessary for -20°C storage

For technical support and original validation data for this product please contact:

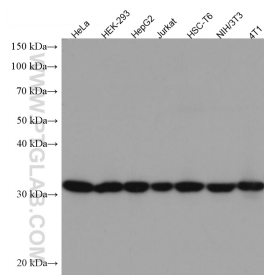
T: 4006900926

E: Proteintech-CN@ptglab.com

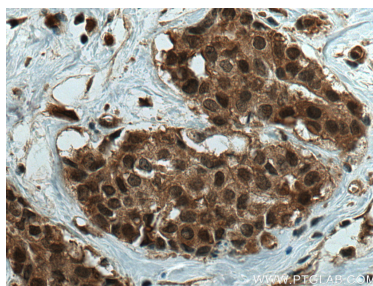
W: ptgcn.com

This product is exclusively available under Proteintech Group brand and is not available to purchase from any other manufacturer.

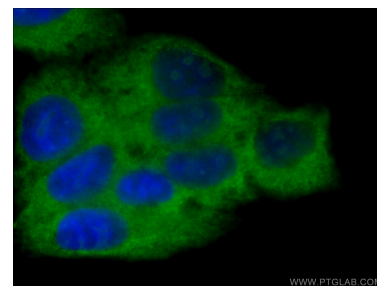
Selected Validation Data



Various lysates were subjected to SDS PAGE followed by western blot with 67200-1-Ig (SBDS antibody) at dilution of 1:20000 incubated at room temperature for 1.5 hours.



Immunohistochemical analysis of paraffin-embedded human breast cancer tissue slide using 67200-1-Ig (SBDS antibody) at dilution of 1:2000 (under 40x lens). Heat mediated antigen retrieval with Tris-EDTA buffer (pH 9.0).



Immunofluorescent analysis of (-20°C Ethanol) fixed HepG2 cells using 67200-1-Ig (SBDS antibody) at dilution of 1:100 and CoraLite488-Conjugated AffiniPure Goat Anti-Mouse IgG(H+L).