

EIF4G1 Monoclonal antibody, PBS Only

Catalog Number: 67199-1-PBS

Basic Information

Catalog Number: 67199-1-PBS	GenBank Accession Number: BC007788	Purification Method: Protein A purification
Size: 1 mg/ml	GeneID (NCBI): 1981	CloneNo.: 2B10G8
Source: Mouse	UNIPROT ID: Q04637	
Isotype: IgG1	Full Name: eukaryotic translation initiation factor 4 gamma, 1	
Immunogen Catalog Number: AG8357	Calculated MW: 1600 aa, 176 kDa	
	Observed MW: 240-250 kDa	

Applications

Tested Applications:
WB, Indirect ELISA, IHC, IF

Species Specificity:
Human, mouse, rat

Background Information

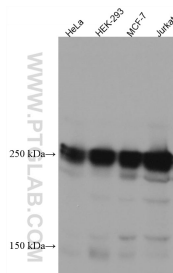
Eukaryotic cellular messenger RNAs are posttranscriptionally modified by addition of an m(7)GTP moiety to the 5'-prime terminus, referred to as a cap. Recognition of the cap structure and unwinding of mRNA secondary structure during the initiation phase of protein synthesis is catalyzed by initiation factors of the eIF4 group. EIF4G1, a subunit of eIF4 gamma, forms various complexes with the other eIF4 polypeptides [PMID: 7601469]. Mutations in the EIF4G1 gene, encoding a component of the eIF4F translation initiation complex, were recently reported as a possible cause for the autosomal dominant form of Parkinson's disease [PMID: 22658323]. The calculated molecular weight of EIF4G1 is 175 kDa, but modified EIF4G1 is about 220-240 kDa. (PMID: 18426977)

Storage

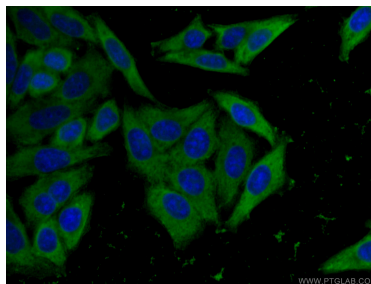
Storage:
Store at -80°C.
The product is shipped with ice packs. Upon receipt, store it immediately at -80°C

Storage Buffer:
PBS Only

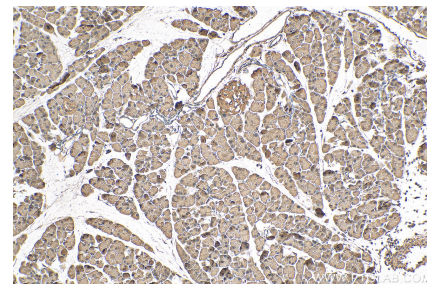
Selected Validation Data



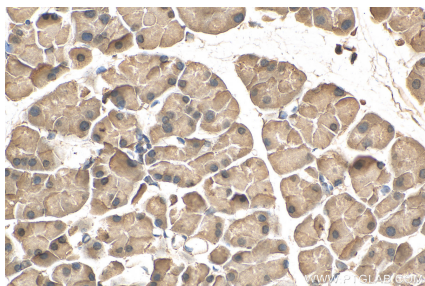
Various lysates were subjected to SDS PAGE followed by western blot with 67199-1-Ig (EIF4G1 antibody) at dilution of 1:10000 incubated at room temperature for 1.5 hours. This data was developed using the same antibody clone with 67199-1-PBS in a different storage buffer formulation.



Immunofluorescent analysis of (-20°C Ethanol) fixed HepG2 cells using 67199-1-Ig (EIF4G1 antibody) at dilution of 1:100 and CoraLite488-Conjugated AffiniPure Goat Anti-Mouse IgG(H+L). This data was developed using the same antibody clone with 67199-1-PBS in a different storage buffer formulation.



Immunohistochemical analysis of paraffin-embedded mouse pancreas tissue slide using 67199-1-Ig (EIF4G1 antibody) at dilution of 1:200 (under 10x lens). Heat mediated antigen retrieval with Tris-EDTA buffer (pH 9.0). This data was developed using the same antibody clone with 67199-1-PBS in a different storage buffer formulation.



Immunohistochemical analysis of paraffin-embedded mouse pancreas tissue slide using 67199-1-Ig (EIF4G1 antibody) at dilution of 1:200 (under 40x lens). Heat mediated antigen retrieval with Tris-EDTA buffer (pH 9.0). This data was developed using the same antibody clone with 67199-1-PBS in a different storage buffer formulation.