

For Research Use Only

# UBE1 Monoclonal antibody

Catalog Number: 67198-1-Ig **1 Publications**



## Basic Information

<b>Catalog Number:</b> 67198-1-Ig	<b>GenBank Accession Number:</b> BC013041	<b>Purification Method:</b> Protein A purification
<b>Size:</b> 1800 µg/ml	<b>GeneID (NCBI):</b> 7317	<b>CloneNo.:</b> 1H7E8
<b>Source:</b> Mouse	<b>UNIPROT ID:</b> P22314	<b>Recommended Dilutions:</b> WB 1:5000-1:30000 IHC 1:500-1:2000 IF 1:200-1:800
<b>Isotype:</b> IgG2a	<b>Full Name:</b> ubiquitin-like modifier activating enzyme 1	
<b>Immunogen Catalog Number:</b> AG8920	<b>Calculated MW:</b> 1058 aa, 118 kDa	
	<b>Observed MW:</b> 114-118 kDa	

## Applications

<b>Tested Applications:</b> IF/ICC, IHC, WB, ELISA	<b>Positive Controls:</b>
<b>Cited Applications:</b> IHC	<b>WB:</b> HeLa cells, HeLa cell, HEK-293 cells, Jurkat cells, HL-60 cells, K-562 cells, HSC-T6 cells, RAW 264.7 cells, NIH/3T3 cells
<b>Species Specificity:</b> Human, mouse, rat	<b>IHC:</b> human colon cancer tissue, human lung cancer tissue
<b>Cited Species:</b> human	<b>IF:</b> HeLa cells,
<b>Note-IHC: suggested antigen retrieval with TE buffer pH 9.0; (*) Alternatively, antigen retrieval may be performed with citrate buffer pH 6.0</b>	

## Background Information

### Notable Publications

Author	Pubmed ID	Journal	Application
Jinsheng Liu	37417208	Biosci Rep	IHC

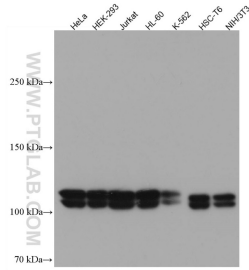
## Storage

**Storage:**  
Store at -20°C.  
**Storage Buffer:**  
PBS with 0.02% sodium azide and 50% glycerol pH 7.3.  
Aliquoting is unnecessary for -20°C storage

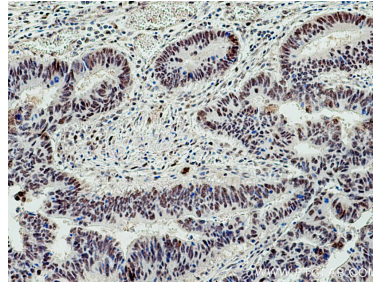
For technical support and original validation data for this product please contact:  
T: 4006900926 E: Proteintech-CN@ptglab.com W: ptgcn.com

This product is exclusively available under Proteintech Group brand and is not available to purchase from any other manufacturer.

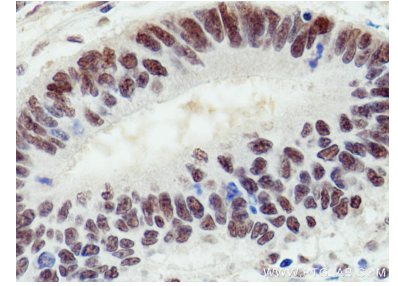
## Selected Validation Data



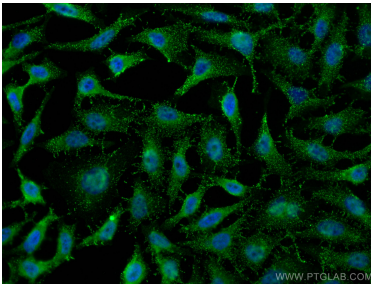
Various lysates were subjected to SDS PAGE followed by western blot with 67198-1-Ig (UBE1 antibody) at dilution of 1:5000 incubated at room temperature for 1.5 hours.



Immunohistochemical analysis of paraffin-embedded human colon cancer tissue slide using 67198-1-Ig (UBE1 antibody) at dilution of 1:1000 (under 10x lens). Heat mediated antigen retrieval with Tris-EDTA buffer (pH 9.0).



Immunohistochemical analysis of paraffin-embedded human colon cancer tissue slide using 67198-1-Ig (UBE1 antibody) at dilution of 1:1000 (under 40x lens). Heat mediated antigen retrieval with Tris-EDTA buffer (pH 9.0).



Immunofluorescent analysis of (4% PFA) fixed HeLa cells using UBE1 antibody (67198-1-Ig, Clone: 1H7E8) at dilution of 1:400 and CoraLite®488-Conjugated AffiniPure Goat Anti-Mouse IgG(H+L).