

For Research Use Only

SHC1 Monoclonal antibody, PBS Only (Capture)

Catalog Number: 67194-2-PBS



Basic Information

Catalog Number:	67194-2-PBS	GenBank Accession Number:	NM_183001	Purification Method:	Protein A purification
Size:	1 mg/ml	GeneID (NCBI):	6464	CloneNo.:	1A5B1
Source:	Mouse	UNIPROT ID:	P29353		
Isotype:	IgG2b	Full Name:	SHC (Src homology 2 domain containing) transforming protein 1		
Immunogen Catalog Number:	AG25173	Calculated MW:	63 kDa		
		Observed MW:	66 kDa		

Applications

Tested Applications:
WB, Cytometric bead array, Indirect ELISA

Species Specificity:
human

Background Information

The proto-oncogene SHC family consists of SHCA, SHCB, SHCC, and SHCD4 gene members, which can encode 7 kinds of cohesive molecules. SHC family is widely expressed and functional. The SHC1 gene is located in zone 1, region 2 of human chromosome 1. SHC1 is believed to be involved in inhibiting neuronal apoptosis and regulating the receptor tyrosine kinase pathway. SHC1 sensitizes cancer cells to the 8-CL-cAMP treatment.

Storage

Storage:
Store at -80°C.

The product is shipped with ice packs. Upon receipt, store it immediately at -80°C

Storage Buffer:
PBS Only

For technical support and original validation data for this product please contact:

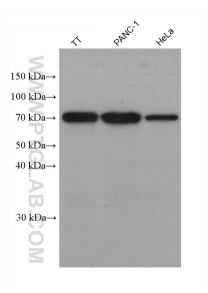
T: 4006900926

E: Proteintech-CN@ptglab.com

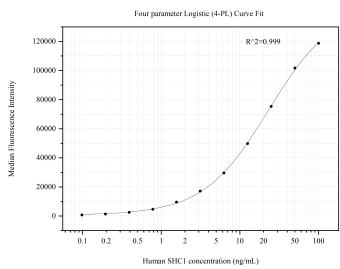
W: ptgcn.com

This product is exclusively available under Proteintech Group brand and is not available to purchase from any other manufacturer.

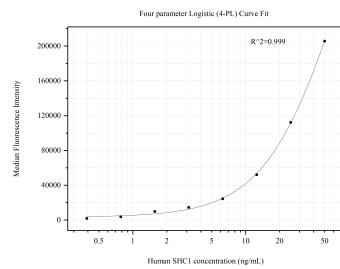
Selected Validation Data



Various lysates were subjected to SDS PAGE followed by western blot with 67194-2-Ig (SHC1 antibody) at dilution of 1:20000 incubated at room temperature for 1.5 hours. This data was developed using the same antibody clone with 67194-2-PBS in a different storage buffer formulation.



Cytometric bead array standard curve of MP50763-1, SHC1 Monoclonal Matched Antibody Pair, PBS Only. Capture antibody: 67194-2-PBS. Detection antibody: 67194-3-PBS. Standard:Ag25173. Range: 0.098-100 ng/mL



Cytometric bead array standard curve of MP50763-3, SHC1 Monoclonal Matched Antibody Pair, PBS Only. Capture antibody: 67194-2-PBS. Detection antibody: 67194-4-PBS. Standard:Ag25173. Range: 0.391-50 ng/mL