

For Research Use Only

KIF20A Monoclonal antibody, PBS Only

Catalog Number: 67190-1-PBS

Featured Product



Basic Information

Catalog Number:

67190-1-PBS

Size:

1 mg/ml

Source:

Mouse

Isotype:

IgG1

Immunogen Catalog Number:

AG8916

GenBank Accession Number:

BC012999

GeneID (NCBI):

10112

UNIPROT ID:

O95235

Full Name:

kinesin family member 20A

Calculated MW:

890 aa, 100 kDa

Observed MW:

100 kDa

Purification Method:

Protein A purification

CloneNo.:

2A8E3

Applications

Tested Applications:

WB, IHC, ELISA

Species Specificity:

human, mouse, rat

Background Information

KIF20A, also known as RAB6KIFL or MKlp2, is a kinesin originally identified as a binding partner for the rab6 GTPase involved in protein transport at the Golgi apparatus. KIF20A belongs to a large family of motor proteins that accumulate in mitotic cells and is required for normal cell division. KIF20A is thought to be involved in carcinogenesis. In normal tissues KIF20A is almost undetectable while it is overexpressed in various cancers. KIF20A has been identified as a novel promising candidate for anticancer immunotherapy.

Storage

Storage:

Store at -80°C.

The product is shipped with ice packs. Upon receipt, store it immediately at -80°C

Storage Buffer:

PBS Only

For technical support and original validation data for this product please contact:

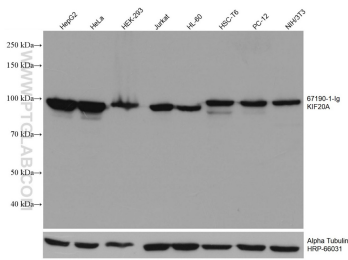
T: 4006900926

E: Proteintech-CN@ptglab.com

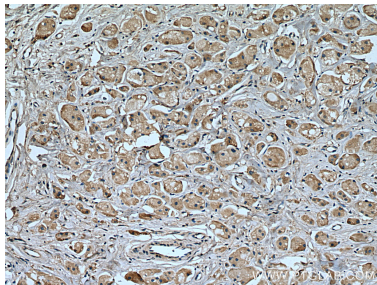
W: ptgcn.com

This product is exclusively available under Proteintech Group brand and is not available to purchase from any other manufacturer.

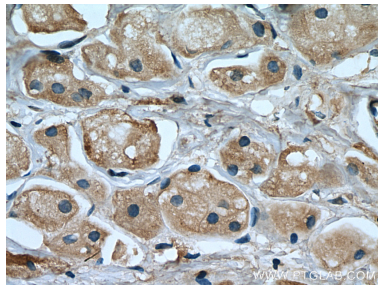
Selected Validation Data



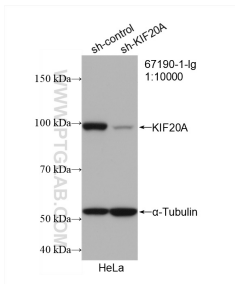
Various lysates were subjected to SDS PAGE followed by western blot with 67190-1-Ig (KIF20A antibody) at dilution of 1:10000 incubated at room temperature for 1.5 hours. The membrane was stripped and reblotted with HRP-conjugated Alpha Tubulin Monoclonal antibody (HRP-66031) as loading control. This data was developed using the same antibody clone with 67190-1-PBS in a different storage buffer formulation.



Immunohistochemical analysis of paraffin-embedded human breast cancer tissue slide using 67190-1-Ig (KIF20A antibody) at dilution of 1:400 (under 10x lens). Heat mediated antigen retrieval with Tris-EDTA buffer (pH 9.0). This data was developed using the same antibody clone with 67190-1-PBS in a different storage buffer formulation.



Immunohistochemical analysis of paraffin-embedded human breast cancer tissue slide using 67190-1-Ig (KIF20A antibody) at dilution of 1:400 (under 40x lens). Heat mediated antigen retrieval with Tris-EDTA buffer (pH 9.0). This data was developed using the same antibody clone with 67190-1-PBS in a different storage buffer formulation.



WB result of KIF20A antibody (67190-1-Ig; 1:10000; incubated at room temperature for 1.5 hours) with sh-Control and sh-KIF20A transfected HeLa cells. This data was developed using the same antibody clone with 67190-1-PBS in a different storage buffer formulation.