

For Research Use Only

GPI Monoclonal antibody, PBS Only

Catalog Number: 67178-1-PBS

Featured Product



Basic Information

Catalog Number: 67178-1-PBS	GenBank Accession Number: BC004982	Purification Method: Protein A purification
Size: 1mg/ml	GeneID (NCBI): 2821	CloneNo.: 2F11E4
Source: Mouse	UNIPROT ID: P06744	
Isotype: IgG1	Full Name: glucose phosphate isomerase	
Immunogen Catalog Number: AG7419	Calculated MW: 63 kDa	
	Observed MW: 55-64 kDa	

Applications

Tested Applications:
WB, IHC, IF/ICC, ELISA

Species Specificity:
human

Background Information

GPI (Glucose-6-phosphate isomerase), which is also named as autocrine motility factor (AMF), phosphoglucose isomerase (PGI), Neuroleukinin (NLK), phosphohexose isomerase (PHI) or sperm antigen 36 (SA-36), is a housekeeping cytosolic enzyme that plays a key role in both glycolysis and gluconeogenesis pathways. It is also a multifunctional protein that displays cytokine properties, eliciting mitogenic, motogenic, and differentiation activities, and has been implicated in tumor progression and metastasis (PMID:12783864, 19603112). This protein can exist as a homodimer in the catalytically active form and a monomer in the secreted form (PMID:11371164). It has 2 isoforms produced by alternative splicing with the calculated molecular mass of 63-64 kDa, and an apparent molecular mass of 55 and 64 kDa under non-reducing and reducing conditions, respectively (PMID: 19603112, 11004567).

Storage

Storage:
Store at -80°C.
The product is shipped with ice packs. Upon receipt, store it immediately at -80°C

Storage Buffer:
PBS Only

For technical support and original validation data for this product please contact:

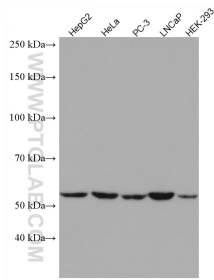
T: 4006900926

E: Proteintech-CN@ptglab.com

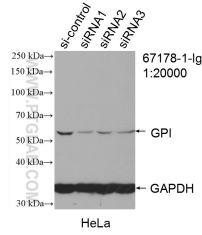
W: ptgcn.com

This product is exclusively available under Proteintech Group brand and is not available to purchase from any other manufacturer.

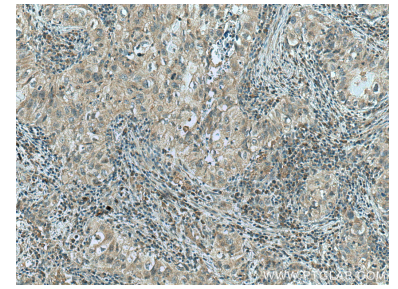
Selected Validation Data



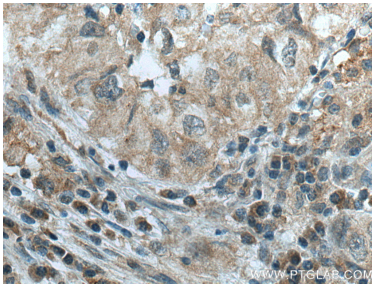
Various lysates were subjected to SDS PAGE followed by western blot with 67178-1-Ig (GPI antibody) at dilution of 1:10000 incubated at room temperature for 1.5 hours. This data was developed using the same antibody clone with 67178-1-PBS in a different storage buffer formulation.



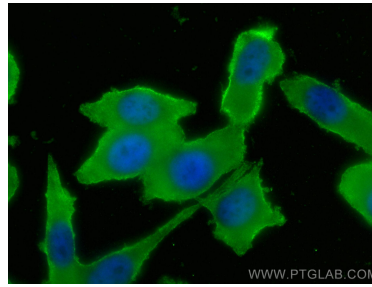
WB result of GPI antibody (67178-1-Ig: 1:20000; incubated at room temperature for 1.5 hours) with sh-Control and sh-GPI transfected HeLa cells. This data was developed using the same antibody clone with 67178-1-PBS in a different storage buffer formulation.



Immunohistochemical analysis of paraffin-embedded human lung cancer tissue slide using 67178-1-Ig (GPI antibody) at dilution of 1:1000 (under 10x lens). Heat mediated antigen retrieval with Tris-EDTA buffer (pH 9.0). This data was developed using the same antibody clone with 67178-1-PBS in a different storage buffer formulation.



Immunohistochemical analysis of paraffin-embedded human lung cancer tissue slide using 67178-1-Ig (GPI antibody) at dilution of 1:1000 (under 40x lens). Heat mediated antigen retrieval with Tris-EDTA buffer (pH 9.0). This data was developed using the same antibody clone with 67178-1-PBS in a different storage buffer formulation.



Immunofluorescent analysis of (-20°C Ethanol) fixed PC-3 cells using GPI antibody (67178-1-Ig, Clone: 2F11E4) at dilution of 1:800 and Multi-rAb Coralite® Plus 488-Goat Anti-Mouse Recombinant Secondary Antibody (H+L) (RGAM002). This data was developed using the same antibody clone with 67178-1-PBS in a different storage buffer formulation.