

For Research Use Only

ERK1/2 Monoclonal antibody

Catalog Number: 67170-1-Ig **70 Publications**



Basic Information

Catalog Number:	67170-1-Ig	GenBank Accession Number:	NM_002746	Purification Method:	Protein A purification
Concentration:	1564 µg/ml	GeneID (NCBI):	5595	CloneNo.:	1A3D3
Source:	Mouse	UNIPROT ID:	P27361	Recommended Dilutions:	WB 1:5000-1:50000 IHC 1:500-1:2000
Isotype:	IgG2a	Full Name:	mitogen-activated protein kinase 3		
		Calculated MW:	38-43 kDa		

Applications

Tested Applications:	WB, IHC, ELISA	Positive Controls:	
Cited Applications:	WB, IHC	WB :	PC-12 cells, HeLa cells, Jurkat cells, RAW 264.7 cells, ROS1728 cells
Species Specificity:	Human, Mouse, Rat	IHC :	human ovary tumor tissue,
Cited Species:	human, mouse, rat, rabbit		
Note-IHC: suggested antigen retrieval with TE buffer pH 9.0; (*) Alternatively, antigen retrieval may be performed with citrate buffer pH 6.0			

Background Information

ERK1 and ERK2 belongs to the protein kinase superfamily. It is involved in both the initiation and regulation of meiosis, mitosis, and postmitotic functions in differentiated cells by phosphorylating a number of transcription factors such as ELK-1. ERK1/2 catalyzed the reaction: ATP + a protein = ADP + a phosphoprotein. It is activated by tyrosine phosphorylation in response to INS and NGF. This antibody can recognize both ERK1 and ERK2 with the molecular mass of 38-44 kDa.

Notable Publications

Author	Pubmed ID	Journal	Application
Bingyu Xie	36179941	Mol Cell Endocrinol	WB
Liping Wang	34559939	IUBMB Life	WB
Pengyun Li	36130940	Cell Death Dis	WB

Storage

Storage:
Store at -20°C. Stable for one year after shipment.
Storage Buffer:
PBS with 0.02% sodium azide and 50% glycerol pH 7.3.
Aliquoting is unnecessary for -20°C storage

For technical support and original validation data for this product please contact:

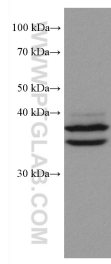
T: 4006900926

E: Proteintech-CN@ptglab.com

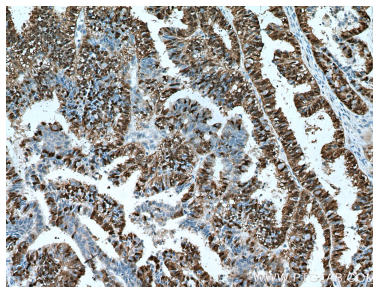
W: ptgcn.com

This product is exclusively available under Proteintech Group brand and is not available to purchase from any other manufacturer.

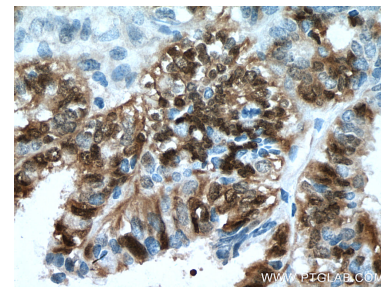
Selected Validation Data



PC-12 cells were subjected to SDS PAGE followed by western blot with 67170-1-Ig (ERK1/2 antibody) at dilution of 1:10000 incubated at room temperature for 1.5 hours.



Immunohistochemical analysis of paraffin-embedded human ovary tumor tissue slide using 67170-1-Ig (ERK1/2 antibody) at dilution of 1:1000 (under 10x lens). Heat mediated antigen retrieval with Tris-EDTA buffer (pH 9.0).



Immunohistochemical analysis of paraffin-embedded human ovary tumor tissue slide using 67170-1-Ig (ERK1/2 antibody) at dilution of 1:1000 (under 40x lens). Heat mediated antigen retrieval with Tris-EDTA buffer (pH 9.0).