

HUS1 Monoclonal antibody

Catalog Number: 67168-1-Ig

Basic Information

Catalog Number: 67168-1-Ig	GenBank Accession Number: BC007013	Purification Method: Protein G purification
Size: 2100 µg/ml	GeneID (NCBI): 3364	CloneNo.: 1E8E9
Source: Mouse	UNIPROT ID: O60921	Recommended Dilutions: WB 1:1000-1:6000 IHC 1:150-1:600
Isotype: IgG1	Full Name: HUS1 checkpoint homolog (S. pombe)	
Immunogen Catalog Number: AG28527	Calculated MW: 32 kDa Observed MW: 32 kDa	

Applications

Tested Applications:

IHC, WB, ELISA

Species Specificity:

Human

Note-IHC: suggested antigen retrieval with TE buffer pH 9.0; (*) Alternatively, antigen retrieval may be performed with citrate buffer pH 6.0

Positive Controls:

WB : HeLa cells, HEK-293 cells, A549 cells, U2OS cells, Jurkat cells, K-562 cells

IHC : human prostate cancer tissue,

Background Information

Hus1 belongs to the Rad family, form a heterotrimeric clamp with Rad1 and Rad9 that acts as a putative sensor for DNA damage. This complex plays an apical role in the DNA damage response, loss of a functional complex affects many downstream checkpoint pathways [PMID: 11340080]. It is also a key complex involved in the activation of the ATR pathway. 9-1-1 forms a ring-shaped heterotrimer, resembling the homotrimeric sliding clamp, proliferating cell nuclear antigen (PCNA) [PMID: 19535328].

Storage

Storage:

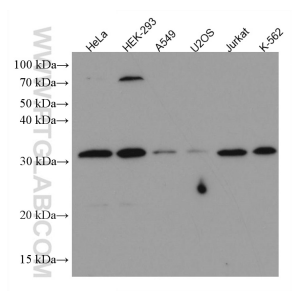
Store at -20°C. Stable for one year after shipment.

Storage Buffer:

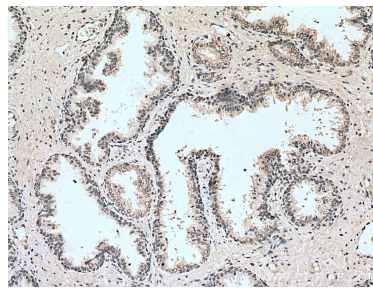
PBS with 0.02% sodium azide and 50% glycerol pH 7.3.

Aliquoting is unnecessary for -20°C storage

Selected Validation Data



Various lysates were subjected to SDS PAGE followed by western blot with 67168-1-Ig (HUS1 antibody) at dilution of 1:3000 incubated at room temperature for 1.5 hours.



Immunohistochemical analysis of paraffin-embedded human prostate cancer tissue slide using 67168-1-Ig (HUS1 antibody) at dilution of 1:300 (under 10x lens). Heat mediated antigen retrieval with Tris-EDTA buffer (pH 9.0).