

For Research Use Only

# GBP1 Monoclonal antibody

Catalog Number: 67161-1-Ig **3 Publications**



## Basic Information

<b>Catalog Number:</b> 67161-1-Ig	<b>GenBank Accession Number:</b> BC002666	<b>Purification Method:</b> Protein A purification
<b>Size:</b> 2100 ug/ml	<b>GeneID (NCBI):</b> 2633	<b>CloneNo.:</b> 2A10E8
<b>Source:</b> Mouse	<b>UNIPROT ID:</b> P32455	<b>Recommended Dilutions:</b> WB 1:5000-1:50000 IHC 1:1000-1:4000
<b>Isotype:</b> IgG2b	<b>Full Name:</b> GTP binding protein 1	
<b>Immunogen Catalog Number:</b> AG7767	<b>Calculated MW:</b> 68 kDa	
	<b>Observed MW:</b> 68 kDa	

## Applications

<b>Tested Applications:</b> IHC, WB, ELISA	<b>Positive Controls:</b>
<b>Cited Applications:</b> WB, IF	<b>WB :</b> HeLa cells, human placenta tissue, HUVEC cells, pig spleen tissue, rat spleen tissue, HEK-293 cells
<b>Species Specificity:</b> human, rat, pig	<b>IHC :</b> human ovary tumor tissue,
<b>Cited Species:</b> human, mouse, chinese tree shrews	
<b>Note-IHC: suggested antigen retrieval with TE buffer pH 9.0; (*) Alternatively, antigen retrieval may be performed with citrate buffer pH 6.0</b>	

## Background Information

Guanylate binding protein 1 (GBP1) belongs to the dynamin superfamily of large GTPases. The expression of GBP1 is induced by IFN and GBP1 is characterized by its ability to specifically bind guanine nucleotides such as GMP, GDP, and GTP and its ability to hydrolyze GTP to GDP and GMP. GBP1 is induced in response to type I and type II IFNs and as such plays a role in protective immunity against a spectrum of intracellular pathogens ranging from viruses to bacteria to protozoa, such as negative-strand RNA Rhabdovirus, vesicular stomatitis virus and the positive-strand RNA Picornavirus, encephalomyocarditis virus in cultured cells, the inhibition of Chlamydia trachomatis, Toxoplasma gondii, and Salmonella enterica.

## Notable Publications

Author	Pubmed ID	Journal	Application
Tianle Gu	34732469	J Immunol	WB,IF
Yinnan Meng	33552086	Front Immunol	WB,IF
Zhiqiang Li	38678845	Vet Microbiol	WB

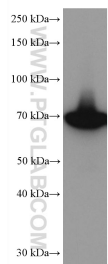
## Storage

**Storage:**  
Store at -20°C. Stable for one year after shipment.  
**Storage Buffer:**  
PBS with 0.02% sodium azide and 50% glycerol pH 7.3.  
Aliquoting is unnecessary for -20°C storage

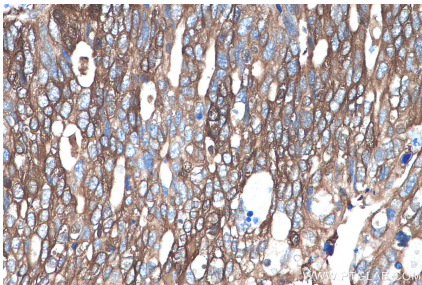
For technical support and original validation data for this product please contact:  
T: 4006900926 E: Proteintech-CN@ptglab.com W: ptgcn.com

This product is exclusively available under Proteintech Group brand and is not available to purchase from any other manufacturer.

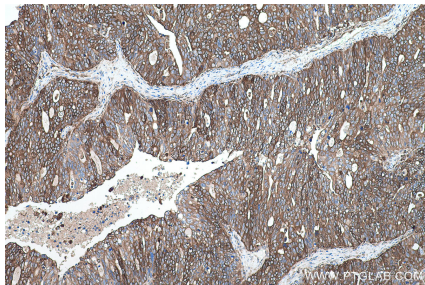
## Selected Validation Data



HeLa cells were subjected to SDS PAGE followed by western blot with 67161-1-Ig (GBP1 antibody) at dilution of 1:10000 incubated at room temperature for 1.5 hours.



Immunohistochemical analysis of paraffin-embedded human ovary tumor tissue slide using 67161-1-Ig (GBP1 antibody) at dilution of 1:2000 (under 40x lens). Heat mediated antigen retrieval with Tris-EDTA buffer (pH 9.0).



Immunohistochemical analysis of paraffin-embedded human ovary tumor tissue slide using 67161-1-Ig (GBP1 antibody) at dilution of 1:2000 (under 10x lens). Heat mediated antigen retrieval with Tris-EDTA buffer (pH 9.0).