

For Research Use Only

DEFA1 Monoclonal antibody

Catalog Number: 67156-1-Ig



Basic Information

Catalog Number:

67156-1-Ig

Concentration:

2000 ug/ml

Source:

Mouse

Isotype:

IgG2b

Immunogen Catalog Number:

AG12592

GenBank Accession Number:

BC093791

GeneID (NCBI):

1667

UNIPROT ID:

P59665

Full Name:

defensin, alpha 1

Calculated MW:

94 aa, 10 kDa

Observed MW:

6-10 kDa

Purification Method:

Protein A purification

CloneNo.:

1A2B3

Recommended Dilutions:

WB 1:1000-1:5000

IHC 1:1000-1:4000

IF-P 1:200-1:800

Applications

Tested Applications:

WB, IHC, IF-P, ELISA

Species Specificity:

human, mouse

Note-IHC: suggested antigen retrieval with *TE buffer pH 9.0*; (*) Alternatively, antigen retrieval may be performed with *citrate buffer pH 6.0*

Positive Controls:

WB : Human peripheral blood leukocyte cells,

IHC : human small intestine tissue,

IF-P : mouse spleen tissue,

Background Information

Storage

Storage:

Store at -20°C. Stable for one year after shipment.

Storage Buffer:

PBS with 0.02% sodium azide and 50% glycerol, pH7.3

Aliquoting is unnecessary for -20°C storage

For technical support and original validation data for this product please contact:

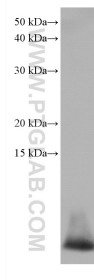
T: 4006900926

E: Proteintech-CN@ptglab.com

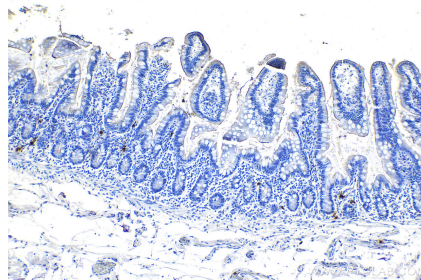
W: ptgcn.com

This product is exclusively available under Proteintech Group brand and is not available to purchase from any other manufacturer.

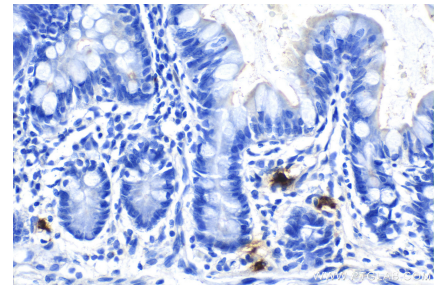
Selected Validation Data



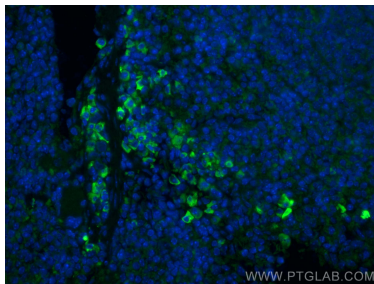
Human peripheral blood leukocyte cells were subjected to SDS PAGE followed by western blot with 67156-1-Ig (DEFA1 antibody) at dilution of 1:2500 incubated at room temperature for 1.5 hours.



Immunohistochemical analysis of paraffin-embedded human small intestine tissue slide using 67156-1-Ig (DEFA1 antibody) at dilution of 1:2000 (under 10x lens).



Immunohistochemical analysis of paraffin-embedded human small intestine tissue slide using 67156-1-Ig (DEFA1 antibody) at dilution of 1:2000 (under 40x lens).



Immunofluorescent analysis of (4% PFA) fixed paraffin-embedded mouse spleen tissue using DEFA1 antibody (67156-1-Ig, Clone: 1A2B3) at dilution of 1:400 and Coralite® 488-Conjugated AffiniPure Goat Anti-Mouse IgG(H+L) (SA00013-1). Heat mediated antigen retrieval with Tris-EDTA buffer (pH 9.0).