

For Research Use Only

CD138/Syndecan-1 Monoclonal antibody, PBS Only (Detector)

Catalog Number: 67155-1-PBS



Basic Information

Catalog Number:	67155-1-PBS	GenBank Accession Number:	BC008765	Purification Method:	Protein A purification
Concentration:	1000 µg/ml	GeneID (NCBI):	6382	CloneNo.:	4F3A8
Source:	Mouse	UNIPROT ID:	P18827		
Isotype:	IgG2a	Full Name:	syndecan 1		
Immunogen Catalog Number:	AG0823	Calculated MW:	32.5 kDa		

Applications

Tested Applications:
IHC, IF-P, Sandwich ELISA, Indirect ELISA, Sample test

Species Specificity:
human

Background Information

Syndecan-1 (SDC1), also named CD138, is an integral membrane protein. It participates in cell proliferation, cell migration and cell-matrix interactions via its receptor for extracellular matrix proteins. It is a heparan sulfate proteoglycan expressed on the surface of, and actively shed by, myeloma cells. Altered syndecan-1 expression has been detected in several different tumor types. SDC1 was regarded as a useful marker for labeling normal and neoplastic plasma cells and plasmacytoid lymphomas.

Storage

Storage:
Store at -80°C.
The product is shipped with ice packs. Upon receipt, store it immediately at -80°C

Storage Buffer:
PBS only, pH7.3

For technical support and original validation data for this product please contact:

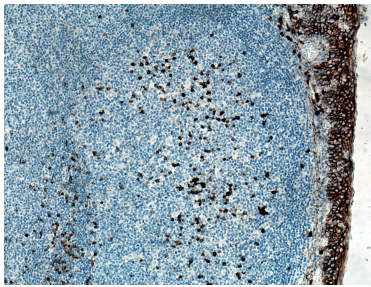
T: 4006900926

E: Proteintech-CN@ptglab.com

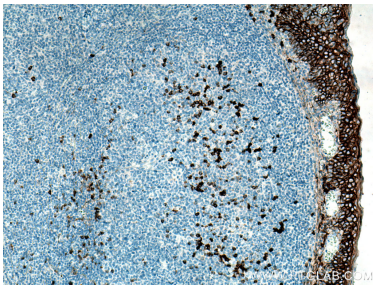
W: ptgcn.com

This product is exclusively available under Proteintech Group brand and is not available to purchase from any other manufacturer.

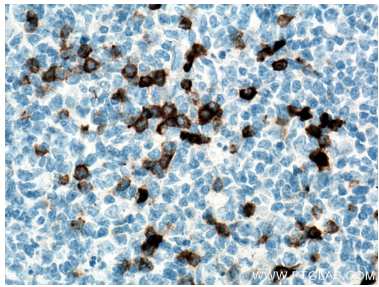
Selected Validation Data



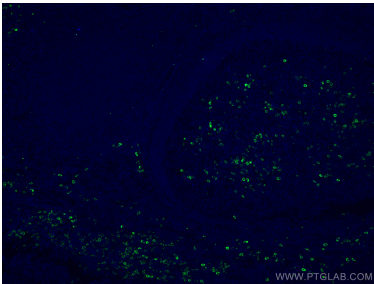
Immunohistochemical analysis of paraffin-embedded human tonsillitis tissue slide using 67155-1-Ig (CD138/Syndecan-1 antibody) at dilution of 1:4000 (under 10x lens). Heat mediated antigen retrieval with Tris-EDTA buffer (pH 9.0). This data was developed using the same antibody clone with 67155-1-PBS in a different storage buffer formulation.



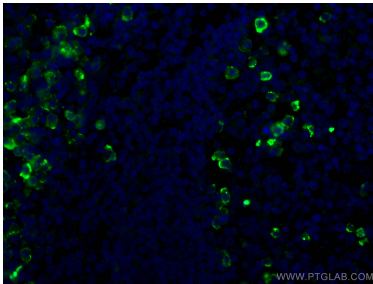
Immunohistochemical analysis of paraffin-embedded human tonsillitis tissue slide using 67155-1-Ig (SDC1,CD138 antibody) at dilution of 1:8000 (under 10x lens). Heat mediated antigen retrieval with Tris-EDTA buffer (pH 9.0). This data was developed using the same antibody clone with 67155-1-PBS in a different storage buffer formulation.



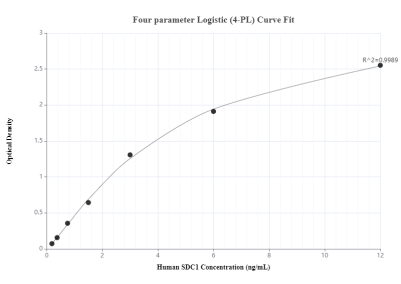
Immunohistochemical analysis of paraffin-embedded human tonsillitis tissue slide using 67155-1-Ig (SDC1,CD138 antibody) at dilution of 1:8000 (under 40x lens). Heat mediated antigen retrieval with Tris-EDTA buffer (pH 9.0). This data was developed using the same antibody clone with 67155-1-PBS in a different storage buffer formulation.



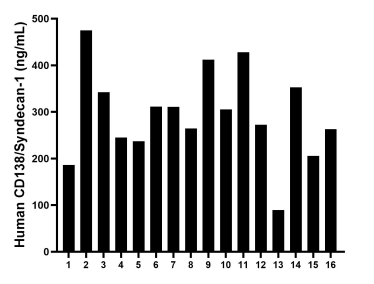
Immunofluorescent analysis of (4% PFA) fixed human tonsillitis tissue using CD138/Syndecan-1 antibody (67155-1-Ig, Clone: 4F3A8) at dilution of 1:400 and CoraLite®488-Conjugated AffiniPure Goat Anti-Mouse IgG(H+L). This data was developed using the same antibody clone with 67155-1-PBS in a different storage buffer formulation.



Immunofluorescent analysis of (4% PFA) fixed human tonsillitis tissue using CD138/Syndecan-1 antibody (67155-1-Ig, Clone: 4F3A8) at dilution of 1:400 and CoraLite®488-Conjugated AffiniPure Goat Anti-Mouse IgG(H+L). This data was developed using the same antibody clone with 67155-1-PBS in a different storage buffer formulation.



Sandwich ELISA standard curve of MP50044-1, SDC1,CD138 Monoclonal Matched Antibody Pair, PBS Only. Capture antibody: 60185-1-PBS. Detection antibody: 67155-1-PBS. Standard: Ag17733. Range: 0.188-12 ng/mL



Plasma of sixteen individual healthy human donors was measured. The CD138/Syndecan-1 concentration of detected samples was determined to be 293.79 ng/mL with a range of 89.65-474.60 ng/mL