

# FGL2 Monoclonal antibody

Catalog Number: 67152-1-Ig **2 Publications**

## Basic Information

**Catalog Number:**

67152-1-Ig

**Size:**

1700 µg/ml

**Source:**

Mouse

**Isotype:**

IgG2b

**Immunogen Catalog Number:**

AG28619

**GenBank Accession Number:**

BC017813

**GeneID (NCBI):**

10875

**UNIPROT ID:**

Q14314

**Full Name:**

fibrinogen-like 2

**Calculated MW:**

50 kDa

**Observed MW:**

70 kDa

**Purification Method:**

Protein A purification

**CloneNo.:**

2C9C5

**Recommended Dilutions:**

WB 1:2000-1:10000

IF-P 1:200-1:800

## Applications

**Tested Applications:**

IF-P, WB, ELISA

**Cited Applications:**

WB

**Species Specificity:**

Human, mouse

**Cited Species:**

human, mouse

**Positive Controls:**

WB : THP-1 cells, Jurkat cells

IF-P : mouse spleen tissue,

## Background Information

FGL2 (fibrinogen like protein 2) is a 70 kDa glycoprotein that belongs to the fibrinogen-related superfamily of proteins which are involved in coagulation, cell adhesion, and transendothelial migration. FGL2 is an important immune regulator of both innate and adaptive response. It is present on the surface of macrophages and endothelial cells, and can be constitutively secreted by CD4<sup>+</sup> CD8<sup>+</sup> T cell. FGL2 forms a tetrameric complex which is stabilized by interchain disulfide bonds and it exerts immunosuppressive effects on both T cell proliferation and dendritic cell maturation. The protein may play a role in physiologic functions at mucosal sites.

## Notable Publications

Author	Pubmed ID	Journal	Application
Tongguan Tian	37938970	Cell Rep	WB
Mingen Lin	37115693	J Clin Invest	WB

## Storage

**Storage:**

Store at -20°C. Stable for one year after shipment.

**Storage Buffer:**

PBS with 0.02% sodium azide and 50% glycerol pH 7.3.

Aliquoting is unnecessary for -20°C storage

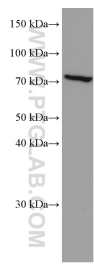
For technical support and original validation data for this product please contact:

T: 4006900926

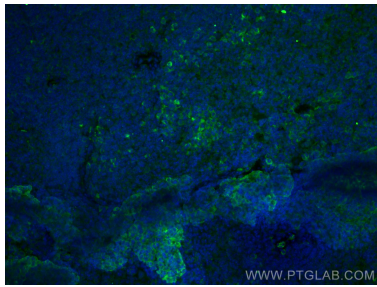
E: [Proteintech-CN@ptglab.com](mailto:Proteintech-CN@ptglab.com)W: [ptgcn.com](http://ptgcn.com)

This product is exclusively available under Proteintech Group brand and is not available to purchase from any other manufacturer.

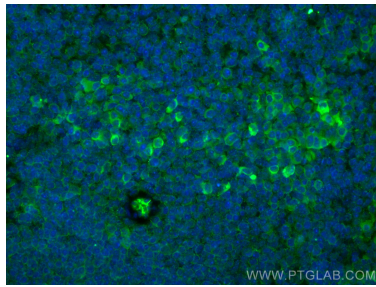
## Selected Validation Data



THP-1 cells were subjected to SDS PAGE followed by western blot with 67152-1-Ig (FGL2 antibody) at dilution of 1:5000 incubated at room temperature for 1.5 hours.



Immunofluorescent analysis of (4% PFA) fixed mouse spleen tissue using FGL2 antibody (67152-1-Ig, Clone: 2C9C5 ) at dilution of 1:400 and CoraLite®488-Conjugated AffiniPure Goat Anti-Mouse IgG(H+L).



Immunofluorescent analysis of (4% PFA) fixed mouse spleen tissue using FGL2 antibody (67152-1-Ig, Clone: 2C9C5 ) at dilution of 1:400 and CoraLite®488-Conjugated AffiniPure Goat Anti-Mouse IgG(H+L).