

For Research Use Only

# CDC25B Monoclonal antibody

Catalog Number: 67145-1-Ig **1 Publications**



## Basic Information

<b>Catalog Number:</b> 67145-1-Ig	<b>GenBank Accession Number:</b> BC006395	<b>Purification Method:</b> Protein A purification
<b>Size:</b> 1600 ug/ml	<b>GeneID (NCBI):</b> 994	<b>CloneNo.:</b> 1H3A4
<b>Source:</b> Mouse	<b>UNIPROT ID:</b> P30305	<b>Recommended Dilutions:</b> WB 1:5000-1:50000 IHC 1:1000-1:4000 IF/ICC 1:200-1:800
<b>Isotype:</b> IgG2b	<b>Full Name:</b> cell division cycle 25 homolog B (S. pombe)	
<b>Immunogen Catalog Number:</b> AG27193	<b>Calculated MW:</b> 65 kDa	
	<b>Observed MW:</b> 69 kDa	

## Applications

<b>Tested Applications:</b> WB, IHC, IF/ICC, ELISA	<b>Positive Controls:</b> WB : Sp2/O cells, Jurkat cells, U-937 cells IHC : human skin cancer tissue, IF/ICC : Jurkat cells,
<b>Cited Applications:</b> WB, IF	
<b>Species Specificity:</b> human, mouse	
<b>Cited Species:</b> human, mouse	
<b>Note-IHC: suggested antigen retrieval with TE buffer pH 9.0; (*) Alternatively, antigen retrieval may be performed with citrate buffer pH 6.0</b>	

## Background Information

CDC25B, also named as CDC25HU2, belongs to the MPI phosphatase family. It is a tyrosine protein phosphatase which functions as a dosage-dependent inducer of mitotic progression. CDC25B directly dephosphorylates CDK1 and stimulates its kinase activity. The three isoforms seem to have a different level of activity.

## Notable Publications

Author	Pubmed ID	Journal	Application
Zhuo Han	39406751	Nat Commun	WB,IF

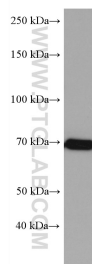
## Storage

**Storage:**  
Store at -20°C. Stable for one year after shipment.  
**Storage Buffer:**  
PBS with 0.02% sodium azide and 50% glycerol pH 7.3.  
Aliquoting is unnecessary for -20°C storage

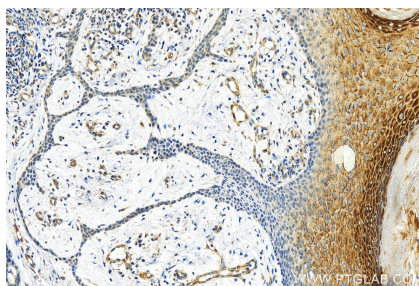
For technical support and original validation data for this product please contact:  
T: 4006900926 E: Proteintech-CN@ptglab.com W: ptgcn.com

This product is exclusively available under Proteintech Group brand and is not available to purchase from any other manufacturer.

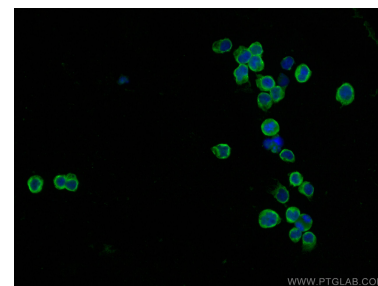
## Selected Validation Data



Sp2/0 cells were subjected to SDS PAGE followed by western blot with 67145-1-Ig (CDC25B antibody) at dilution of 1:10000 incubated at room temperature for 1.5 hours.



Immunohistochemical analysis of paraffin-embedded skin cancer slide using 67145-1-Ig (CDC25B antibody) at dilution of 1:2000 (under 20x lens). Heat mediated antigen retrieval with Tris-EDTA buffer (pH 9.0).



Immunofluorescent analysis of (4% PFA) fixed Jurkat cells using CDC25B antibody (67145-1-Ig, Clone: 1H3A4 ) at dilution of 1:400 and CoraLite®488-Conjugated AffiniPure Goat Anti-Mouse IgG(H+L).