

For Research Use Only

# TCF3 Monoclonal antibody

Catalog Number: 67140-1-Ig

Featured Product

3 Publications



## Basic Information

Catalog Number:

67140-1-Ig

Size:

1900  $\mu$ g/ml

Source:

Mouse

Isotype:

IgG2b

Immunogen Catalog Number:

AG15734

GenBank Accession Number:

BC110580

GeneID (NCBI):

6929

UNIPROT ID:

P15923

Full Name:

transcription factor 3 (E2A  
immunoglobulin enhancer binding  
factors E12/E47)

Calculated MW:

654 aa, 68 kDa

Observed MW:

68-70 kDa

Purification Method:

Protein A purification

CloneNo.:

1D12E5

Recommended Dilutions:

WB 1:2000-1:10000

IF/ICC 1:200-1:800

## Applications

Tested Applications:

IF/ICC, WB, ELISA

Cited Applications:

WB, IHC

Species Specificity:

Human

Cited Species:

human

Positive Controls:

WB : HepG2 cells, NCI-H1299 cells, PC-3 cells, Jurkat  
cells, K-562 cells, THP-1 cells, A549 cells

IF/ICC : HepG2 cells,

## Background Information

### Notable Publications

Author	Pubmed ID	Journal	Application
Xiong Shu	36047666	Cancer Med	WB
Xiao-Wei Wei	35239510	Reproduction	WB
Nian Zhou	34278464	Mol Med Rep	WB,IHC

## Storage

Storage:

Store at -20°C. Stable for one year after shipment.

Storage Buffer:

PBS with 0.02% sodium azide and 50% glycerol pH 7.3.

Aliquoting is unnecessary for -20°C storage

For technical support and original validation data for this product please contact:

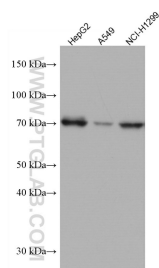
T: 4006900926

E: Proteintech-CN@ptglab.com

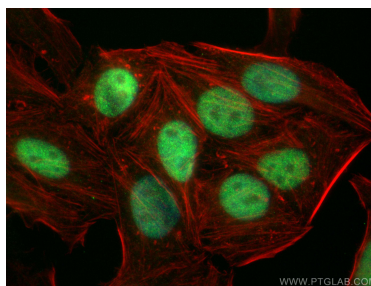
W: ptgcn.com

This product is exclusively available under Proteintech Group brand and is not available to purchase from any other manufacturer.

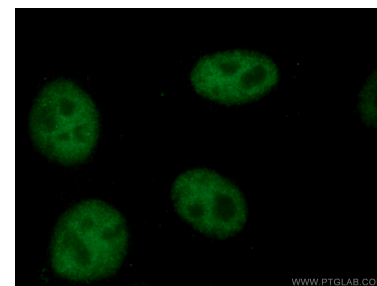
## Selected Validation Data



Various lysates were subjected to SDS PAGE followed by western blot with 67140-1-Ig (TCF3 antibody) at dilution of 1:5000 incubated at room temperature for 1.5 hours.



Immunofluorescent analysis of (4% PFA) fixed HepG2 cells using TCF3 antibody (67140-1-Ig, Clone: 1D12E5 ) at dilution of 1:400 and CoraLite®488-Conjugated AffiniPure Goat Anti-Mouse IgG(H+L), CL594-phalloidin (red).



Immunofluorescent analysis of (4% PFA) fixed HepG2 cells using 67140-1-Ig (TCF3 antibody) at dilution of 1:100 and CoraLite®488-Conjugated AffiniPure Goat Anti-Mouse IgG(H+L).