

ELF1 Monoclonal antibody

Catalog Number: 67138-1-Ig

Basic Information

Catalog Number:

67138-1-Ig

Size:

2100 µg/ml

Source:

Mouse

Isotype:

IgG1

Immunogen Catalog Number:

AG14689

GenBank Accession Number:

BC030507

GeneID (NCBI):

1997

UNIPROT ID:

P32519

Full Name:

E74-like factor 1 (ets domain transcription factor)

Calculated MW:

619 aa, 67 kDa

Observed MW:

93-97 kDa

Purification Method:

Protein A purification

CloneNo.:

2D4A11

Recommended Dilutions:

WB 1:1000-1:6000

Applications

Tested Applications:

WB, ELISA

Species Specificity:

Human

Positive Controls:

WB: Jurkat cells, A431 cells, PC-3 cells, HL-60 cells, Ramos cells

Background Information

ELF1, also named as ETS-related transcription factor Elf-1, is originally cloned from a human T-cell cDNA library by hybridization with a probe encoding the DNA binding domain (ETS domain) of the human Ets-1 cDNA. Based on its preferential expression in embryonic lymphoid organs (thymus and spleen), a wide variety of epithelial cells and fetal liver as well as in adult haematopoietic tissues, including thymus, spleen and bone marrow, Elf-1 emerged as a potential key regulator of haematopoietic gene expression. Consistent with this notion, Elf-1 has been shown to be a direct upstream regulator of genes important for haematopoiesis such as Scl, Fli-1, Lyl-1, Runx1 and Lmo2. Elf-1 has also been shown to be important for blood vessel development, a process that is closely linked to early haematopoiesis during embryonic development. Elf-1 has been reported to take part in the transcriptional control of major regulators of blood vessel development such as Tie1, Tie2, angiopoietin-2, the vascular endothelial growth factor receptor 1 (VEGFR1), the endothelial nitric-oxide synthase (eNOS) and endoglin. Functional activity of Ets proteins is modulated at multiple levels. It is known that ELF-1 appears in the cytoplasm as a 80 kDa protein that is O-glycosylated and phosphorylated in order to be translocated into the nucleus where it can be detected as a 98 kDa protein. After dephosphorylation, the protein is degraded through the proteasome pathway. The inactive form of Elf-1 is an 80-kDa protein that lacks DNA-binding activity and is confined to the cytoplasm of the cell. Phosphorylation and O-linked glycosylation increase the molecular weight of Elf-1 to 98 kDa, the active form; 98 kDa Elf-1 binds to the promoter of the gene that codes for CD3 ζ inducing its transcription.

Storage

Storage:

Store at -20°C. Stable for one year after shipment.

Storage Buffer:

PBS with 0.02% sodium azide and 50% glycerol pH 7.3.

Aliquoting is unnecessary for -20°C storage

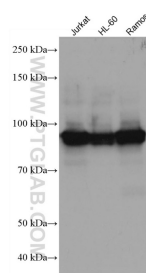
For technical support and original validation data for this product please contact:

T: 4006900926

E: Proteintech-CN@ptglab.comW: ptgcn.com

This product is exclusively available under Proteintech Group brand and is not available to purchase from any other manufacturer.

Selected Validation Data



Various lysates were subjected to SDS PAGE followed by western blot with 67138-1-Ig (ELF1 antibody) at dilution of 1:3000 incubated at room temperature for 1.5 hours.