

For Research Use Only

CD33 Monoclonal antibody

Catalog Number: 67135-1-Ig



Basic Information

Catalog Number: 67135-1-Ig	GenBank Accession Number: BC028152	Purification Method: Protein A purification
Size: 2000 µg/ml	GeneID (NCBI): 945	CloneNo.: 1B2E5
Source: Mouse	UNIPROT ID: P20138	Recommended Dilutions: WB 1:1000-1:6000 IHC 1:500-1:2000 IF 1:200-1:800
Isotype: IgG2a	Full Name: CD33 molecule	
Immunogen Catalog Number: AG11402	Calculated MW: 364 aa, 40 kDa	
	Observed MW: 67-70 kDa	

Applications

Tested Applications:
IF/ICC, IHC, WB, ELISA

Species Specificity:
Human

Note-IHC: suggested antigen retrieval with TE buffer pH 9.0; (*) Alternatively, antigen retrieval may be performed with citrate buffer pH 6.0

Positive Controls:

WB : THP-1 cells, HL-60 cells

IHC : human spleen tissue,

IF : THP-1 cells,

Background Information

CD33, also referred to as Siglec-3, is a 67-kDa glycosylated transmembrane protein of sialic acid-binding immunoglobulin-like lectin (siglec) family. CD33 is expressed on monocytes, myeloid progenitors, granulocytes, mast cells, some T cells. It may mediate cell-to-cell adhesion and act as a receptor that inhibits the proliferation of normal and leukemic myeloid cells.

Storage

Storage:

Store at -20°C. Stable for one year after shipment.

Storage Buffer:

PBS with 0.02% sodium azide and 50% glycerol pH 7.3.

Aliquoting is unnecessary for -20°C storage

For technical support and original validation data for this product please contact:

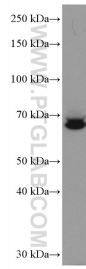
T: 4006900926

E: Proteintech-CN@ptglab.com

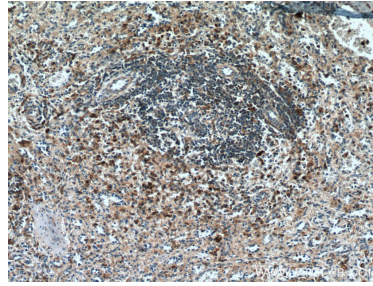
W: ptgcn.com

This product is exclusively available under Proteintech Group brand and is not available to purchase from any other manufacturer.

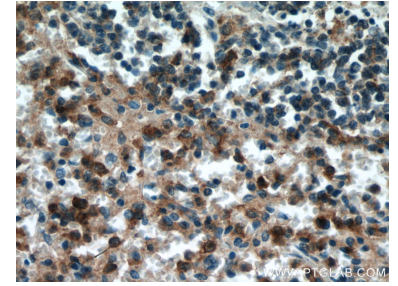
Selected Validation Data



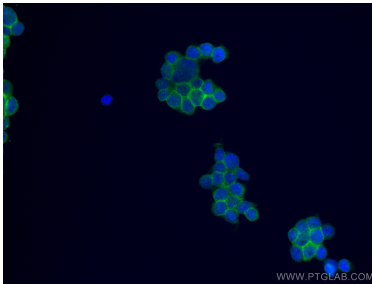
THP-1 cells were subjected to SDS PAGE followed by western blot with 67135-1-Ig (CD33 antibody) at dilution of 1:3000 incubated at room temperature for 1.5 hours.



Immunohistochemical analysis of paraffin-embedded human spleen tissue slide using 67135-1-Ig (CD33 antibody) at dilution of 1:1000 (under 10x lens). Heat mediated antigen retrieval with Tris-EDTA buffer (pH 9.0).



Immunohistochemical analysis of paraffin-embedded human spleen tissue slide using 67135-1-Ig (CD33 antibody) at dilution of 1:1000 (under 40x lens). Heat mediated antigen retrieval with Tris-EDTA buffer (pH 9.0).



Immunofluorescent analysis of (4% PFA) fixed THP-1 cells using CD33 antibody (67135-1-Ig, Clone: 1B2E5) at dilution of 1:400 and CoraLite®488-Conjugated AffiniPure Goat Anti-Mouse IgG(H+L).