

For Research Use Only

Filamin A Monoclonal antibody

Catalog Number: 67133-1-Ig **13 Publications**



Basic Information

Catalog Number: 67133-1-Ig	GenBank Accession Number: BC014654	Purification Method: Protein A purification
Source: Mouse	GeneID (NCBI): 2316	CloneNo.: 1G4H3
Isotype: IgG2a	UNIPROT ID: P21333	Recommended Dilutions: WB: 1:5000-1:50000 IHC: 1:500-1:2000 IF/ICC: 1:200-1:800
Immunogen Catalog Number: AG23291	Full Name: filamin A, alpha (actin binding protein 280)	
	Calculated MW: 2647 aa, 280 kDa	
	Observed MW: 280 kDa	

Applications

Tested Applications: WB, IHC, IF/ICC, ELISA	Positive Controls:
Cited Applications: WB, IHC, IF	WB : A549 cells, HEK-293 cells, MCF-7 cells, human skeletal muscle tissue, U2OS cells, HeLa cells, HepG2 cells, Jurkat cells, K-562 cells, A431 cells
Species Specificity: human	IHC : human cervical cancer tissue, human breast cancer tissue
Cited Species: human, mouse	IF/ICC : HeLa cells,
Note-IHC: suggested antigen retrieval with TE buffer pH 9.0; (*) Alternatively, antigen retrieval may be performed with citrate buffer pH 6.0	

Background Information

FLNA encodes a 280 kDa widely expressed actin binding protein called filamin A which can crosslinks actin filaments and links actin filaments to membrane glycoproteins to form a three-dimensional network (PMID:29931263). And filamin A could interact with many other proteins, involved in receptor activation, cell migration and adhesion, cell proliferation, inflammation and tumorigenesis, studies have been reported that FLNA overexpressed in multiple types of tumors, suggesting FLNA may involved in cancer aggressiveness (PMID:29100390). What's more, FLNA is an causative gene of periventricular nodular heterotopia (PNH) (PMID: 29062687)

Notable Publications

Author	Pubmed ID	Journal	Application
Min Liu	34262899	Front Cell Dev Biol	WB, IF
Damiano Cosimo Rigracciolo	35655319	J Exp Clin Cancer Res	IF
Wenwen Chen	32665550	Cell Death Dis	WB

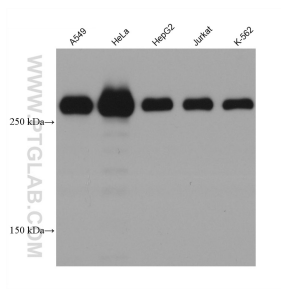
Storage

Storage:
Store at -20°C. Stable for one year after shipment.
Storage Buffer:
PBS with 0.02% sodium azide and 50% glycerol, pH7.3
Aliquoting is unnecessary for -20°C storage

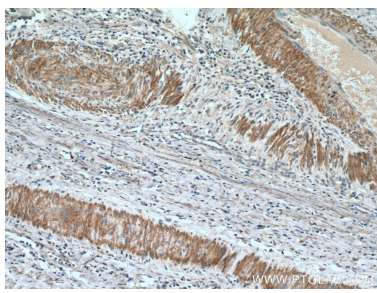
For technical support and original validation data for this product please contact:
T: 4006900926 E: Proteintech-CN@ptglab.com W: ptgcn.com

This product is exclusively available under Proteintech Group brand and is not available to purchase from any other manufacturer.

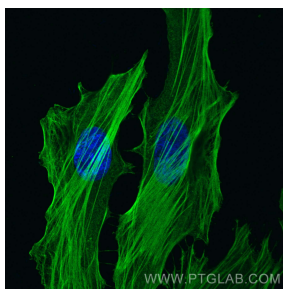
Selected Validation Data



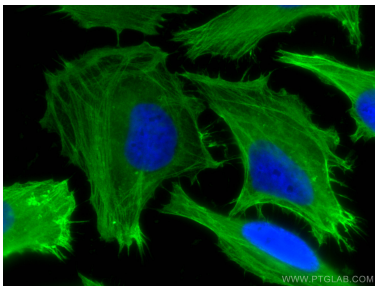
Various lysates were subjected to SDS PAGE followed by western blot with 67133-1-Ig (Filamin A antibody) at dilution of 1:20000 incubated at room temperature for 1.5 hours.



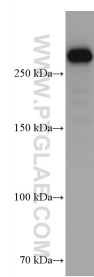
Immunohistochemical analysis of paraffin-embedded human cervical cancer tissue slide using 67133-1-Ig (Filamin A antibody) at dilution of 1:1000 (under 10x lens). Heat mediated antigen retrieval with Tris-EDTA buffer (pH 9.0).



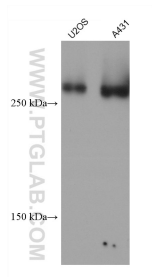
Immunofluorescent analysis of (-20°C Methanol) fixed HeLa cells using Filamin A antibody (67133-1-Ig, Clone: 1G4H3) at dilution of 1:800 and CoraLite®488-Conjugated AffiniPure Goat Anti-Mouse IgG(H+L).



Immunofluorescent analysis of (-20°C Ethanol) fixed HeLa cells using Filamin A antibody (67133-1-Ig, Clone: 1G4H3) at dilution of 1:400 and CoraLite®488-Conjugated AffiniPure Goat Anti-Mouse IgG(H+L).



MCF-7 cells were subjected to SDS PAGE followed by western blot with 67133-1-Ig (Filamin A antibody) at dilution of 1:10000 incubated at room temperature for 1.5 hours.



Various lysates were subjected to SDS PAGE followed by western blot with 67133-1-Ig (Filamin A antibody) at dilution of 1:20000 incubated at room temperature for 1.5 hours.