

FSH beta Monoclonal antibody

Catalog Number: 67131-1-Ig

Basic Information

Catalog Number: 67131-1-Ig	GenBank Accession Number: BC113488	Purification Method: Protein A purification
Concentration: 2100 ug/ml	GeneID (NCBI): 2488	CloneNo.: 1B10A11
Source: Mouse	UNIPROT ID: P01225	Recommended Dilutions: IHC 1:500-1:2000 IF/ICC 1:200-1:800
Isotype: IgG2b	Full Name: follicle stimulating hormone, beta polypeptide	
Immunogen Catalog Number: AG13788	Calculated MW: 129 aa, 15 kDa	

Applications

Tested Applications: IHC, IF/ICC, ELISA	Positive Controls:
Species Specificity: human	IHC : human pituitary tissue, human pituitary adenoma tissue
Note-IHC: suggested antigen retrieval with TE buffer pH 9.0 ; (*) Alternatively, antigen retrieval may be performed with citrate buffer pH 6.0	IF/ICC : HepG2 cells,

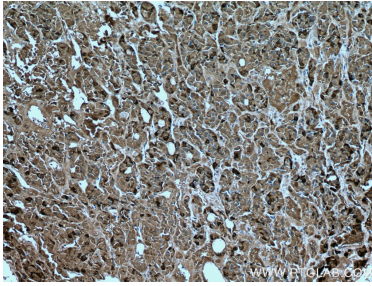
Background Information

The FSHB gene encodes the beta subunit of follicle-stimulating hormone (FSH), particularly expressed in gonadotroph cells within the anterior pituitary gland and plays a critical role in the regulation of gonadal function, pubertal maturation and reproductive processes in mammals. The transcription of the FSHB gene is critical for the production of the FSH hormone (PMID:28281143). And FSH is required for ovarian folliculogenesis in females, in males it promotes spermatogenesis in conjunction with testosterone (PMID:11739331). Mutations in FSHB gene would result in infertility both in men and women (PMID: 23766128).

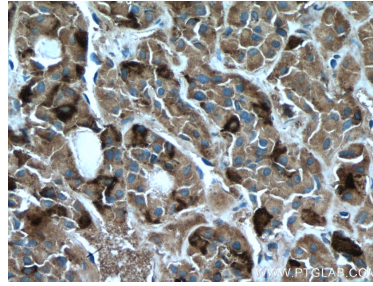
Storage

Storage:
Store at -20°C. Stable for one year after shipment.
Storage Buffer:
PBS with 0.02% sodium azide and 50% glycerol, pH7.3
Aliquoting is unnecessary for -20°C storage

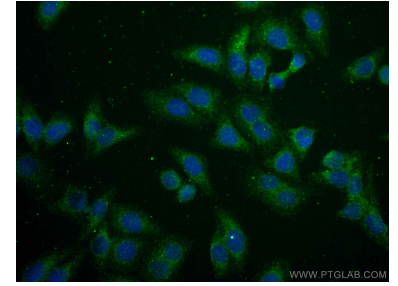
Selected Validation Data



Immunohistochemical analysis of paraffin-embedded human pituitary tissue slide using 67131-1-Ig (FSH beta antibody) at dilution of 1:1000 (under 10x lens. Heat mediated antigen retrieval with Tris-EDTA buffer (pH 9.0).



Immunohistochemical analysis of paraffin-embedded human pituitary tissue slide using 67131-1-Ig (FSHB antibody) at dilution of 1:1000 (under 40x lens. Heat mediated antigen retrieval with Tris-EDTA buffer (pH 9.0).



Immunofluorescent analysis of (-20°C Ethanol) fixed HepG2 cells using FSH beta antibody (67131-1-Ig, Clone: 1B10A11) at dilution of 1:400 and CoraLite®488-Conjugated AffiniPure Goat Anti-Mouse IgG(H+L).