

INA Monoclonal antibody

Catalog Number: 67120-1-Ig

Basic Information

Catalog Number:

67120-1-Ig

Size:

2000 µg/ml

Source:

Mouse

Isotype:

IgG2a

Immunogen Catalog Number:

AG13655

GenBank Accession Number:

BC006359

GeneID (NCBI):

9118

UNIPROT ID:

Q16352

Full Name:

internexin neuronal intermediate

filament protein, alpha

Calculated MW:

55 kDa

Observed MW:

60-66 kDa

Purification Method:

Protein A purification

CloneNo.:

3C12A8

Recommended Dilutions:

WB 1:1000-1:6000

IHC 1:300-1:1200

Applications

Tested Applications:

IHC, WB, ELISA

Species Specificity:

Human, Mouse, Rat, Pig

Note-IHC: suggested antigen retrieval with TE buffer pH 9.0; (*) Alternatively, antigen retrieval may be performed with citrate buffer pH 6.0

Positive Controls:

WB : fetal human brain tissue, rat cerebellum tissue, pig brain tissue, rat brain tissue, mouse brain tissue

IHC : human pancreas cancer tissue,

Background Information

INA, also named as Alpha internexin, is a 66 kDa intermediate filament protein which is involved in the morphogenesis of neurons. INA is mainly expressed in various kinds of central and peripheral neurons from early development and highly expressed in neurodegenerative and neuronal death cells. The MW of INA ranges from 60 kDa in human, pig and mouse to 66 kDa in rat.(PMID: 29940892, 2201753)

Storage

Storage:

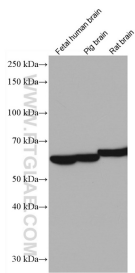
Store at -20°C. Stable for one year after shipment.

Storage Buffer:

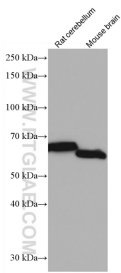
PBS with 0.02% sodium azide and 50% glycerol pH 7.3.

Aliquoting is unnecessary for -20°C storage

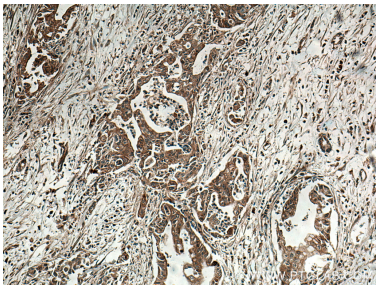
Selected Validation Data



Various lysates were subjected to SDS PAGE followed by western blot with 67120-1-Ig (INA antibody) at dilution of 1:3000 incubated at room temperature for 1.5 hours.



Various lysates were subjected to SDS PAGE followed by western blot with 67120-1-Ig (INA antibody) at dilution of 1:3000 incubated at room temperature for 1.5 hours.



Immunohistochemical analysis of paraffin-embedded human pancreas cancer tissue slide using 67120-1-Ig (INA antibody) at dilution of 1:600 (under 10x lens. Heat mediated antigen retrieval with Tris-EDTA buffer (pH 9.0).