

For Research Use Only

PKC Delta Monoclonal antibody

Catalog Number: 67113-1-Ig **1 Publications**



Basic Information

Catalog Number:

67113-1-Ig

Size:

2300 μ g/ml

Source:

Mouse

Isotype:

IgG2b

Immunogen Catalog Number:

AG5631

GenBank Accession Number:

BC043350

GeneID (NCBI):

5580

UNIPROT ID:

Q05655

Full Name:

protein kinase C, delta

Calculated MW:

78 kDa

Observed MW:

78-80 kDa

Purification Method:

Protein A purification

CloneNo.:

2B3E3

Recommended Dilutions:

WB 1:5000-1:20000

Applications

Tested Applications:

WB, ELISA

Cited Applications:

WB

Species Specificity:

Human, mouse, rat

Cited Species:

mouse

Positive Controls:

WB : HeLa cells, HepG2 cells, A431 cells, MCF-7 cells, Jurkat cells, HSC-T6 cells, NIH/3T3 cells

Background Information

Notable Publications

Author	Pubmed ID	Journal	Application
Yunying Yang	39174646	Cell Death Differ	WB

Storage

Storage:

Store at -20°C.

Storage Buffer:

PBS with 0.02% sodium azide and 50% glycerol pH 7.3.

Aliquoting is unnecessary for -20°C storage

For technical support and original validation data for this product please contact:

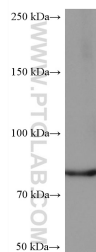
T: 4006900926

E: Proteintech-CN@ptglab.com

W: ptgcn.com

This product is exclusively available under Proteintech Group brand and is not available to purchase from any other manufacturer.

Selected Validation Data



HeLa cells were subjected to SDS PAGE followed by western blot with 67113-1-Ig (PKC delta antibody) at dilution of 1:20000 incubated at room temperature for 1.5 hours.