

For Research Use Only

CYP3A4 Monoclonal antibody, PBS Only (Detector)

Catalog Number: 67110-1-PBS



Basic Information

Catalog Number:	67110-1-PBS	GenBank Accession Number:	BC101631	Purification Method:	Protein A purification
Size:	1000 µg/ml	GeneID (NCBI):	1576	CloneNo.:	2F11C4
Source:	Mouse	UNIPROT ID:	P08684		
Isotype:	IgG1	Full Name:	cytochrome P450, family 3, subfamily A, polypeptide 4		
Immunogen Catalog Number:	AG13074	Calculated MW:	503 aa, 57 kDa		
		Observed MW:	51-57 kDa		

Applications

Tested Applications:
WB, IHC, IF/ICC, IF-P, Cytometric bead array, Indirect ELISA

Species Specificity:
human, mouse, rat, pig

Background Information

Storage

Storage:
Store at -80°C.
The product is shipped with ice packs. Upon receipt, store it immediately at -80°C

Storage Buffer:
PBS Only

For technical support and original validation data for this product please contact:

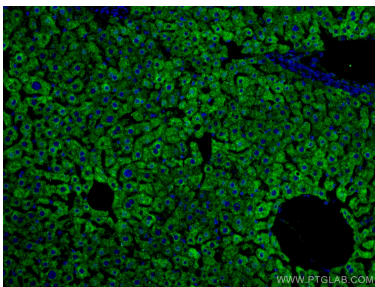
T: 4006900926

E: Proteintech-CN@ptglab.com

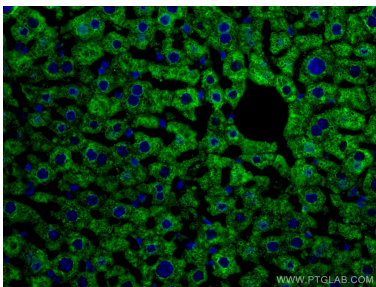
W: ptgcn.com

This product is exclusively available under Proteintech Group brand and is not available to purchase from any other manufacturer.

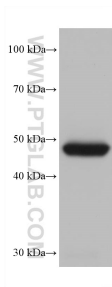
Selected Validation Data



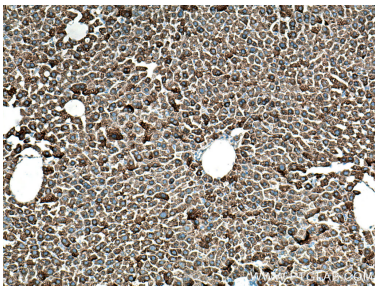
Immunofluorescent analysis of (4% PFA) fixed mouse liver tissue using CYP3A4 antibody (67110-1-Ig, Clone: 2F11C4) at dilution of 1:400 and CoraLite®488-Conjugated AffiniPure Goat Anti-Mouse IgG(H+L). This data was developed using the same antibody clone with 67110-1-PBS in a different storage buffer formulation.



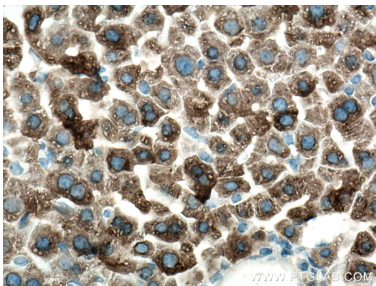
Immunofluorescent analysis of (4% PFA) fixed mouse liver tissue using CYP3A4 antibody (67110-1-Ig, Clone: 2F11C4) at dilution of 1:400 and CoraLite®488-Conjugated AffiniPure Goat Anti-Mouse IgG(H+L). This data was developed using the same antibody clone with 67110-1-PBS in a different storage buffer formulation.



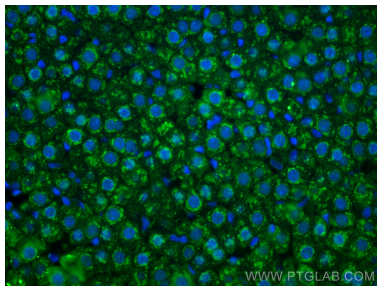
mouse liver tissue were subjected to SDS PAGE followed by western blot with 67110-1-Ig (CYP3A4 antibody) at dilution of 1:20000 incubated at room temperature for 1.5 hours. This data was developed using the same antibody clone with 67110-1-PBS in a different storage buffer formulation.



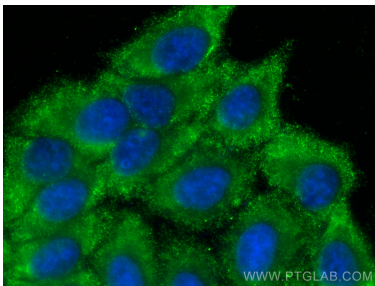
Immunohistochemical analysis of paraffin-embedded mouse liver tissue slide using 67110-1-Ig (CYP3A4 antibody) at dilution of 1:600 (under 10x lens). Heat mediated antigen retrieval with Tris-EDTA buffer (pH 9.0). This data was developed using the same antibody clone with 67110-1-PBS in a different storage buffer formulation.



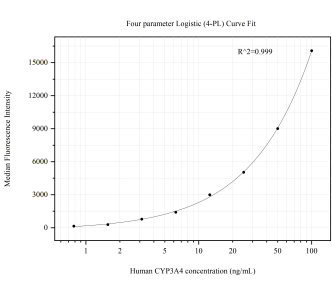
Immunohistochemical analysis of paraffin-embedded mouse liver tissue slide using 67110-1-Ig (CYP3A4 antibody) at dilution of 1:600 (under 40x lens). Heat mediated antigen retrieval with Tris-EDTA buffer (pH 9.0). This data was developed using the same antibody clone with 67110-1-PBS in a different storage buffer formulation.



Immunofluorescent analysis of (4% PFA) fixed rat liver tissue using CYP3A4 antibody (67110-1-Ig, Clone: 2F11C4) at dilution of 1:1000 and CoraLite®488-Conjugated AffiniPure Goat Anti-Mouse IgG(H+L). This data was developed using the same antibody clone with 67110-1-PBS in a different storage buffer formulation.



Immunofluorescent analysis of (-20°C Ethanol) fixed HepG2 cells using CYP3A4 antibody (67110-1-Ig, Clone: 2F11C4) at dilution of 1:800 and CoraLite®488-Conjugated Goat Anti-Mouse IgG(H+L) (SA00013-1). This data was developed using the same antibody clone with 67110-1-PBS in a different storage buffer formulation.



Cytometric bead array standard curve of MP50718-4, CYP3A4 Monoclonal Matched Antibody Pair, PBS Only. Capture antibody: 67110-6-PBS. Detection antibody: 67110-1-PBS. Standard:Ag13074. Range: 0.781-100 ng/mL.