

For Research Use Only

# IDE Monoclonal antibody, PBS Only

Catalog Number: 67106-1-PBS

Featured Product



## Basic Information

Catalog Number:

67106-1-PBS

Concentration:

1mg/ml

Source:

Mouse

Isotype:

IgG2b

Immunogen Catalog Number:

AG17161

GenBank Accession Number:

BC096336

GeneID (NCBI):

3416

UNIPROT ID:

P14735

Full Name:

Abeta degrading protease

Calculated MW:

1019 aa, 118 kDa

Observed MW:

100-120 kDa

Purification Method:

Protein A purification

CloneNo.:

3E10G1

## Applications

Tested Applications:

WB, IHC, Indirect ELISA

Species Specificity:

human, mouse, rat

## Background Information

IDE(INS-degrading enzyme) belongs to the peptidase M16 family. It is also known as insulysin and is a 110-kD neutral metallopeptidase that can degrade a number of peptides, including INS and beta-amyloid(PMID:9830016). The reduction of IDE expression may be a risk factor for AD, and that IDE may interact with APOE status to affect beta-amyloid metabolism(PMID:12507914). It can exist as a homodimer and form higher oligomers(PMID:17613531).

## Storage

Storage:

Store at -80°C.

The product is shipped with ice packs. Upon receipt, store it immediately at -80°C

Storage Buffer:

PBS Only

For technical support and original validation data for this product please contact:

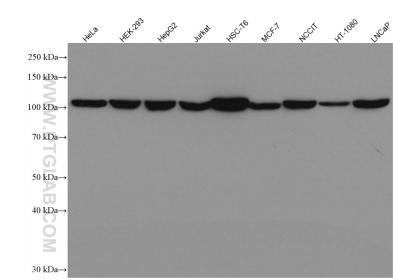
T: 4006900926

E: Proteintech-CN@ptglab.com

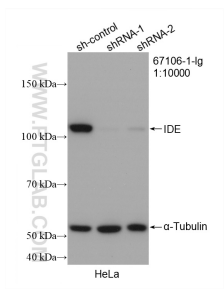
W: ptgcn.com

This product is exclusively available under Proteintech Group brand and is not available to purchase from any other manufacturer.

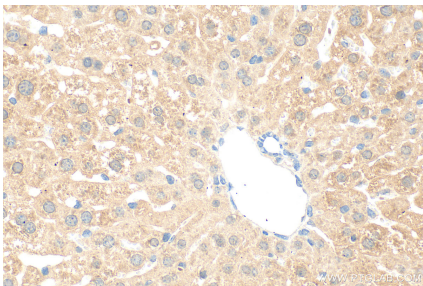
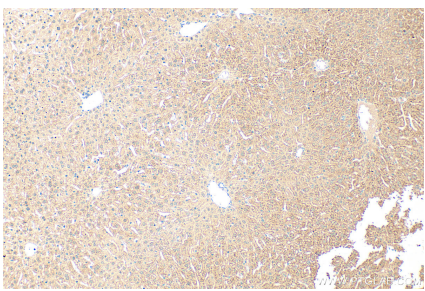
## Selected Validation Data



Various lysates were subjected to SDS PAGE followed by western blot with 67106-1-Ig (IDE antibody) at dilution of 1:10000 incubated at room temperature for 1.5 hours. This data was developed using the same antibody clone with 67106-1-PBS in a different storage buffer formulation.



WB result of IDE antibody (67106-1-Ig: 1:10000; incubated at room temperature for 1.5 hours) with sh-Control and sh-IDE transfected HeLa cells. This data was developed using the same antibody clone with 67106-1-PBS in a different storage buffer formulation.



Immunohistochemical analysis of paraffin-embedded mouse liver tissue slide using 67106-1-Ig (IDE antibody) at dilution of 1:1000 (under 40x lens). Heat mediated antigen retrieval with Tris-EDTA buffer (pH 9.0). This data was developed using the same antibody clone with 67106-1-PBS in a different storage buffer formulation.