

# MAD2L2 Monoclonal antibody

Catalog Number: 67100-1-Ig

## Basic Information

<b>Catalog Number:</b> 67100-1-Ig	<b>GenBank Accession Number:</b> BC015244	<b>Purification Method:</b> Protein A purification
<b>Size:</b> 1700 µg/ml	<b>GeneID (NCBI):</b> 10459	<b>CloneNo.:</b> 2A4C2
<b>Source:</b> Mouse	<b>UNIPROT ID:</b> Q9UI95	<b>Recommended Dilutions:</b> WB 1:5000-1:20000 IHC 1:500-1:2000
<b>Isotype:</b> IgG2b	<b>Full Name:</b> MAD2 mitotic arrest deficient-like 2 (yeast)	
<b>Immunogen Catalog Number:</b> AG28233	<b>Calculated MW:</b> 211 aa, 24 kDa	
	<b>Observed MW:</b> 24 kDa	

## Applications

**Tested Applications:**  
WB, IHC, FC (Intra), ELISA

**Species Specificity:**  
human, mouse, rat

**Note-IHC: suggested antigen retrieval with TE buffer pH 9.0; (\*) Alternatively, antigen retrieval may be performed with citrate buffer pH 6.0**

**Positive Controls:**

**WB :** HeLa cells, HEK-293 cells, MCF-7 cells, Jurkat cells, HSC-T6 cells, NIH/3T3 cells, 4T1 cells

**IHC :** human lymphoma tissue,

## Background Information

MAD family, together with BUB and Mps1, Cdc20k, play roles in the mitotic spindle checkpoint. MAD2L2 is one of the MAD family. It can mediate the second polymerase switching in translation DNA synthesis by mediating the interaction between the error-prone DNA polymerase zeta catalytic subunit REV3L and the inserter polymerase REV1. Through regulation of the JNK-mediate phosphorylation and activation of the transcriptional activator ELK1, MAD2L2 involves in cellular response to DNA damage. Also it has role in the progression of cell cycle and peithelial-mesenchymal transdifferentiation.

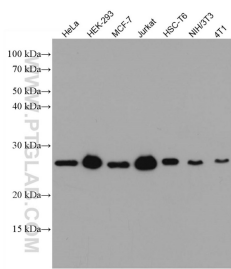
## Storage

**Storage:**  
Store at -20°C. Stable for one year after shipment.

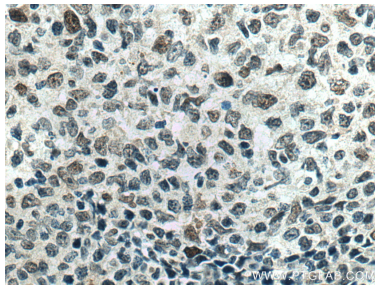
**Storage Buffer:**  
PBS with 0.02% sodium azide and 50% glycerol pH 7.3.

**Aliquoting is unnecessary for -20°C storage**

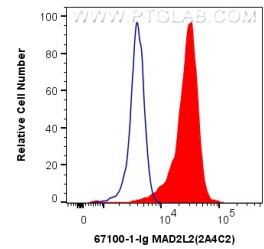
## Selected Validation Data



Various lysates were subjected to SDS PAGE followed by western blot with 67100-1-Ig (MAD2L2 antibody) at dilution of 1:20000 incubated at room temperature for 1.5 hours.



Immunohistochemical analysis of paraffin-embedded human lymphoma tissue slide using 67100-1-Ig (MAD2L2 antibody) at dilution of 1:1000 (under 40x lens). Heat mediated antigen retrieval with Tris-EDTA buffer (pH 9.0).



1X10<sup>6</sup> K-562 cells were intracellularly stained with 0.4 ug Anti-Human MAD2L2 (67100-1-Ig, Clone:2A4C2) and CoraLite® 488-Conjugated AffiniPure Goat Anti-Mouse IgG(H+L) at dilution 1:1000 (red), or 0.4 ug Mouse IgG2b Isotype Control (MPC-11) (65128-1-Ig, Clone: MPC-11) (blue). Cells were fixed and permeabilized with Transcription Factor Staining Buffer Kit (PF00011).