

ELAVL2 Monoclonal antibody, PBS Only (Capture)

Catalog Number: 67097-1-PBS

Basic Information

Catalog Number: 67097-1-PBS	GenBank Accession Number: BC030692	Purification Method: Protein G purification
Source: Mouse	GeneID (NCBI): 1993	CloneNo.: 2D8C10
Isotype: IgG1	UNIPROT ID: Q12926	
Immunogen Catalog Number: AG28310	Full Name: ELAV (embryonic lethal, abnormal vision, Drosophila)-like 2 (Hu antigen B)	
	Calculated MW: 39 kDa	
	Observed MW: 35-40 kDa	

Applications

Tested Applications:
WB, Cytometric bead array, Indirect ELISA

Species Specificity:
human, mouse, rat, pig, rabbit

Background Information

The ELAV (embryonic lethal abnormal visual system) gene of *D. Melanogaste* is the the first identified member of a family of neuronal RNA binding proteins that is conserved in metazoans. The proteins in this family contain three RNA Recognition Motifs (RRM), with a hinge region separating the second and third RRM and an optional non-conserved N-terminal region. The hinge includes signals essential for nuclear export and subcellular localization [PMID:9874760]. Elav is expressed specifically in the neurons and is required for the correct development and maintenance of the nervous system. ELAVL2 can binds RNA, and recognize a GAAA motif. In addition, it can bind to its own 3'-UTR, the FOS 3'-UTR and the ID 3'-UTR [PMID:18715504,21695151].

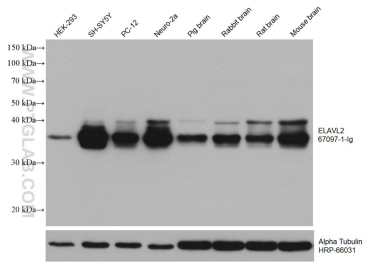
Storage

Storage:
Store at -80°C.

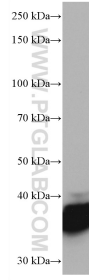
The product is shipped with ice packs. Upon receipt, store it immediately at -80°C

Storage Buffer:
PBS only, pH7.3

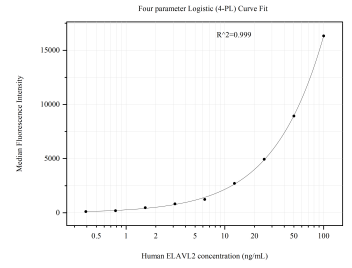
Selected Validation Data



Various lysates were subjected to SDS PAGE followed by western blot with 67097-1-Ig (ELAVL2 antibody) at dilution of 1:10000 incubated at room temperature for 1.5 hours. The membrane was stripped and reblotted with HRP-conjugated Alpha Tubulin Monoclonal antibody (HRP-66031) as loading control. This data was developed using the same antibody clone with 67097-1-PBS in a different storage buffer formulation.



Neuro-2a cells were subjected to SDS PAGE followed by western blot with 67097-1-Ig (ELAVL2 antibody) at dilution of 1:10000 incubated at room temperature for 1.5 hours. This data was developed using the same antibody clone with 67097-1-PBS in a different storage buffer formulation.



Cytometric bead array standard curve of MP50972-1, ELAVL2 Monoclonal Matched Antibody Pair, PBS Only. Capture antibody: 67097-1-PBS. Detection antibody: 67097-2-PBS. Standard:Ag28310. Range: 0.391-100 ng/mL