

For Research Use Only

# EIF3E Monoclonal antibody

Catalog Number: 67095-1-Ig **1 Publications**



## Basic Information

Catalog Number:

67095-1-Ig

Concentration:

1000 ug/ml

Source:

Mouse

Isotype:

IgG1

Immunogen Catalog Number:

AG28523

GenBank Accession Number:

BC000734

GeneID (NCBI):

3646

UNIPROT ID:

P60228

Full Name:

eukaryotic translation initiation factor 3, subunit E

Calculated MW:

48 kDa

Observed MW:

48-52 kDa

Purification Method:

Protein G purification

CloneNo.:

1C6C8

Recommended Dilutions:

WB 1:20000-1:100000

IP 0.5-4.0 ug for 1.0-3.0 mg of total protein lysate

IF/ICC 1:500-1:2000

## Applications

Tested Applications:

WB, IF/ICC, IP, ELISA

Cited Applications:

RIP

Species Specificity:

human, mouse, rat

Cited Species:

human

Positive Controls:

WB : U2OS cells, LNCaP cells, HeLa cells, HEK-293 cells, Jurkat cells, K-562 cells, HSC-T6 cells, NIH/3T3 cells, 4T1 cells

IP : HeLa cells,

IF/ICC : HepG2 cells,

## Background Information

### Notable Publications

Author	Pubmed ID	Journal	Application
Min Fu	38657100	Cancer Res	RIP

## Storage

Storage:

Store at -20°C. Stable for one year after shipment.

Storage Buffer:

PBS with 0.02% sodium azide and 50% glycerol, pH7.3

Aliquoting is unnecessary for -20°C storage

For technical support and original validation data for this product please contact:

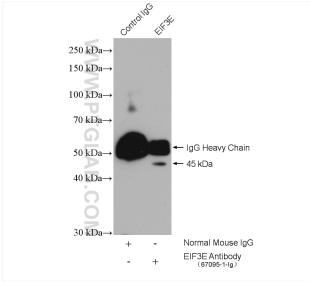
T: 4006900926

E: Proteintech-CN@ptglab.com

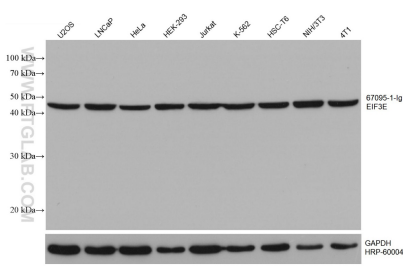
W: ptgcn.com

This product is exclusively available under Proteintech Group brand and is not available to purchase from any other manufacturer.

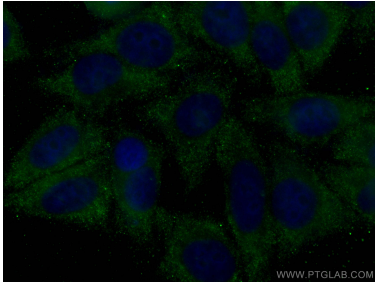
Selected Validation Data



IP result of anti-EIF3E (IP:67095-1-Ig, 5ug; Detection:67095-1-Ig 1:2000) with HeLa cells lysate 1600 ug.



Various lysates were subjected to SDS PAGE followed by western blot with 67095-1-Ig (EIF3E antibody) at dilution of 1:50000 incubated at room temperature for 1.5 hours. The membrane was stripped and reblotted with HRP-conjugated GAPDH Monoclonal antibody (HRP-60004) as loading control.



Immunofluorescent analysis of (-20°C Ethanol) fixed HepG2 cells using EIF3E antibody (67095-1-Ig, Clone: 1C6C8 ) at dilution of 1:1000 and CoraLite®488-Conjugated AffiniPure Goat Anti-Mouse IgG(H+L) (SA00013-1).