

RALB Monoclonal antibody

Catalog Number: 67094-1-Ig 2 Publications

Basic Information

Catalog Number: 67094-1-Ig	GenBank Accession Number: BC018163	Purification Method: Protein A purification
Size: 2200 µg/ml	GeneID (NCBI): 5899	CloneNo.: 1D11C11
Source: Mouse	UNIPROT ID: P11234	Recommended Dilutions: WB 1:5000-1:50000 IHC 1:500-1:2000 IF-P 1:400-1:1600
Isotype: IgG2a	Full Name: v-ral simian leukemia viral oncogene homolog B (ras related; GTP binding protein)	Affinity: $K_D = 1.82 \times 10^{-10}$ $K_{off} = 2.54 \times 10^{-6}$ $K_{on} = 1.40 \times 10^4$
Immunogen Catalog Number: AG28600	Calculated MW: 206 aa, 23 kDa Observed MW: 24 kDa	

Applications

Tested Applications: IF-P, IHC, WB, ELISA	Positive Controls:
Cited Applications: IF, IHC	WB : HeLa cells, rat brain tissue, mouse brain tissue, MCF-7 cells, HepG2 cells, Jurkat cells, Pig brain cells
Species Specificity: Human, rat, pig, mouse	IHC : mouse bladder tissue, human lung cancer tissue, mouse liver tissue, mouse lung tissue, mouse placenta tissue
Cited Species: human	IF-P : human lung cancer tissue,
Note-IHC: suggested antigen retrieval with TE buffer pH 9.0; (*) Alternatively, antigen retrieval may be performed with citrate buffer pH 6.0	

Background Information

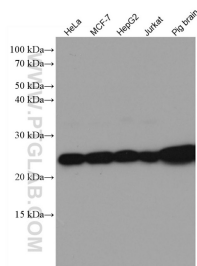
Notable Publications

Author	Pubmed ID	Journal	Application
Claire Leist Hinsch	38136383	Cancers (Basel)	IF
Bohyun Kim	37797754	Hum Pathol	IHC

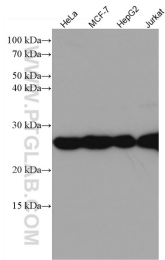
Storage

Storage:
Store at -20°C.
Storage Buffer:
PBS with 0.02% sodium azide and 50% glycerol pH 7.3.
Aliquoting is unnecessary for -20°C storage

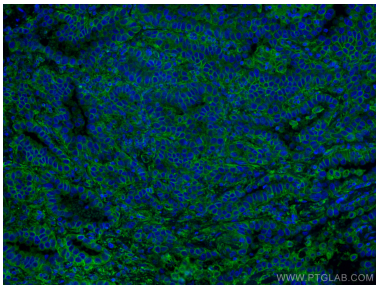
Selected Validation Data



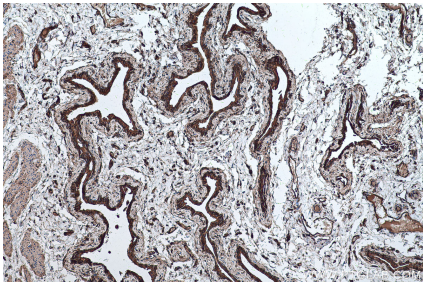
Various lysates were subjected to SDS PAGE followed by western blot with 67094-1-Ig (RALB antibody) at dilution of 1:3000 incubated at room temperature for 1.5 hours.



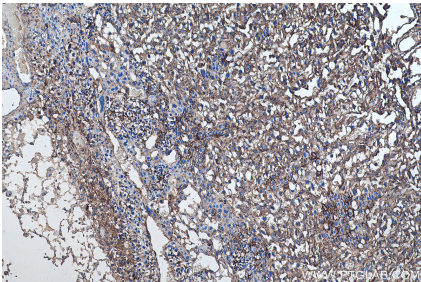
Various lysates were subjected to SDS PAGE followed by western blot with 67094-1-Ig (RALB antibody) at dilution of 1:10000 incubated at room temperature for 1.5 hours.



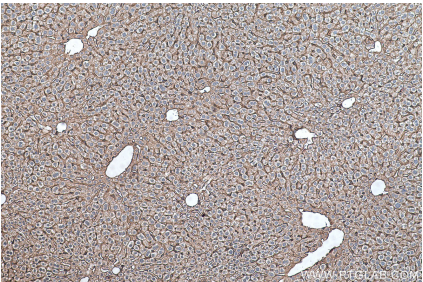
Immunofluorescent analysis of (4% PFA) fixed human lung cancer tissue using RALB antibody (67094-1-Ig, Clone: 1D11C11) at dilution of 1:800 and CoraLite®488-Conjugated AffiniPure Goat Anti-Mouse IgG(H+L).



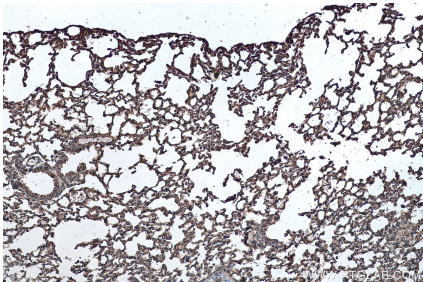
Immunohistochemical analysis of paraffin-embedded mouse bladder tissue slide using 67094-1-Ig (RALB antibody) at dilution of 1:1000 (under 10x lens). Heat mediated antigen retrieval with Tris-EDTA buffer (pH 9.0).



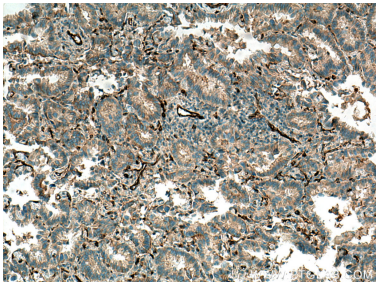
Immunohistochemical analysis of paraffin-embedded mouse placenta tissue slide using 67094-1-Ig (RALB antibody) at dilution of 1:1000 (under 10x lens). Heat mediated antigen retrieval with Tris-EDTA buffer (pH 9.0).



Immunohistochemical analysis of paraffin-embedded mouse liver tissue slide using 67094-1-Ig (RALB antibody) at dilution of 1:1000 (under 10x lens). Heat mediated antigen retrieval with Tris-EDTA buffer (pH 9.0).



Immunohistochemical analysis of paraffin-embedded mouse lung tissue slide using 67094-1-Ig (RALB antibody) at dilution of 1:1000 (under 10x lens). Heat mediated antigen retrieval with Tris-EDTA buffer (pH 9.0).



Immunohistochemical analysis of paraffin-embedded human lung cancer tissue slide using 67094-1-Ig (RALB antibody) at dilution of 1:1000 (under 10x lens). Heat mediated antigen retrieval with Tris-EDTA buffer (pH 9.0).