

For Research Use Only

# RALA Monoclonal antibody

Catalog Number: 67093-1-Ig

Featured Product

1 Publications



## Basic Information

Catalog Number:

67093-1-Ig

Size:

2200 µg/ml

Source:

Mouse

Isotype:

IgG2a

Immunogen Catalog Number:

AG5329

GenBank Accession Number:

BC039858

GeneID (NCBI):

5898

UNIPROT ID:

P11233

Full Name:

v-ral simian leukemia viral oncogene homolog A (ras related)

Calculated MW:

206 aa, 24 kDa

Observed MW:

24 kDa

Purification Method:

Protein A purification

CloneNo.:

1H9H5

Recommended Dilutions:

WB 1:5000-1:50000

IHC 1:500-1:2000

## Applications

Tested Applications:

FC, IHC, WB, ELISA

Cited Applications:

IF

Species Specificity:

Human, pig

Cited Species:

human

**Note-IHC: suggested antigen retrieval with TE buffer pH 9.0; (\*) Alternatively, antigen retrieval may be performed with citrate buffer pH 6.0**

Positive Controls:

WB : HeLa cells, pig brain tissue, MCF-7 cells, HepG2 cells, Jurkat cells, rat brain tissue, mouse brain tissue

IHC : human breast cancer tissue,

## Background Information

### Notable Publications

Author	Pubmed ID	Journal	Application
Claire Leist Hinsch	38136383	Cancers (Basel)	IF

## Storage

Storage:

Store at -20°C. Stable for one year after shipment.

Storage Buffer:

PBS with 0.02% sodium azide and 50% glycerol pH 7.3.

Aliquoting is unnecessary for -20°C storage

For technical support and original validation data for this product please contact:

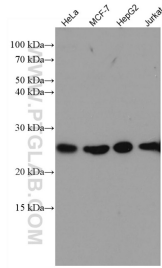
T: 4006900926

E: [Proteintech-CN@ptglab.com](mailto:Proteintech-CN@ptglab.com)

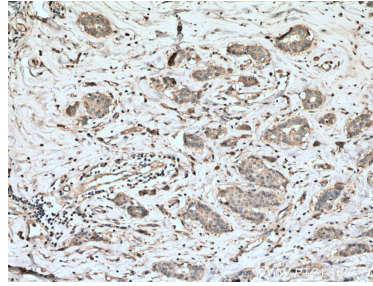
W: [ptgcn.com](http://ptgcn.com)

**This product is exclusively available under Proteintech Group brand and is not available to purchase from any other manufacturer.**

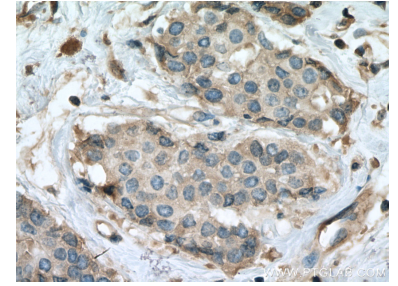
## Selected Validation Data



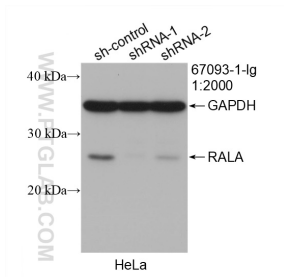
Various lysates were subjected to SDS PAGE followed by western blot with 67093-1-Ig (RALA antibody) at dilution of 1:10000 incubated at room temperature for 1.5 hours.



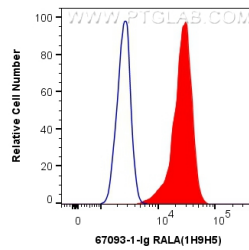
Immunohistochemical analysis of paraffin-embedded human breast cancer tissue slide using 67093-1-Ig (RALA antibody) at dilution of 1:1000 (under 10x lens). Heat mediated antigen retrieval with Tris-EDTA buffer (pH 9.0).



Immunohistochemical analysis of paraffin-embedded human breast cancer tissue slide using 67093-1-Ig (RALA antibody) at dilution of 1:1000 (under 40x lens). Heat mediated antigen retrieval with Tris-EDTA buffer (pH 9.0).



WB result of RALA antibody (67093-1-Ig; 1:400; incubated at room temperature for 1.5 hours) with sh-Control and sh-RALA transfected HeLa cells.



$1 \times 10^6$  MCF-7 cells were intracellularly stained with 0.4 ug Anti-Human RALA (67093-1-Ig, Clone:1H9H5) and CoraLite@488-Conjugated AffiniPure Goat Anti-Mouse IgG(H+L) at dilution 1:1000 (red), or 0.4 ug Mouse IgG2a Isotype Control (C1.18.4) (65208-1-Ig, Clone: C1.18.4) (blue). Cells were fixed with 4% PFA and permeabilized with Flow Cytometry Perm Buffer (PF00011-C).