

For Research Use Only

SDC2 Monoclonal antibody

Catalog Number: 67088-1-Ig **7 Publications**



Basic Information

Catalog Number: 67088-1-Ig	GenBank Accession Number: BC049836	Purification Method: Protein A purification
Size: 2557 µg/ml	GeneID (NCBI): 6383	CloneNo.: 3A7B2
Source: Mouse	UNIPROT ID: P34741	Recommended Dilutions: WB 1:2000-1:10000 IHC 1:250-1:1000
Isotype: IgG2a	Full Name: syndecan 2	
Immunogen Catalog Number: AG5739	Calculated MW: 22 kDa	
	Observed MW: 19 kDa, 22 and 48 kDa	

Applications

Tested Applications: IHC, WB, ELISA	Positive Controls: WB : L02 cells, HuH-7 cells, HepG2 cells, A549 cells, NCI-H1299 cells, Jurkat cells
Cited Applications: WB, IF, IHC	IHC : human liver cancer tissue, human colon cancer tissue, human prostate cancer tissue
Species Specificity: Human	
Cited Species: human, pig	
Note-IHC: suggested antigen retrieval with TE buffer pH 9.0; (*) Alternatively, antigen retrieval may be performed with citrate buffer pH 6.0	

Background Information

SDC2, containing cell surface heparan sulphate proteoglycan, functions as an integral membrane protein and participates in cell proliferation, cell migration, cell adhesion and signal transduction. It has been reported that the expression level of SDC2 will be up-regulated under hypoxia condition which can induce increased release of cytokines and chemokines. Besides, methylated SDC2 can be used as a potential biomarker for early diagnosis of colon cancer. 67088-1-Ig antibody detects the 19 and 22 kDa SDC2 isoforms as well as the 48 kDa dimeric protein in SDS-PAGE. (PMID: 18803305, 23297089, 30022330, 29945573)

Notable Publications

Author	Pubmed ID	Journal	Application
Ningye Ma	32902825	Cell Oncol (Dordr)	WB
Sheng-Nan Yang	35320391	Heart Vessels	WB
Małgorzata Grabowska	35702951	J Cell Mol Med	WB

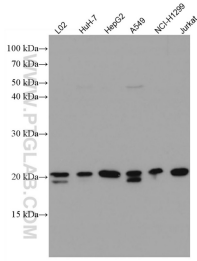
Storage

Storage:
Store at -20°C. Stable for one year after shipment.
Storage Buffer:
PBS with 0.02% sodium azide and 50% glycerol pH 7.3.
Aliquoting is unnecessary for -20°C storage

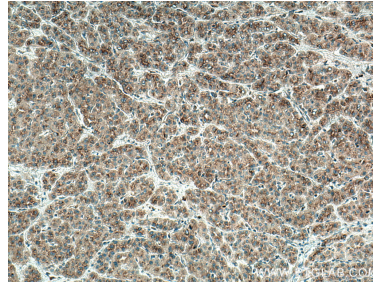
For technical support and original validation data for this product please contact:
T: 4006900926 E: Proteintech-CN@ptglab.com W: ptgcn.com

This product is exclusively available under Proteintech Group brand and is not available to purchase from any other manufacturer.

Selected Validation Data



Various lysates were subjected to SDS PAGE followed by western blot with 67088-1-Ig (SDC2 antibody) at dilution of 1:5000 incubated at room temperature for 1.5 hours.



Immunohistochemical analysis of paraffin-embedded human liver cancer tissue slide using 67088-1-Ig (SDC2 antibody) at dilution of 1:500 (under 10x lens. Heat mediated antigen retrieval with Tris-EDTA buffer (pH 9.0).