

For Research Use Only

BCAS3 Monoclonal antibody, PBS Only (Detector)

Catalog Number: 67085-1-PBS



Basic Information

Catalog Number: 67085-1-PBS	GenBank Accession Number: BC001250	Purification Method: Protein A purification
Source: Mouse	GeneID (NCBI): 54828	CloneNo.: 1G7B1
Isotype: IgG1	UNIPROT ID: Q9H6U6	
Immunogen Catalog Number: AG28545	Full Name: breast carcinoma amplified sequence 3	
	Calculated MW: 99 kDa	
	Observed MW: 100 kDa	

Applications

Tested Applications:
WB, Cytometric bead array, Indirect ELISA

Species Specificity:
human, mouse, rat, pig

Background Information

Rudhira/BCAS3 (Breast Cancer Amplified Sequence 3) is a conserved protein expressed in the embryonic vasculature and malignant tumors. Rudhira is a predicted WD40 domain protein. During mouse development Rudhira is expressed in erythropoietic and angiogenic precursors but not in their differentiated progeny. This transient expression of Rudhira is also seen in normal adult angiogenesis. BCAS3, the human ortholog of Rudhira is 98% identical and the gene maps to a breakpoint of hematological neoplasms on chromosome 17q23.1. BCAS3 is also expressed in vascular development in embryoid bodies in vitro and was originally identified as a gene over-expressed in breast cancers. It is reported to be a target of metastasis associated protein-1 (MTA-1). Further BCAS3 expression is also upregulated in grade III and IV glioblastomas where it is misexpressed in the tumor cells.

Storage

Storage:
Store at -80°C.

The product is shipped with ice packs. Upon receipt, store it immediately at -80°C

Storage Buffer:
PBS only, pH7.3

For technical support and original validation data for this product please contact:

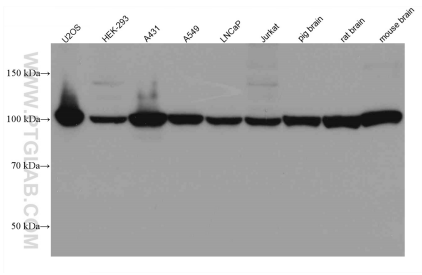
T: 4006900926

E: Proteintech-CN@ptglab.com

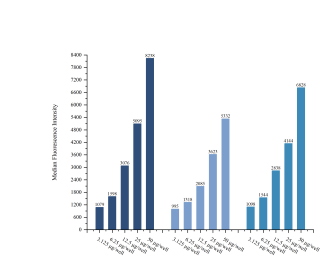
W: ptgcn.com

This product is exclusively available under Proteintech Group brand and is not available to purchase from any other manufacturer.

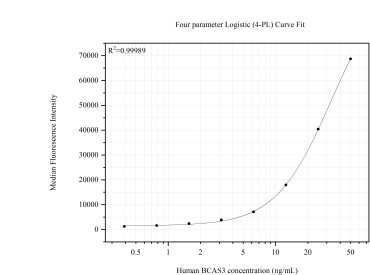
Selected Validation Data



Various lysates were subjected to SDS PAGE followed by western blot with 67085-1-Ig (BCAS3 antibody) at dilution of 1:10000 incubated at room temperature for 1.5 hours. This data was developed using the same antibody clone with 67085-1-PBS in a different storage buffer formulation.



Cytometric bead array sample test of MP51587-1, BCAS3 Monoclonal Matched Antibody Pair, PBS Only. Capture antibody: 67085-2-PBS. Detection antibody: 67085-1-PBS.



Cytometric bead array standard curve of MP51587-1, BCAS3 Monoclonal Matched Antibody Pair, PBS Only. Capture antibody: 67085-2-PBS. Detection antibody: 67085-1-PBS. Standard: Ag28545. Range: 0.391-50 ng/mL.